

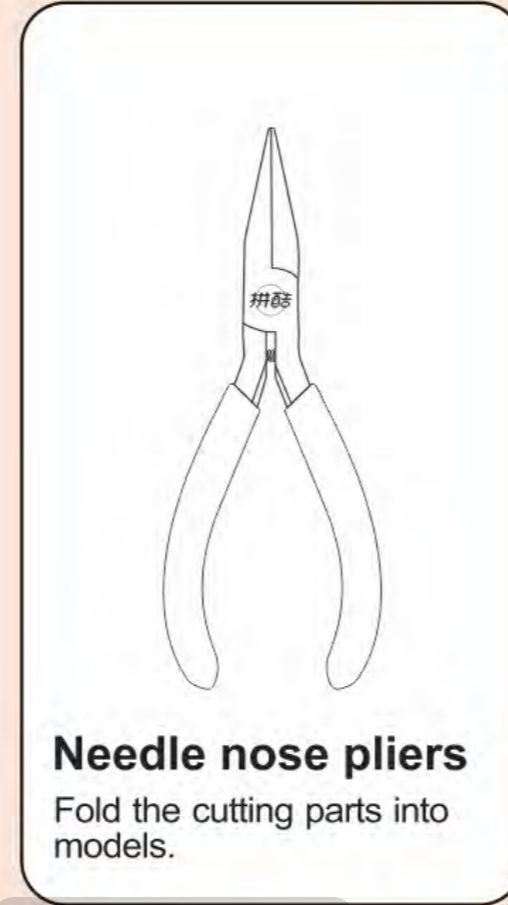
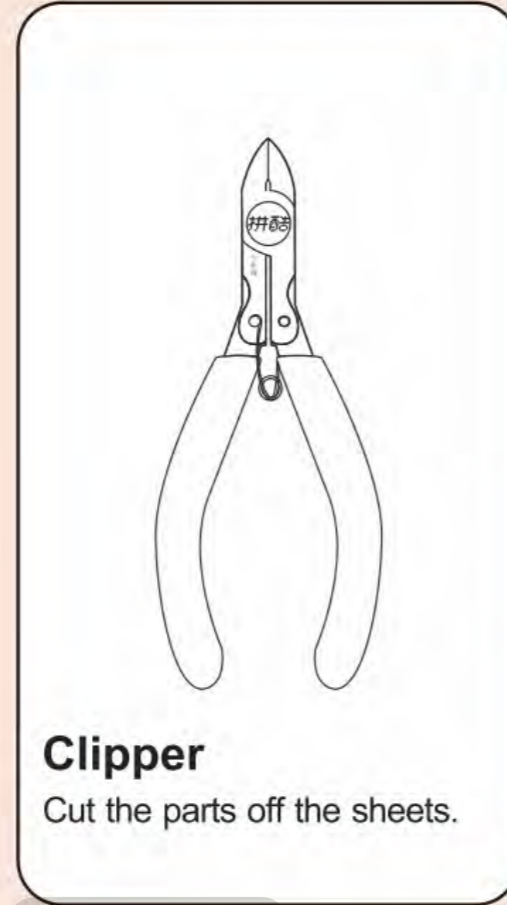
Amethyst Mantis HM015



CP-ASSY-HM015#-A1-20220218

Installation Reminder

- Prepare tools:

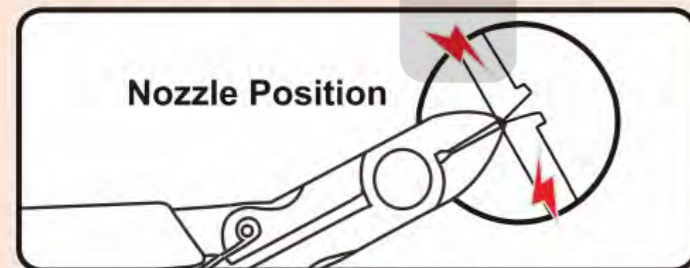


It is recommended to use piececool authentic assembly tools to build or fix the design. It is tailor made for the metal pieces and user friendly.

WARNING – Please handle metal sheets with care. The parts may have sharp edges that could cut or scratch skin. Keep away from children.

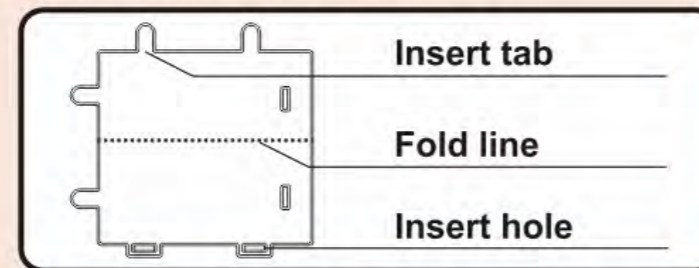
- Installation Method:

a. Remove the parts



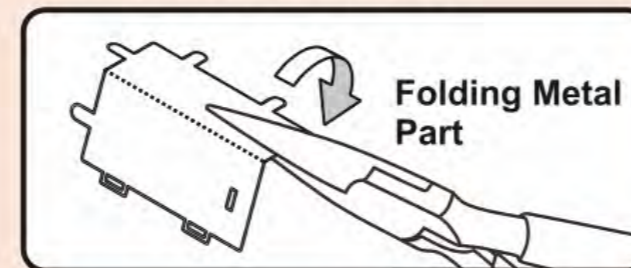
Please use the clipper to cut the nozzle position and remove the parts.

b. Identify the parts



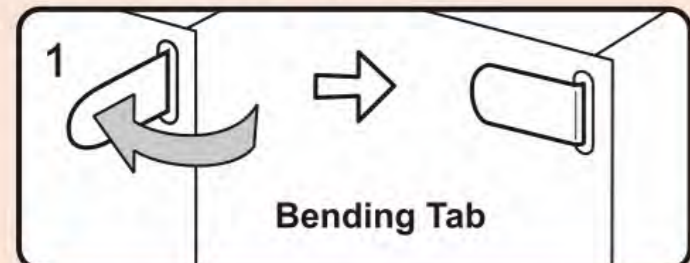
Identify the insert tab, fold line and the insert hole.

c. Folding the parts

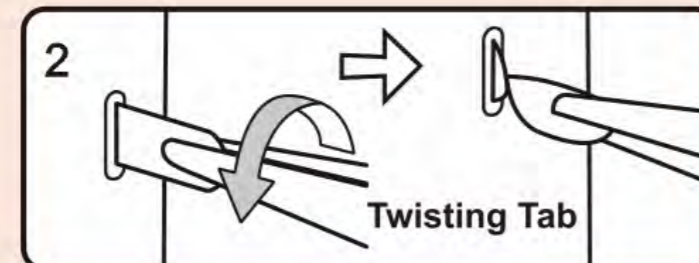


Please use the needle nose pliers to fold the cutting parts into models.

d. Retaining the parts



● Insert the hole, bending tab with angle 90°



▲ Insert the hole, twisting tab with angle 90°

- Attention:

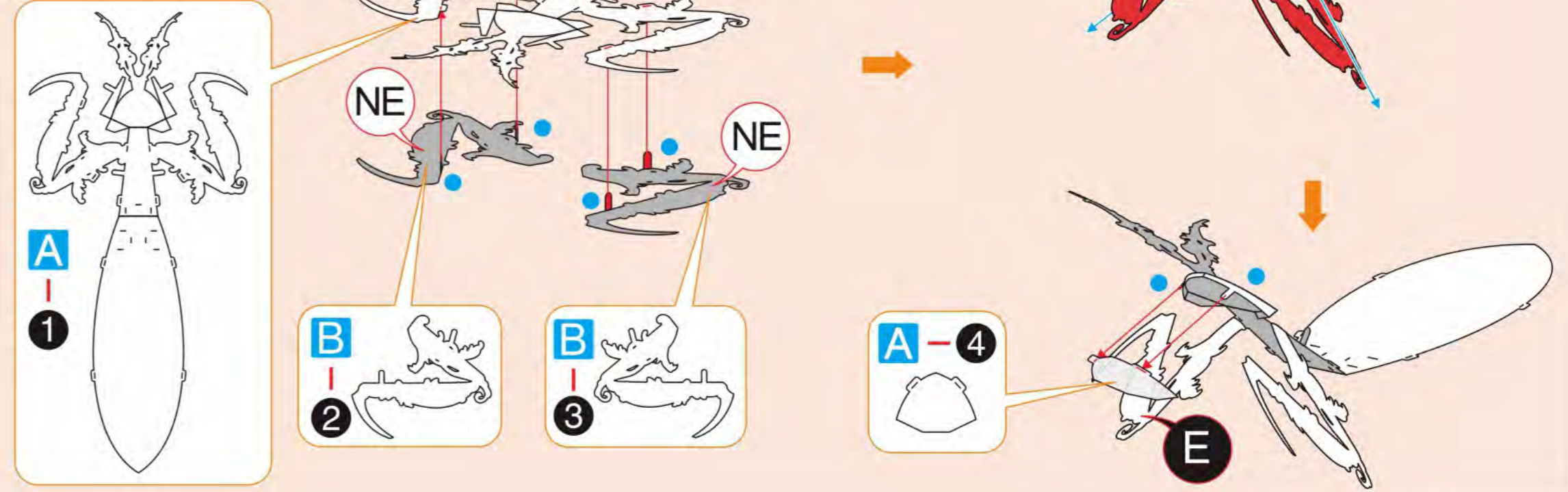
- E** Engraved / Color side
- NE** Non-engraved / Silver side
- !** Attention Point
- ▭** Keep the parts symmetrical

When cutting metal parts, please do not cut the "insert tab" as "nozzle position". Only cut the parts of the current step when cutting the parts. Do not cut all the parts at one time to avoid loss.

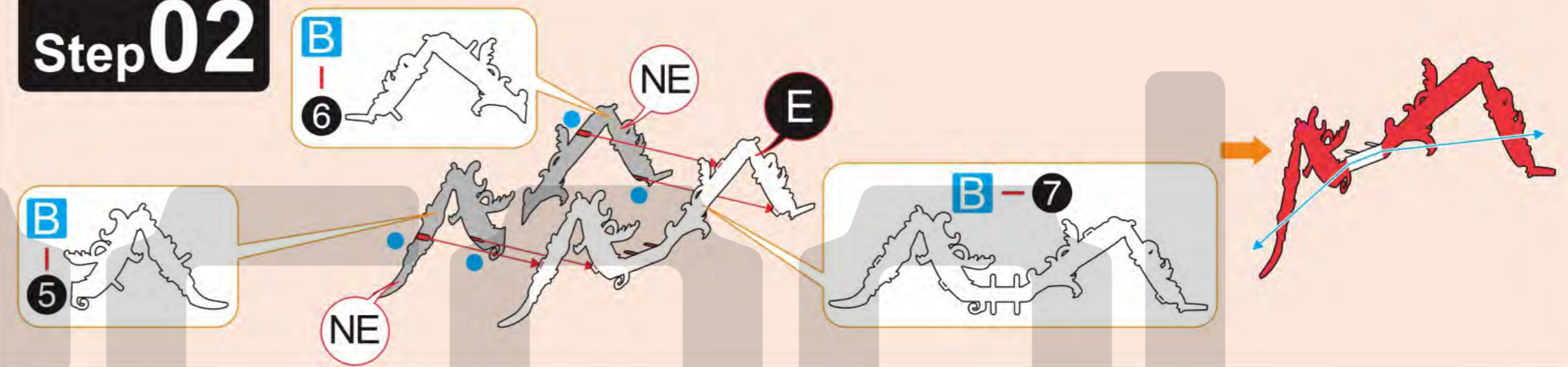
When encountering the parts of the folding line, please pay attention to the front and back of the metal sheet and the direction of the folding. According to the direction indicated in the instruction, cut lightly and fold slowly. It is best to fold it once. Do not fold it repeatedly to avoid damage to the parts.

Assembly Guide

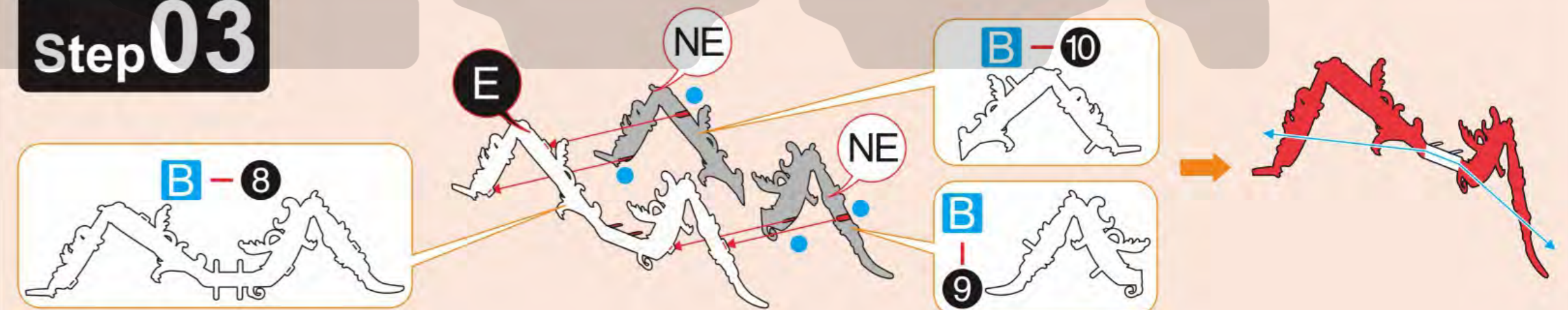
Step01



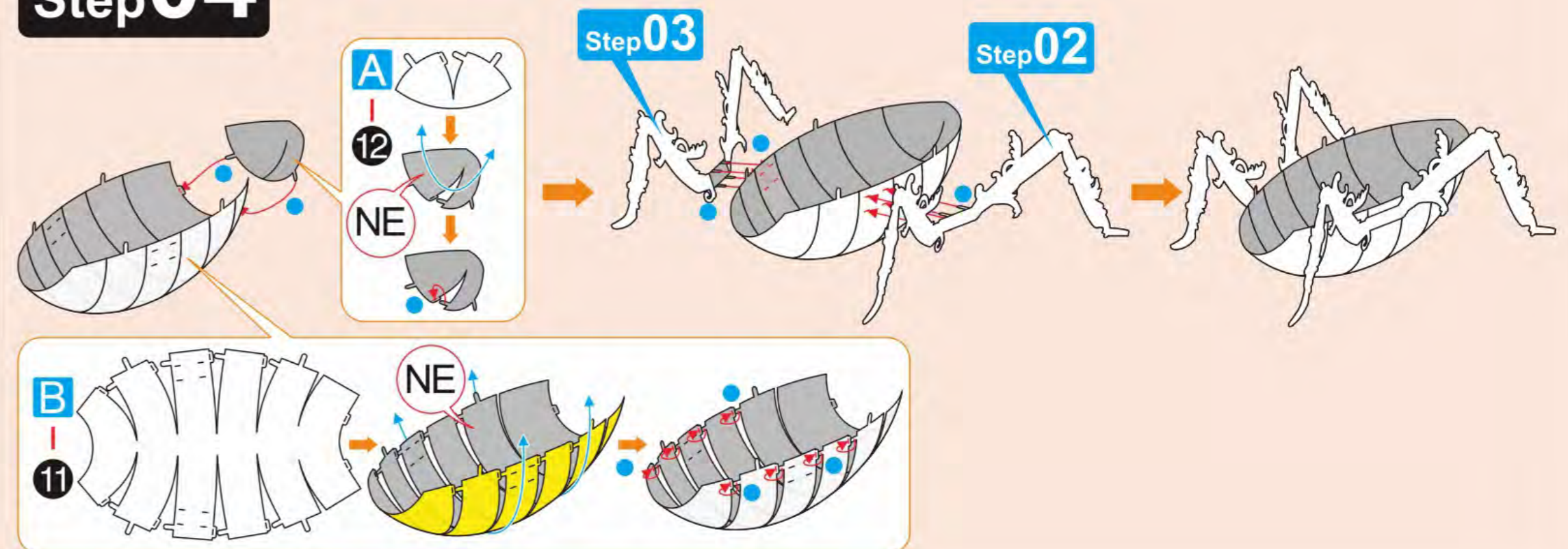
Step02



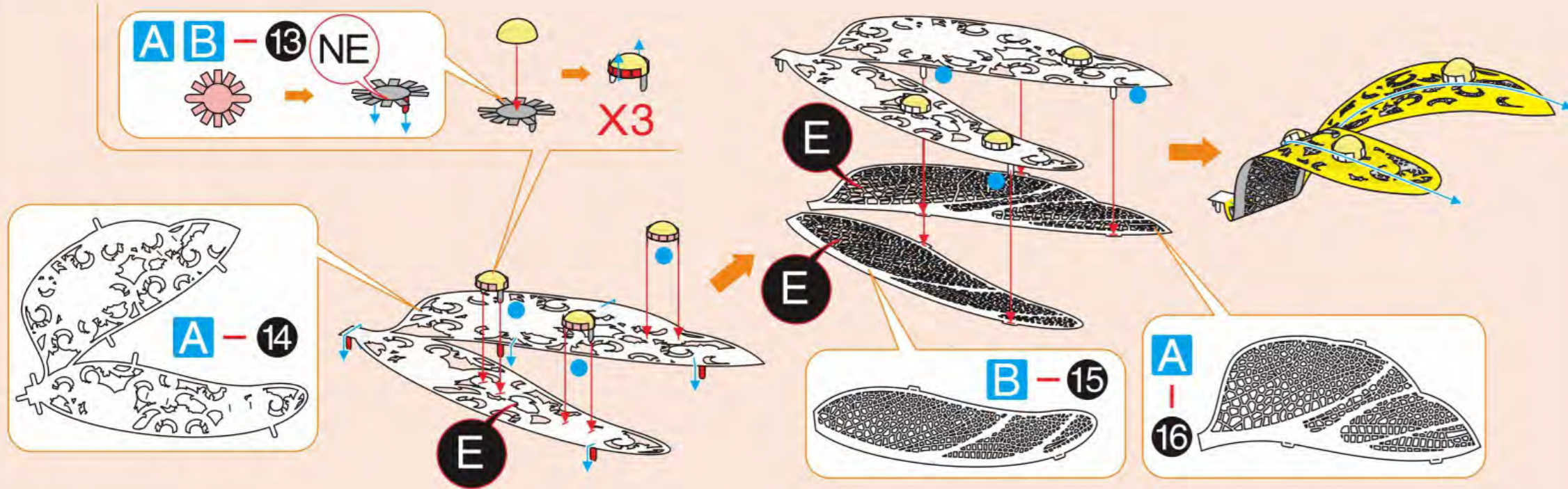
Step03



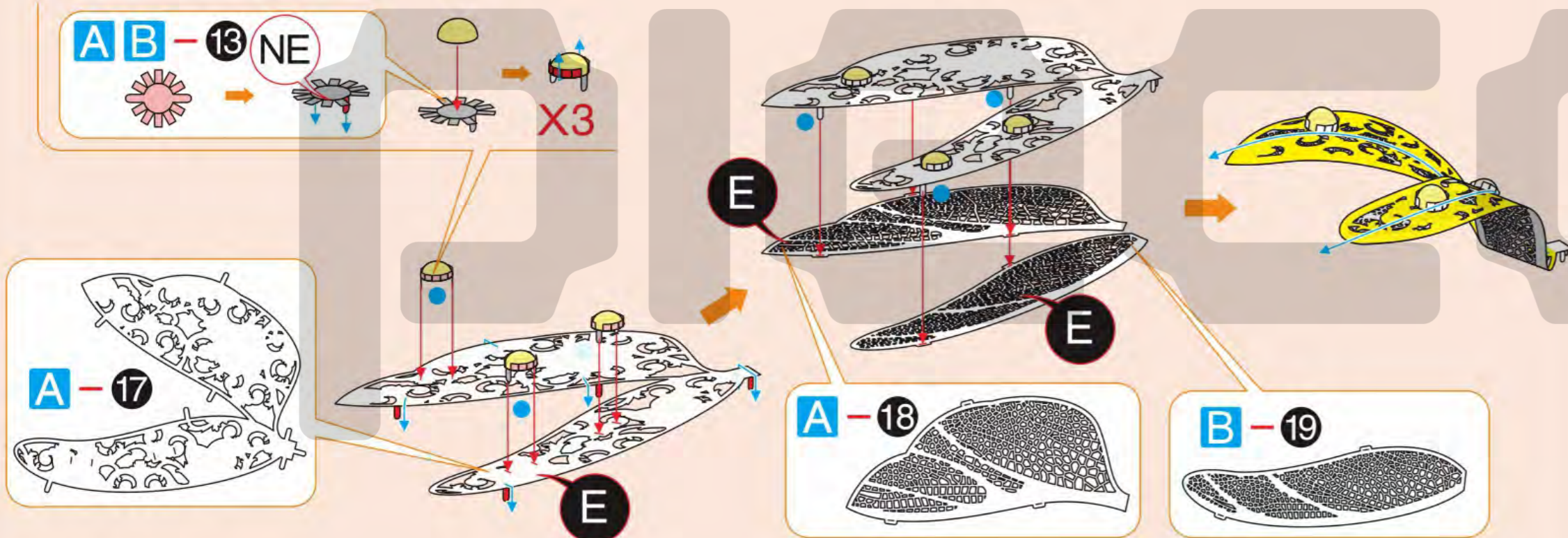
Step04



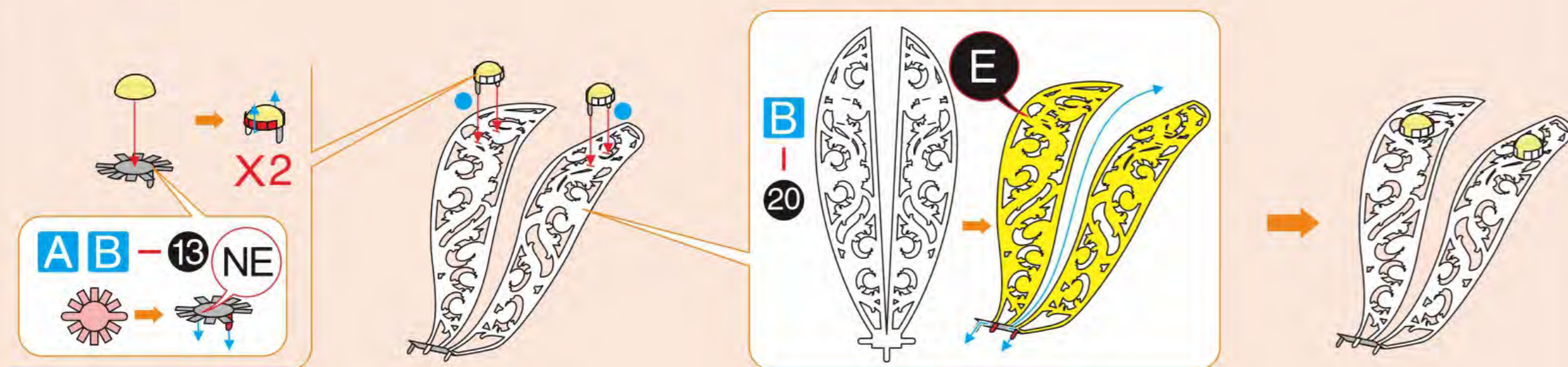
Step05



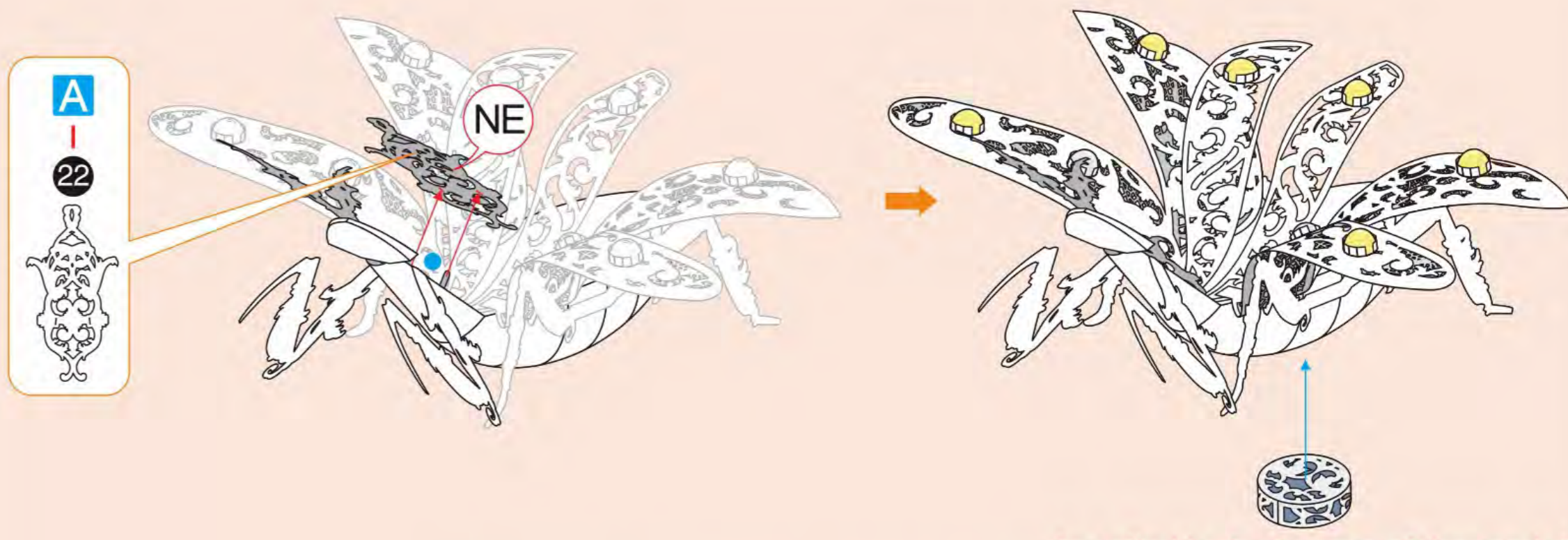
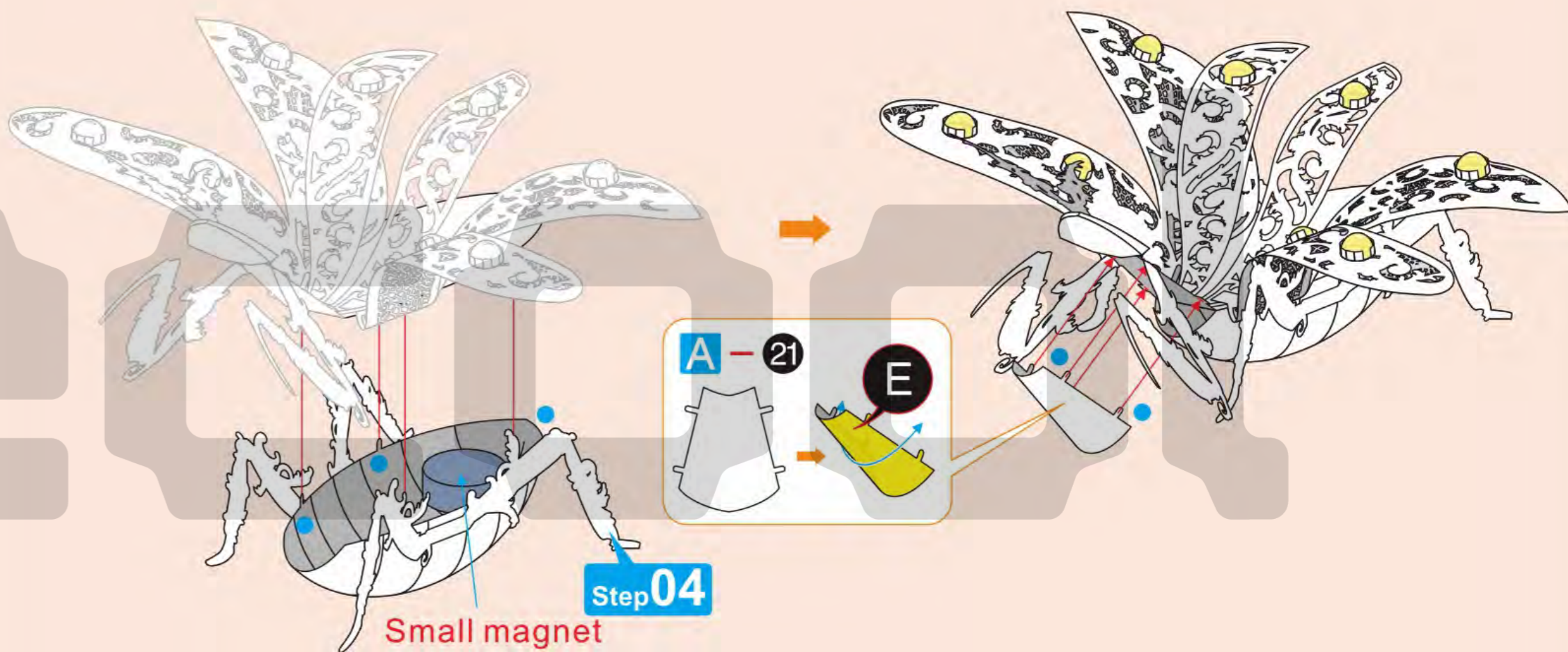
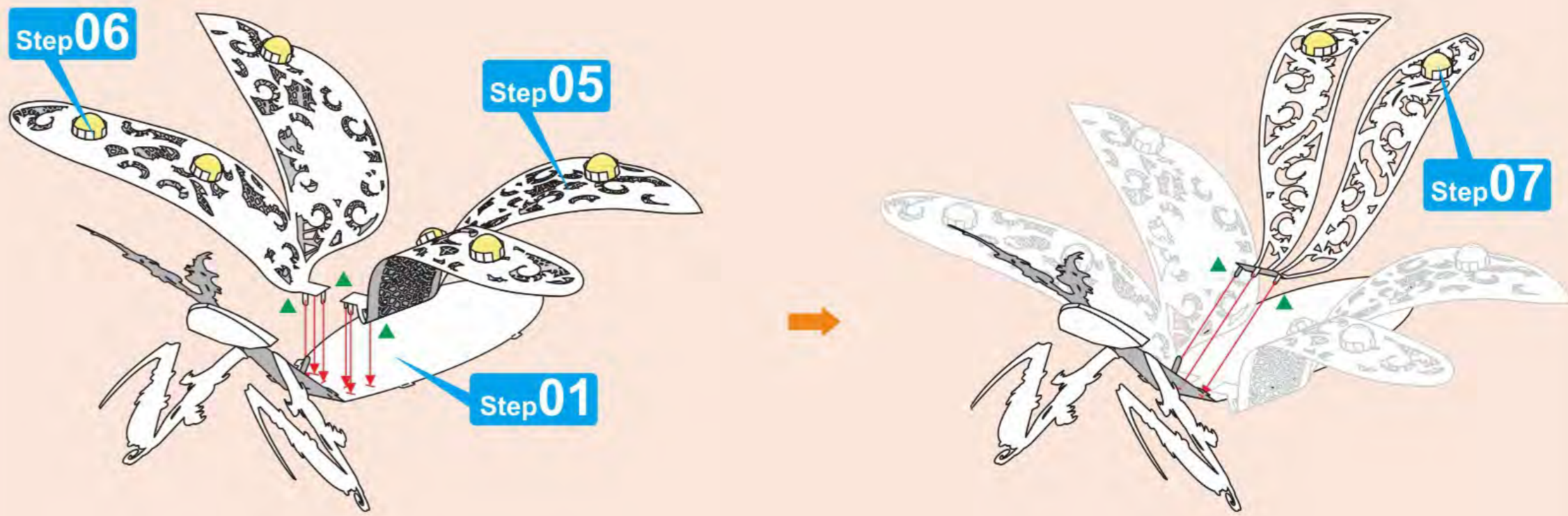
Step06



Step07



Step08



Installed in the bottom of the model.

After installing the magnet, it can be freely attached anywhere as a decoration.

For example: coat brooches, bag accessories, refrigerator stickers, etc.

Attention: Please avoid attaching to electronic devices as magnets can affect normal operation.