

piececool

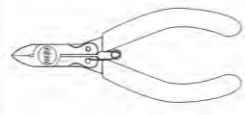
**PEACOCK
HP242**

Assembly Instructions

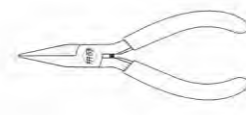
Installation Reminder :

⚠ WARNING – Please handle metal sheets with care. The parts may have sharp edges that could cut or scratch skin. Keep away from children.

● Prepare tools:



Clipper
Cut the parts off the sheets.



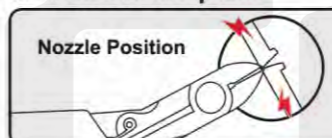
Needle nose pliers
Fold the cutting parts into models.

It is recommended to use piececool authentic assembly tools to build or fix the design. It is tailor made for the metal pieces and user friendly.



● Installation Method:

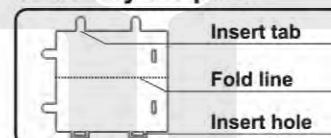
a. Remove the parts



Nozzle Position

Please use the clipper to cut the nozzle position and remove the parts.

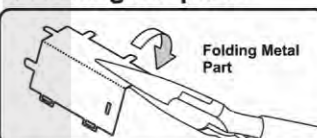
b. Identify the parts



Insert tab
Fold line
Insert hole

Identify the insert tab, fold line and the insert hole.

c. Folding the parts




Folding Metal Part

Please use the Needle nose pliers to fold the cutting parts into models.

d. Retaining the parts


1



Bending Tab

● Insert the hole, bending tab with angle 90°

2



Twisting Tab

▲ Insert the hole, twisting tab with angle 90°

● Attention:

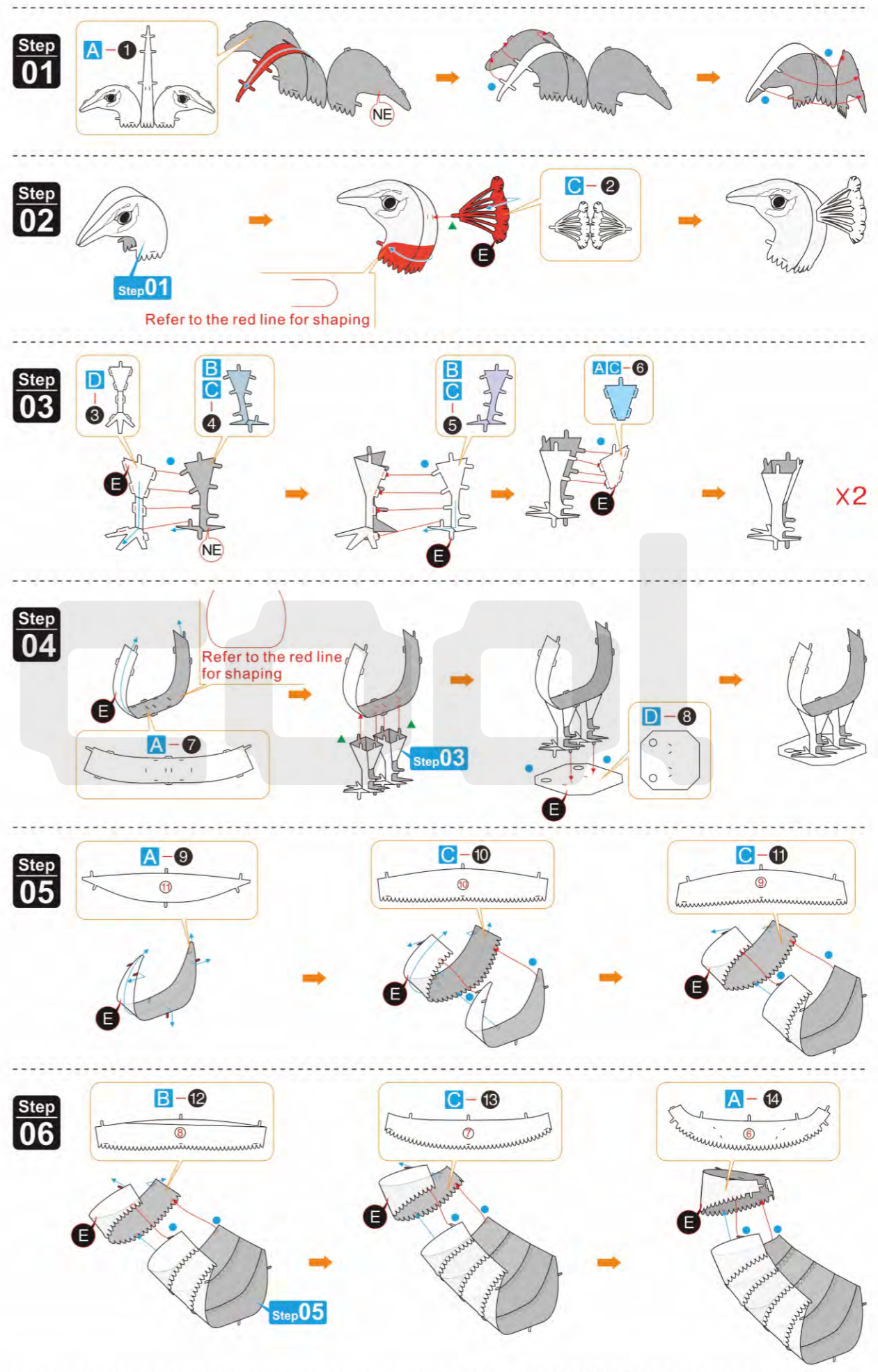
- E** Engraved / Color side
- NE** Non-engraved / Silver side
- !** Attention Point
- Keep the parts symmetrical

When cutting metal parts, please do not cut the "insert tab" as "nozzle position". Only cut the parts of the current step when cutting the parts. Do not cut all the parts at one time to avoid loss.

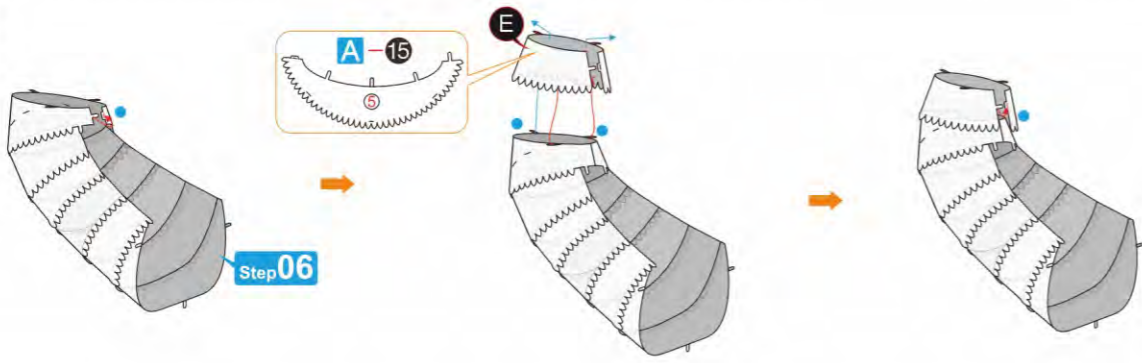
When encountering the parts of the folding line, please pay attention to the front and back of the metal sheet and the direction of the folding. According to the direction indicated in the instruction, cut lightly and fold slowly. It is best to fold it once. Do not fold it repeatedly to avoid damage to the parts.

Assembling steps:

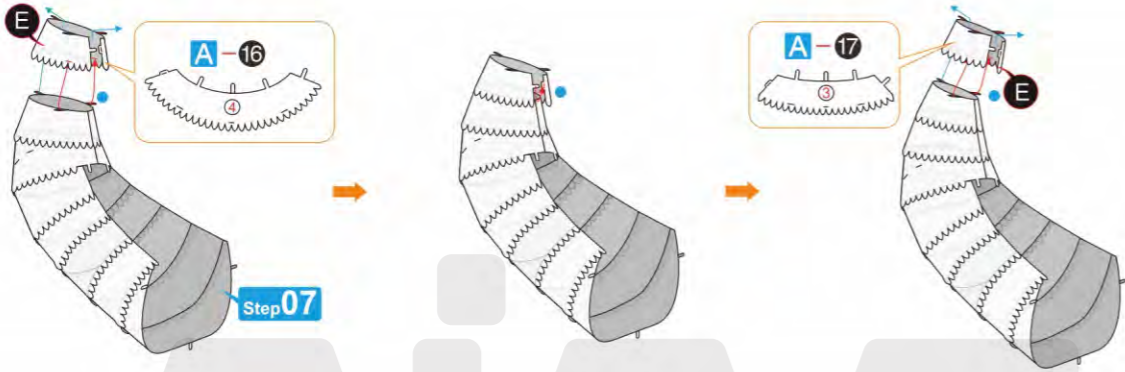
piece



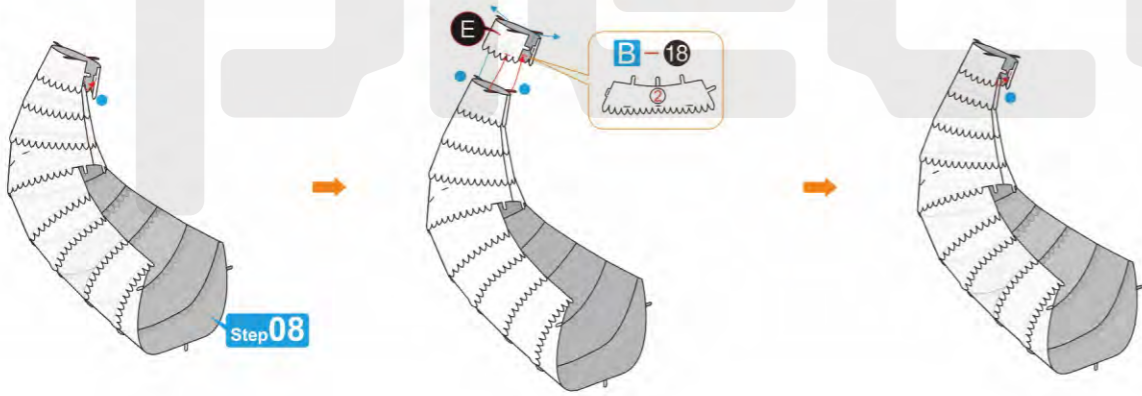
Step 07



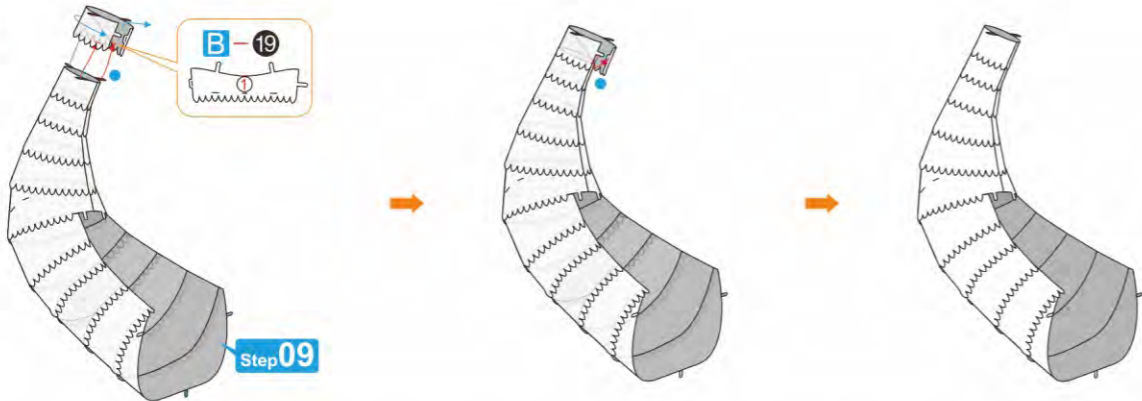
Step 08



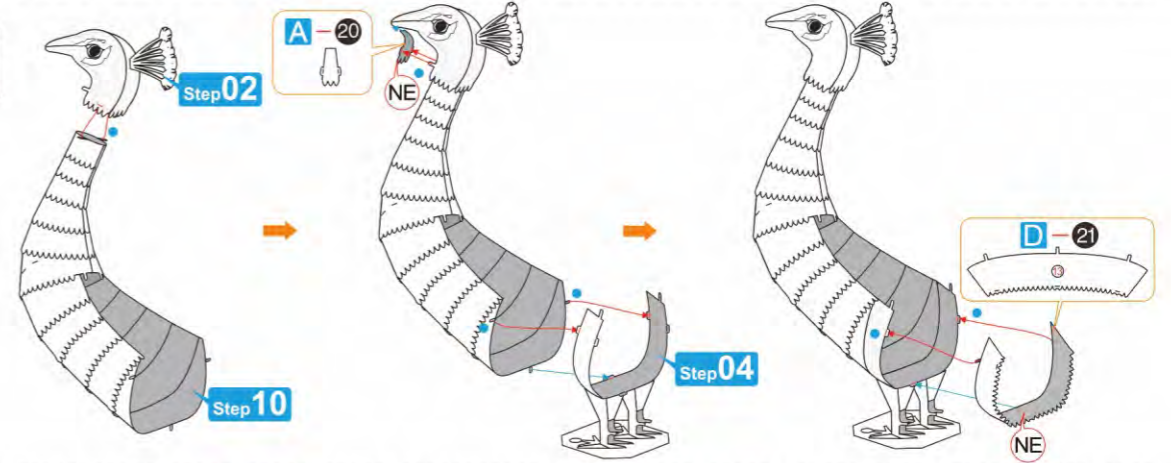
Step 09



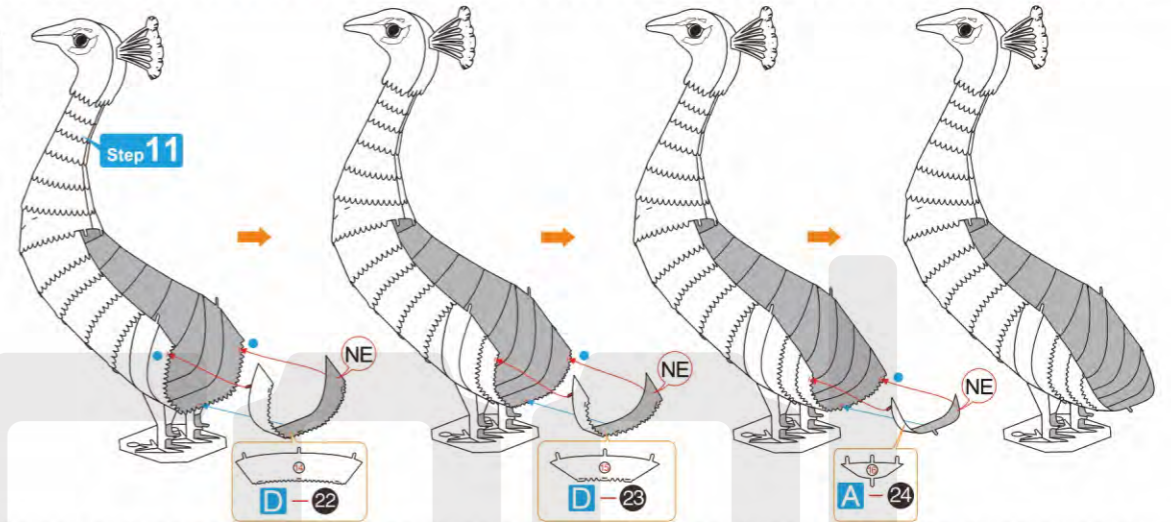
Step 10



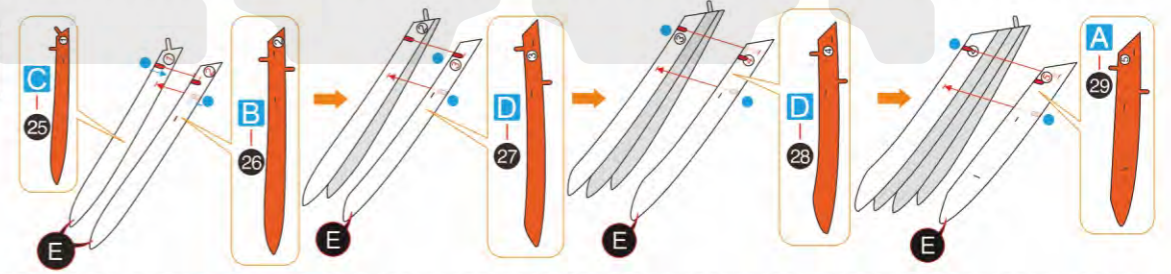
Step 11



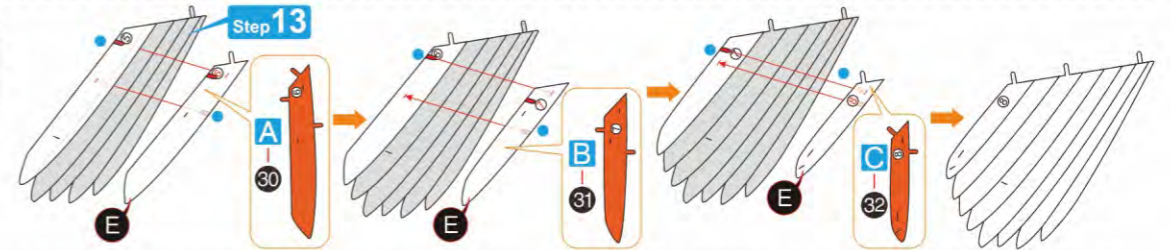
Step 12



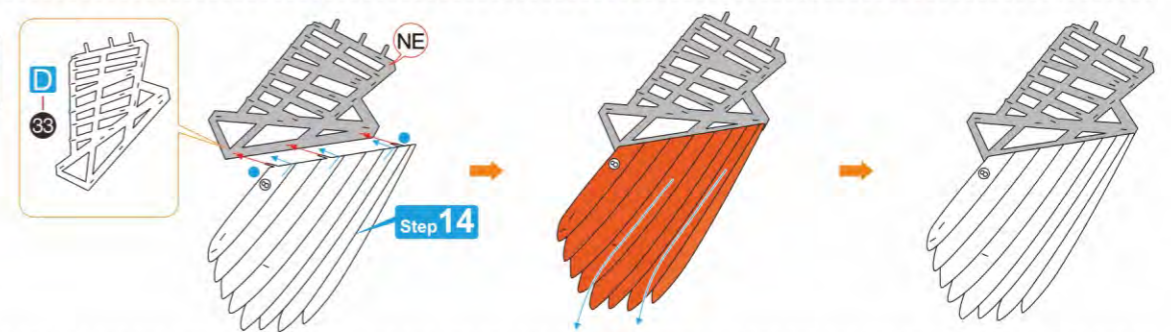
Step 13

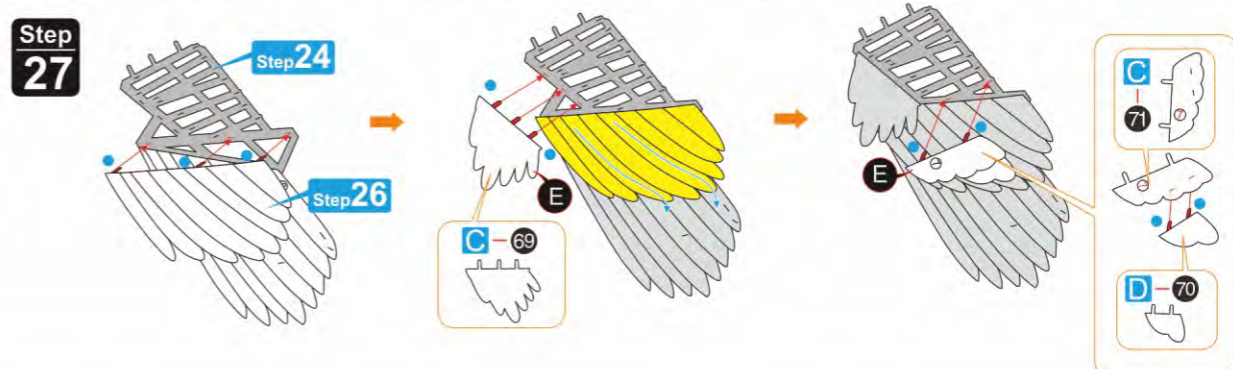
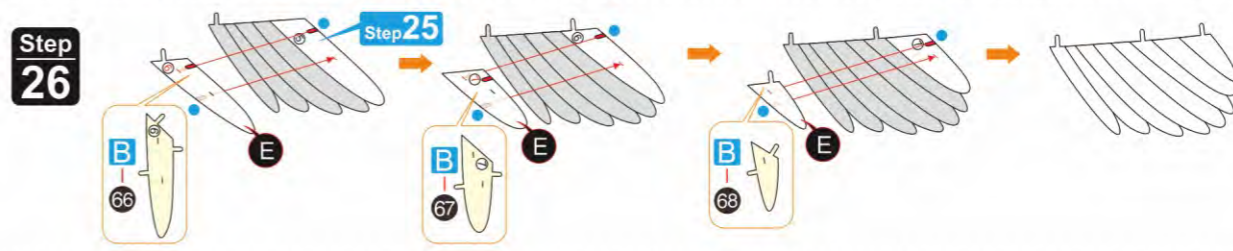
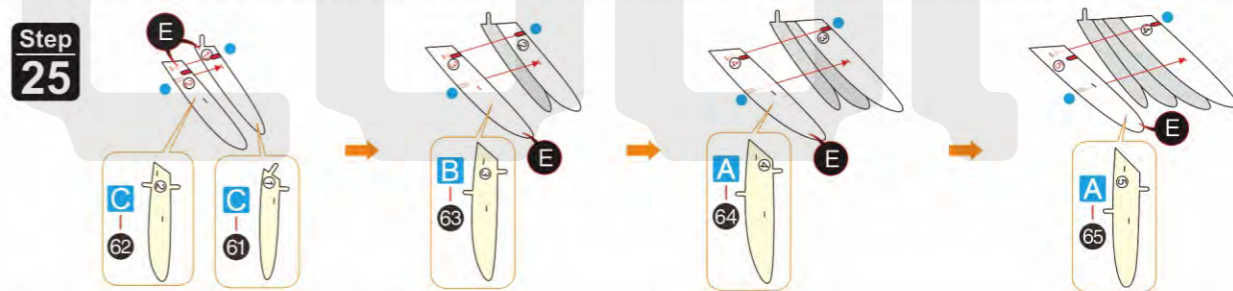
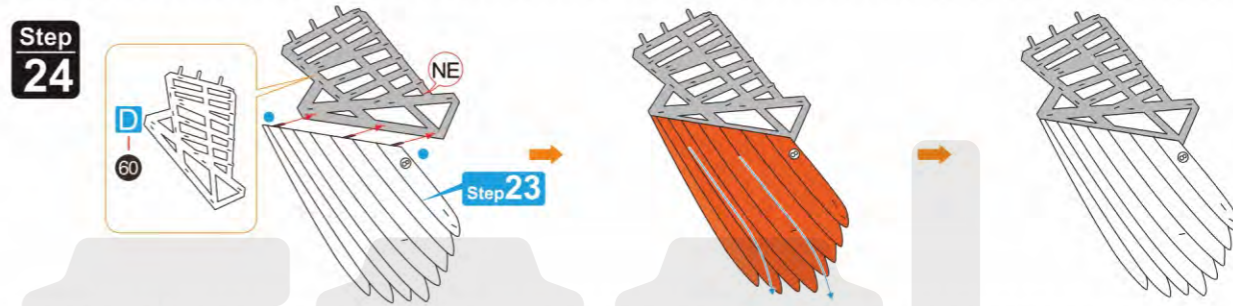
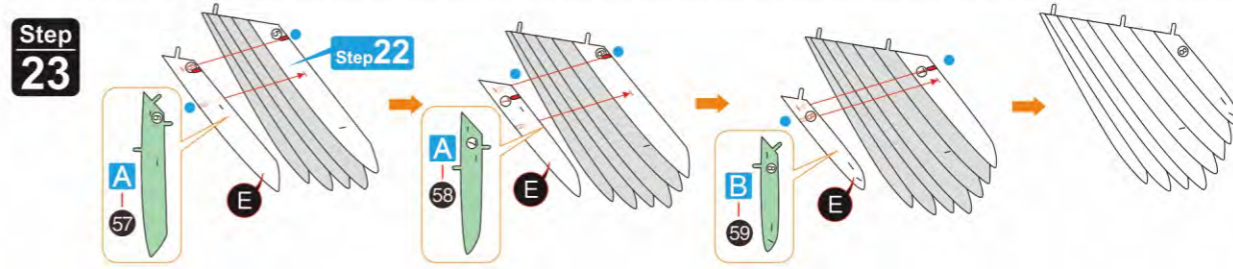
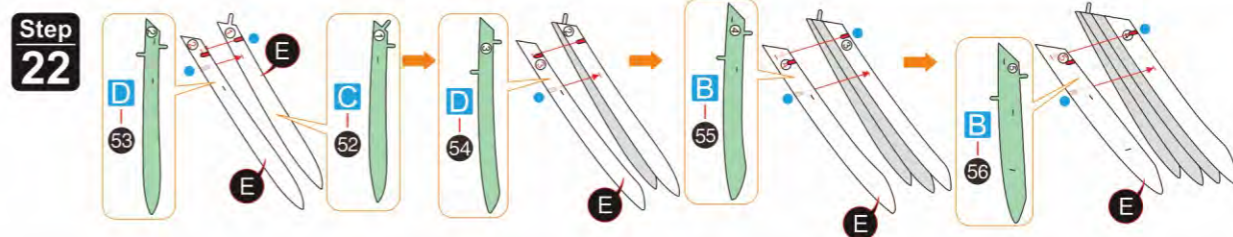
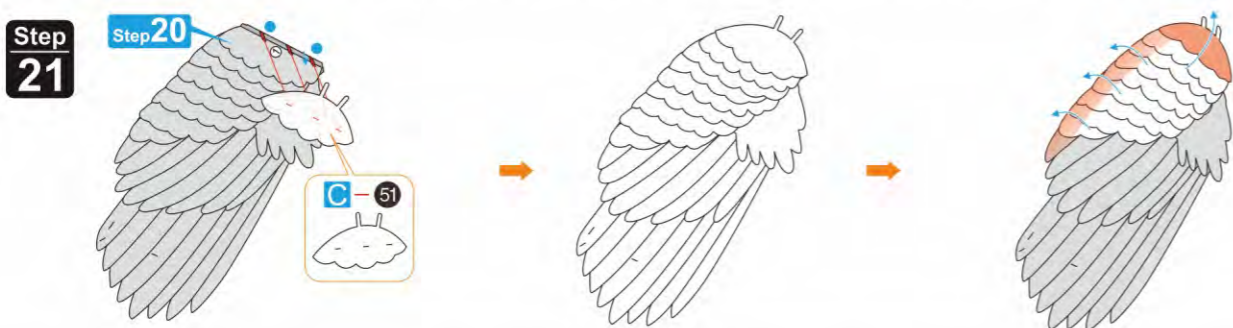
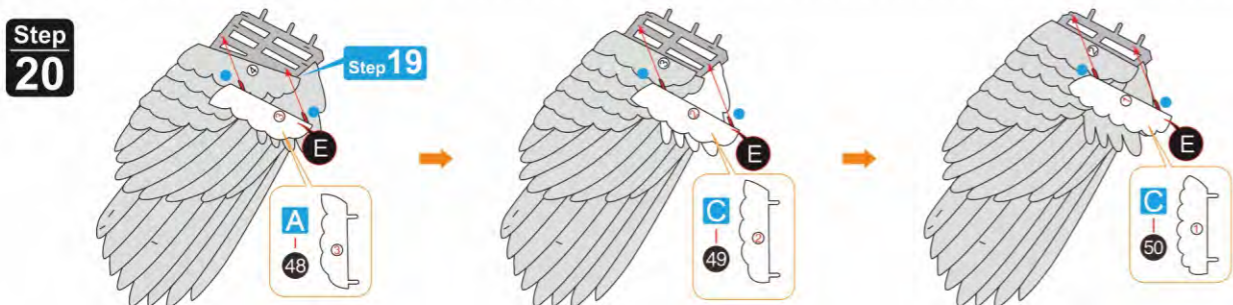
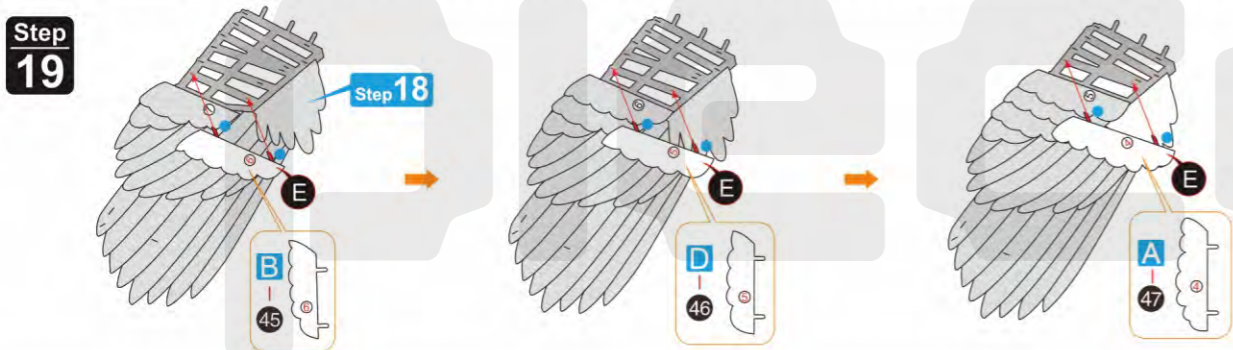
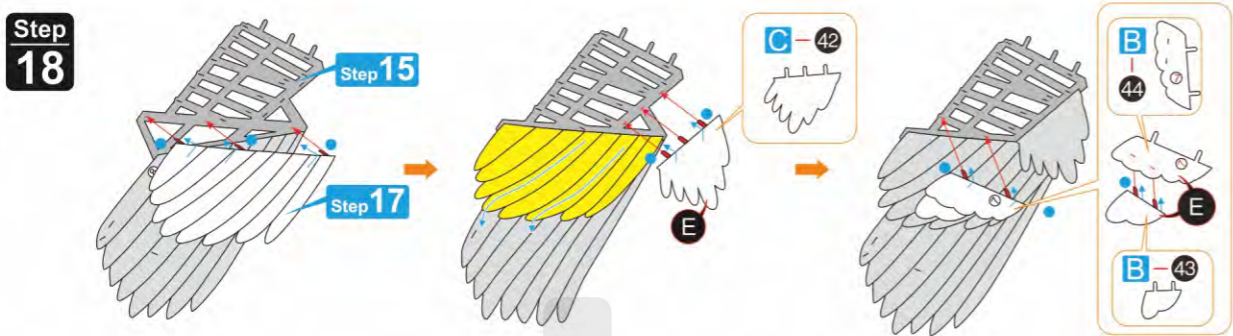
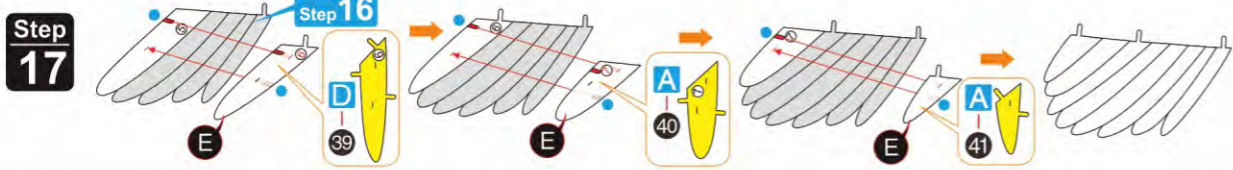
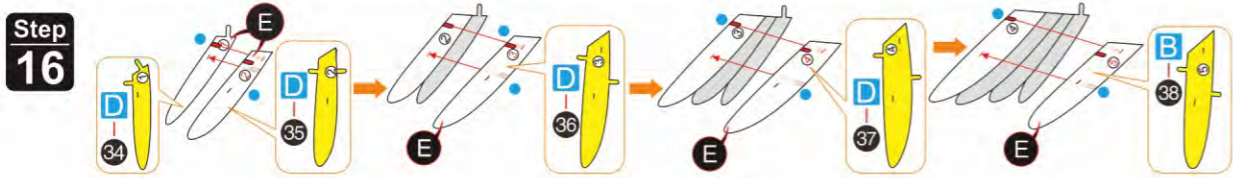


Step 14

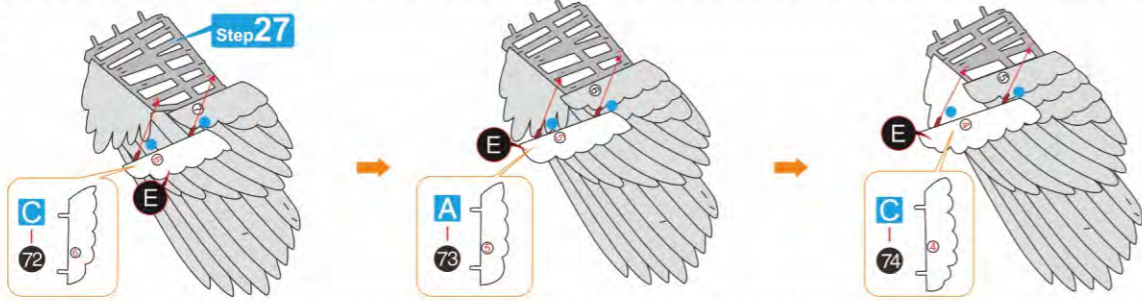


Step 15

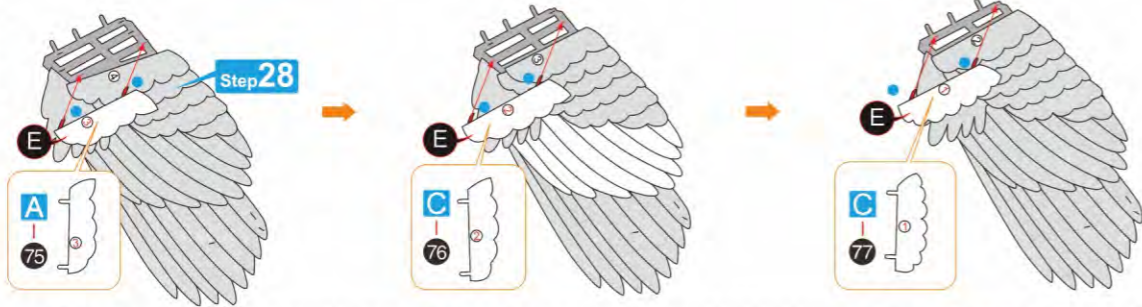




Step 28



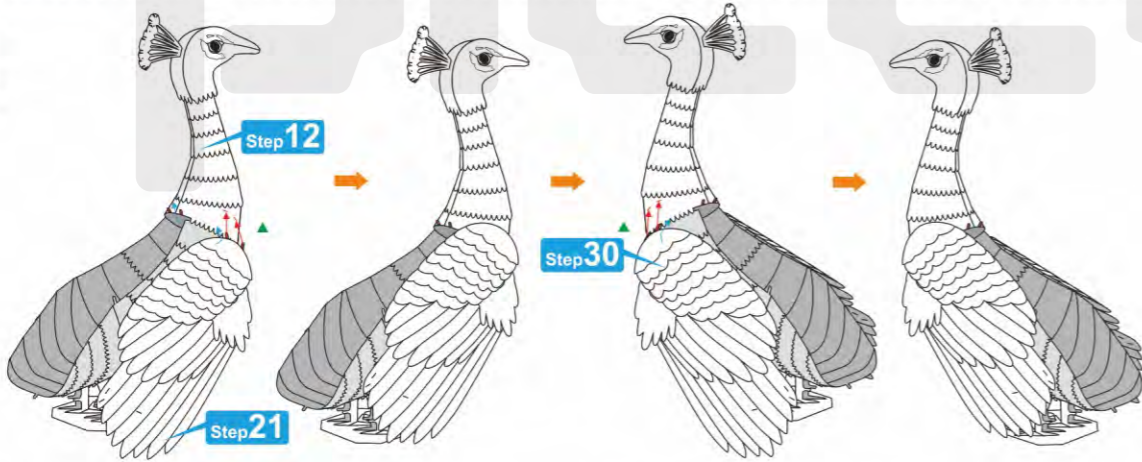
Step 29



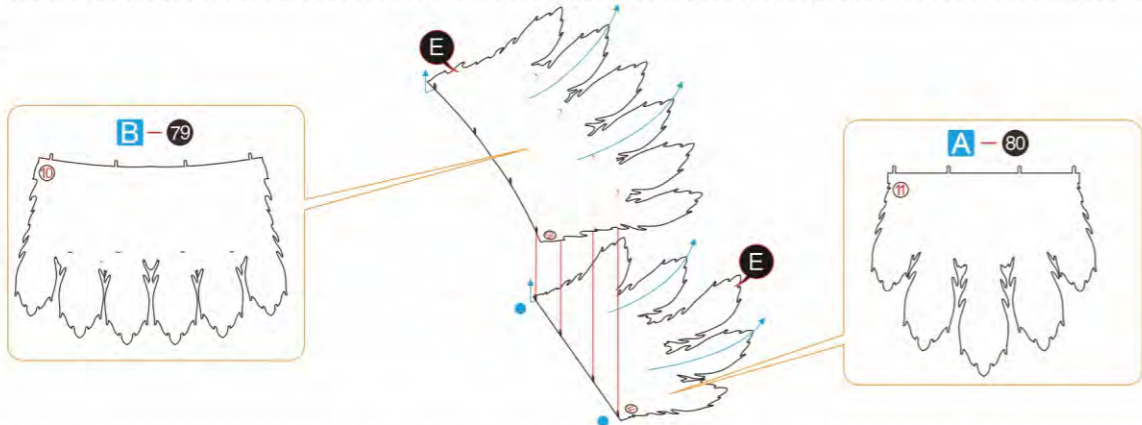
Step 30



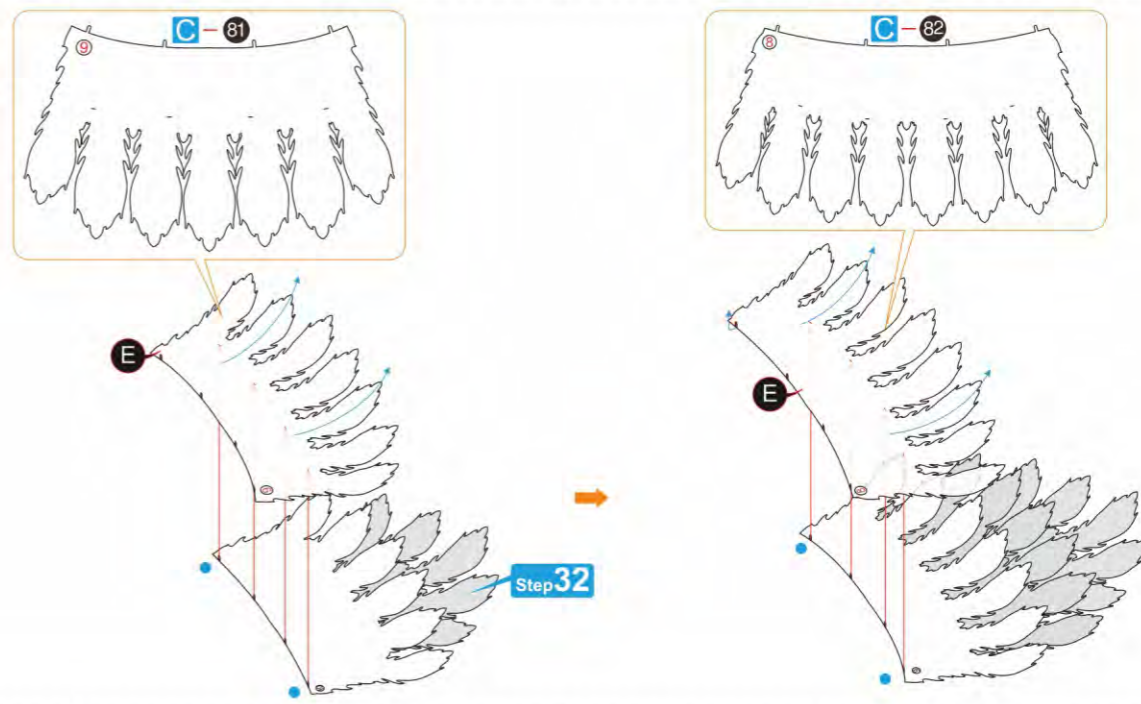
Step 31



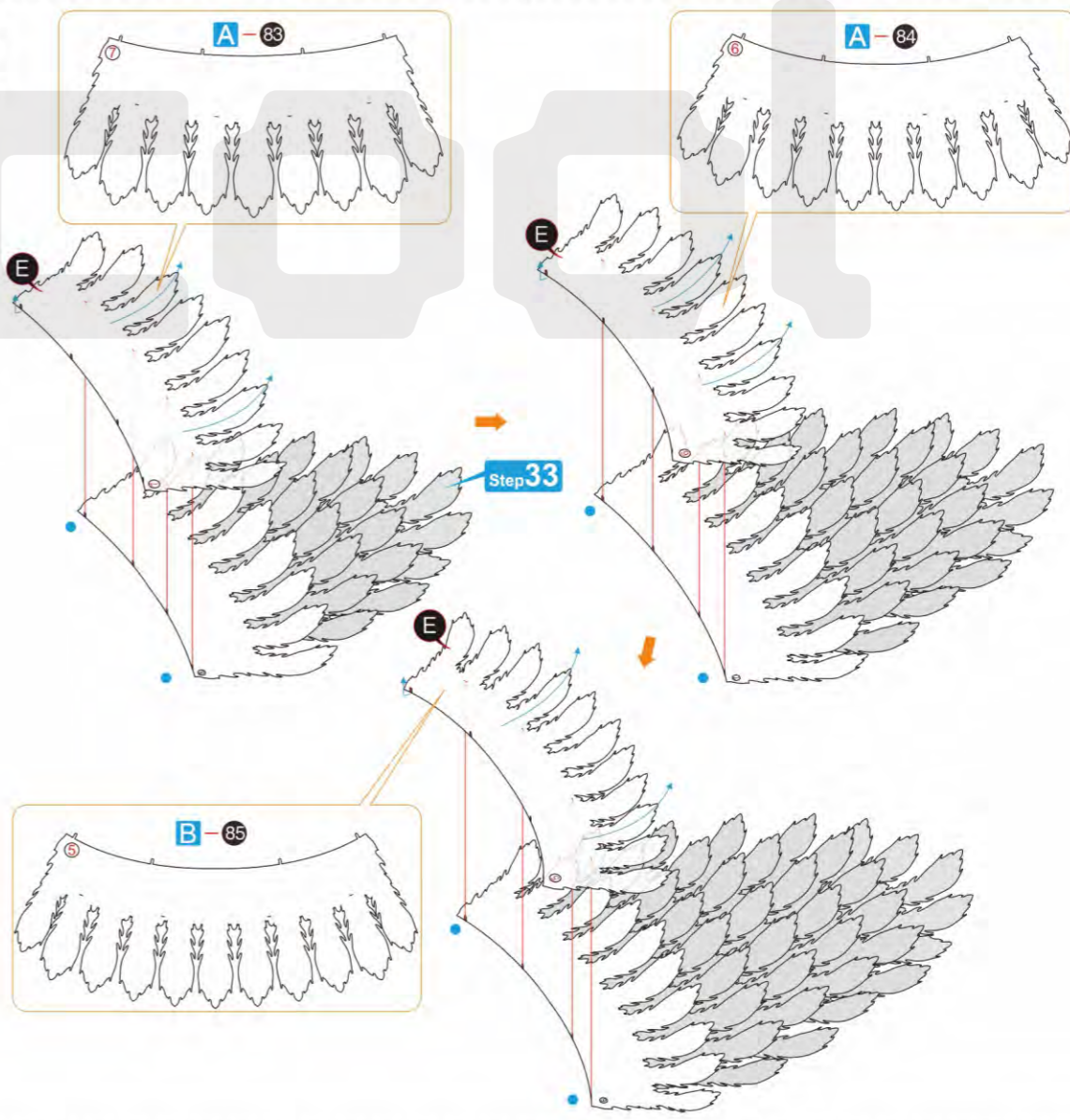
Step 32



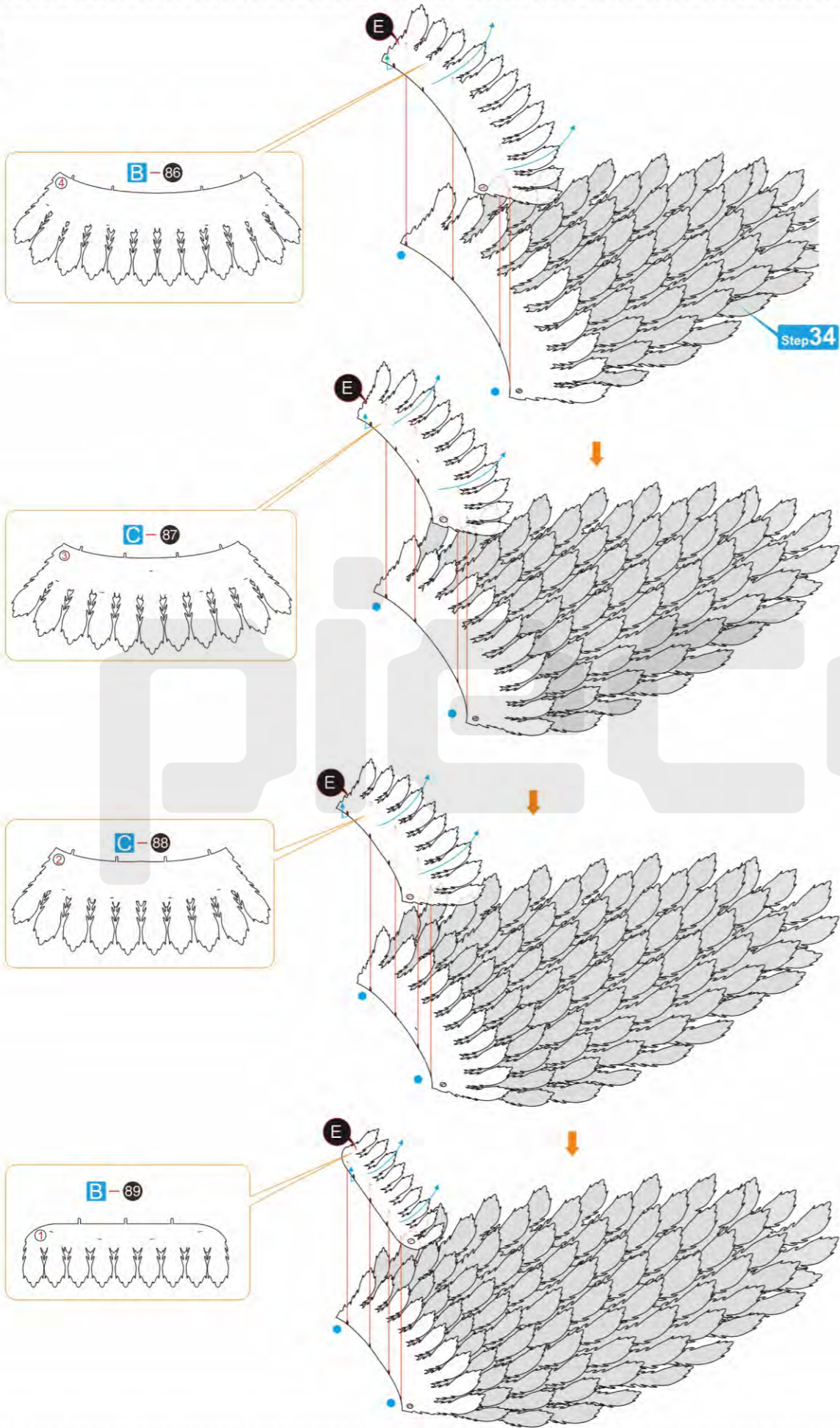
Step 33



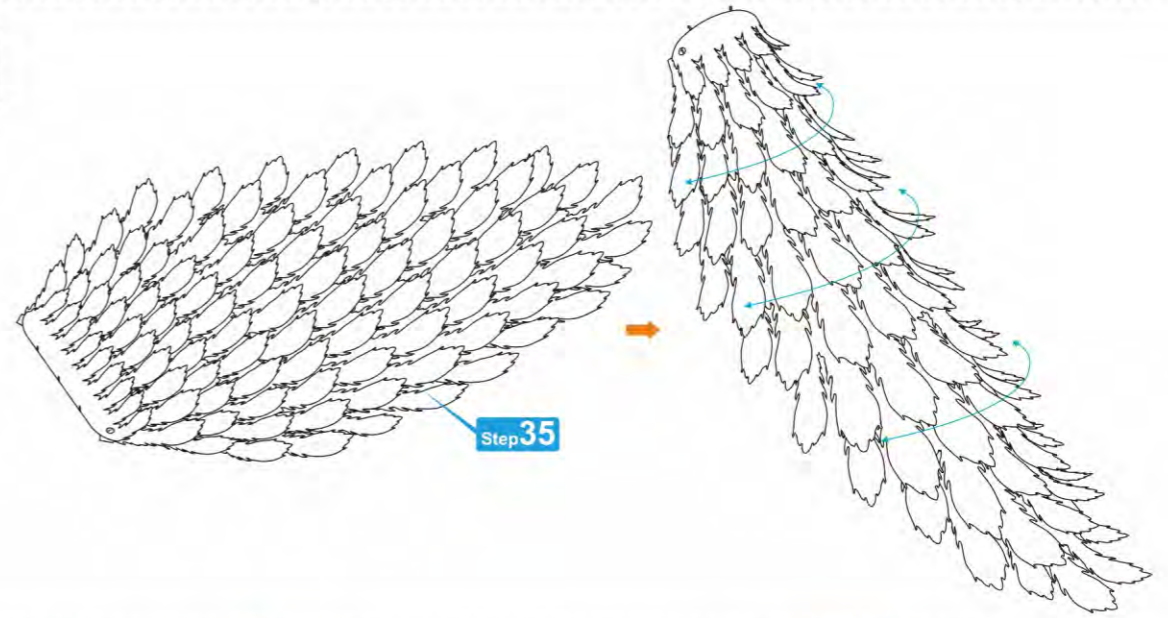
Step 34



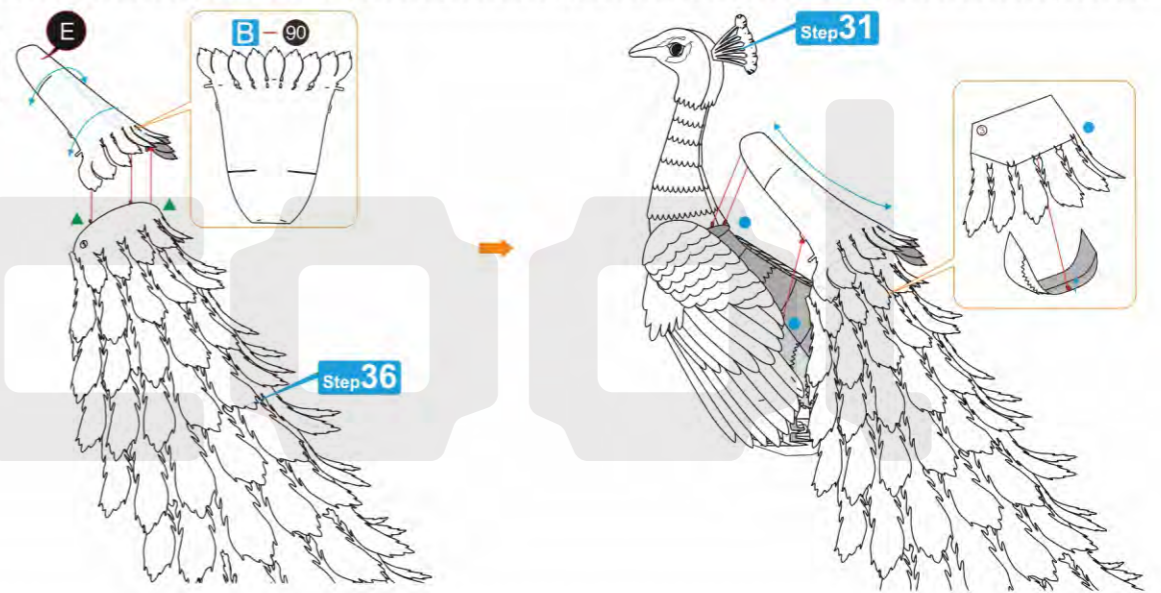
Step
35



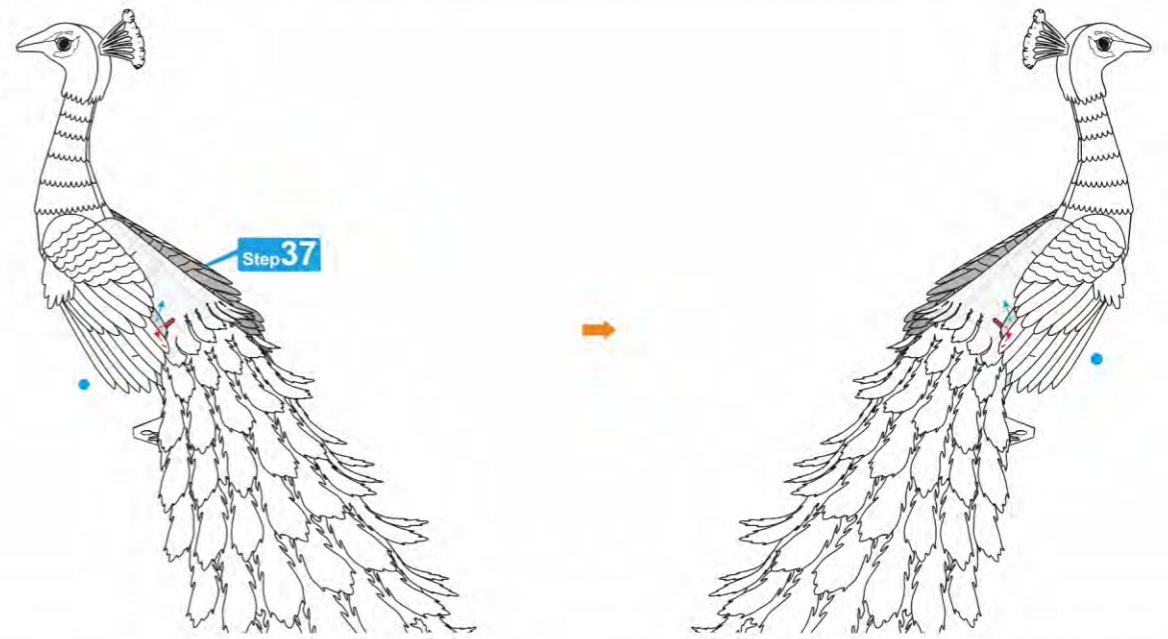
Step
36



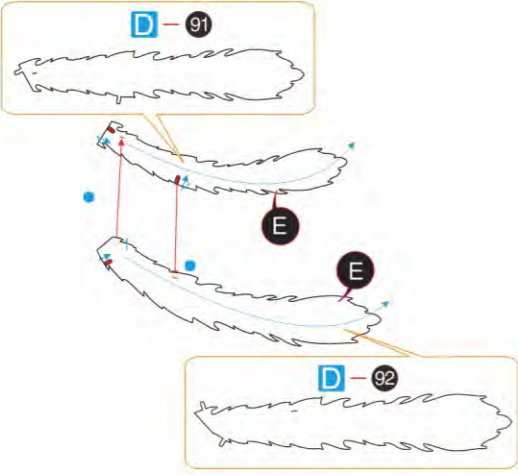
Step
37



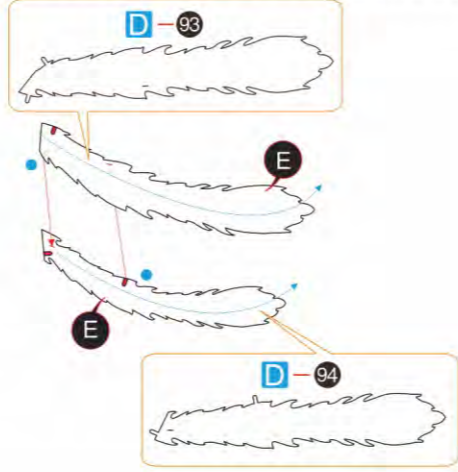
Step
38



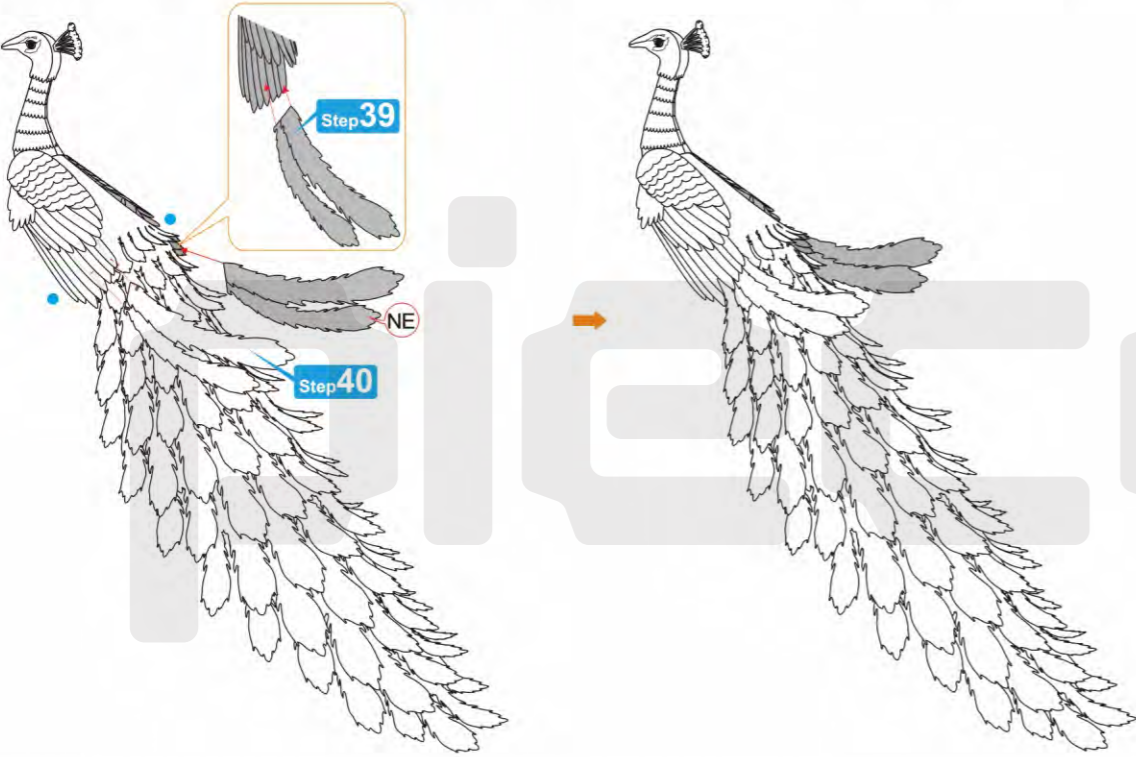
Step 39



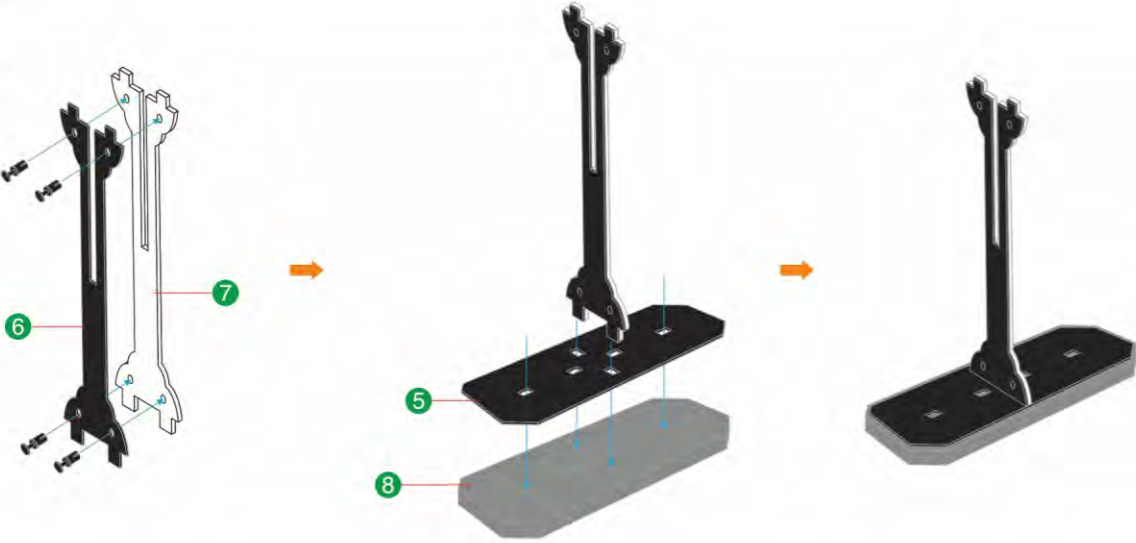
Step 40



Step 41



Step 42



Step 43



piececool

WIST PLASTIC & METAL TECHNOLOGY LIMITED

Address :2 Cunkou St,Xiangxi Industrial District,Liaobu Town,Dongguan City,
Guangdong Province,China. Postcode: 523408

Email: kf@wist-group.com

Service Hotline: 0769-8119 2243

© 2022 Wist Plastic & Metal Technology Limited.

CP-ASSY-HP242#-A2-20220420