

piececool

THE CHINESE LOVE PAVILION

HP196

Assembly Instructions

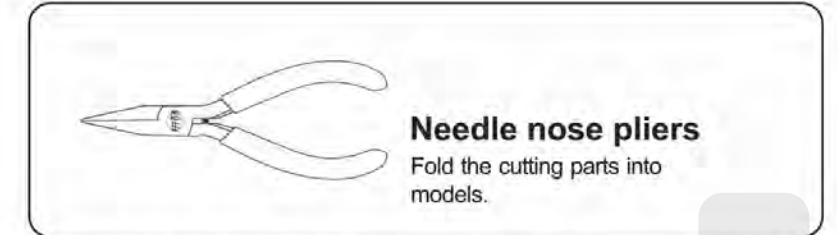
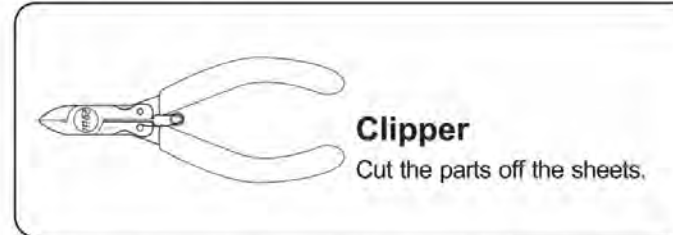
© 2022 Wist Plastic & Metal Technology Limited.

Installation Reminder :



⚠ WARNING – Please handle metal sheets with care. The parts may have sharp edges that could cut or scratch skin. Keep away from children.

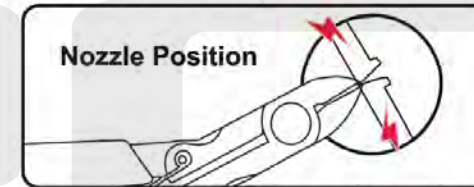
• Prepare tools:



It is recommended to use piececool authentic assembly tools to build or fix the design. It is tailor made for the metal pieces and user friendly.

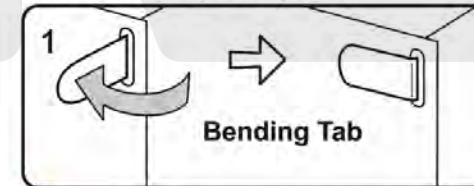
• Installation Method:

a. Remove the parts



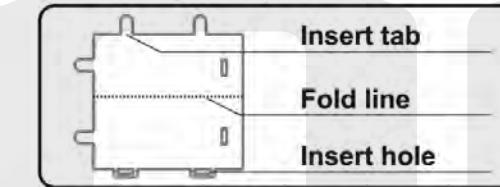
Please use the clipper to cut the nozzle position and remove the parts.

d. Retaining the parts



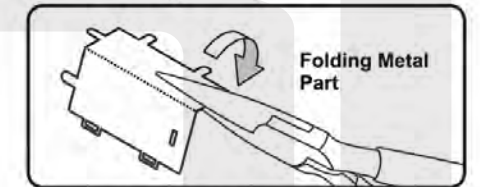
● Insert the hole, bending tab with angle 90°

b. Identify the parts

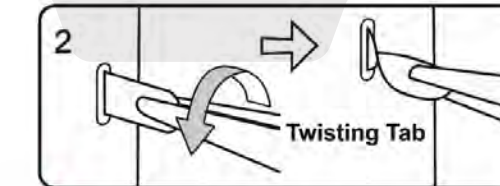


Identify the insert tab, fold line and the insert hole.

c. Folding the parts



Please use the Needle nose pliers to fold the cutting parts into models.



▲ Insert the hole, twisting tab with angle 90°

• Attention :

- E** Engraved / Color side
- NE** Non-engraved / Silver side
- !** Attention Point
- ▭** Keep the parts symmetrical

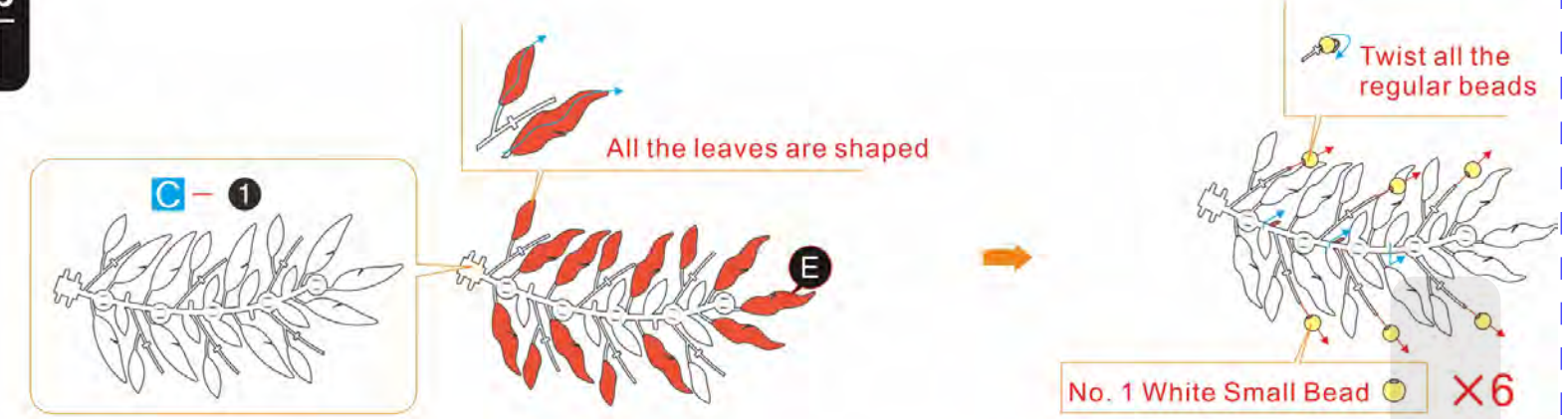
When cutting metal parts, please do not cut the "insert tab" as "nozzle position". Only cut the parts of the current step when cutting the parts. Do not cut all the parts at one time to avoid loss.

When encountering the parts of the folding line, please pay attention to the front and back of the metal sheet and the direction of the folding. According to the direction indicated in the instruction, cut lightly and fold slowly. It is best to fold it once. Do not fold it repeatedly to avoid damage to the parts.

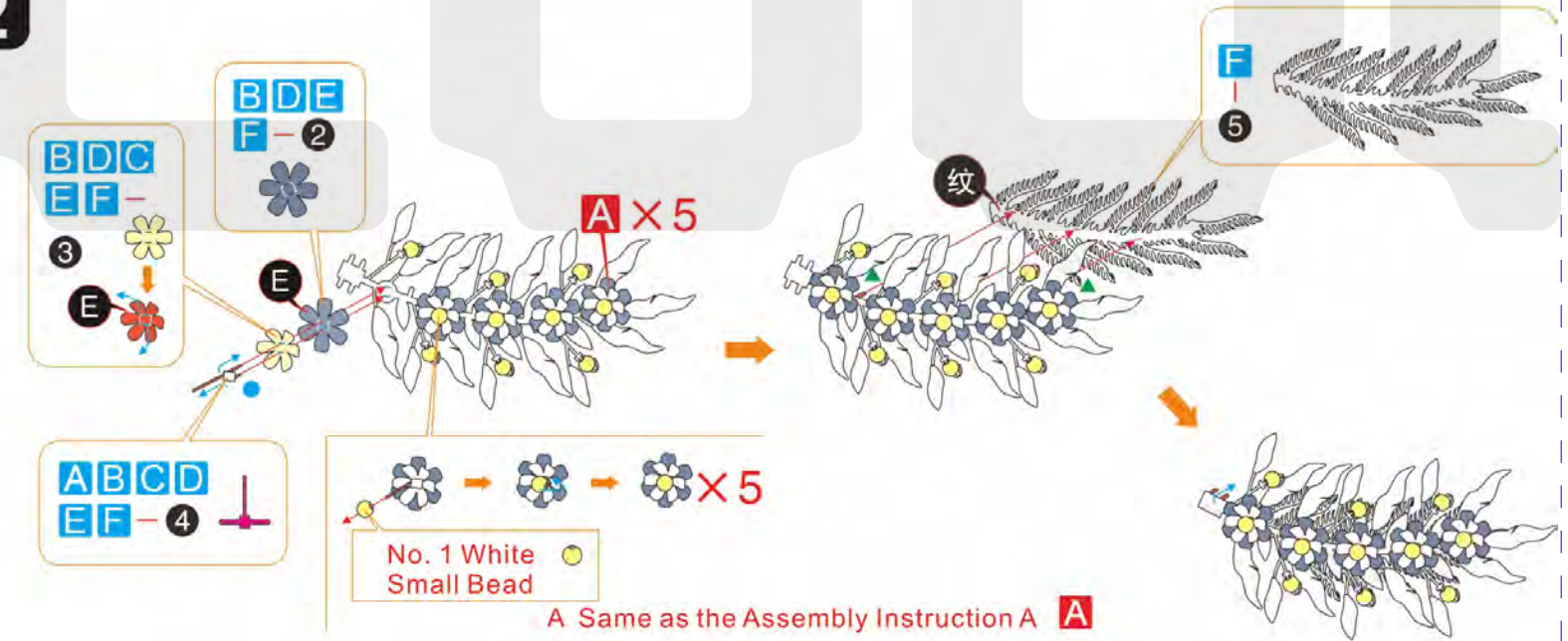
Assembling steps:



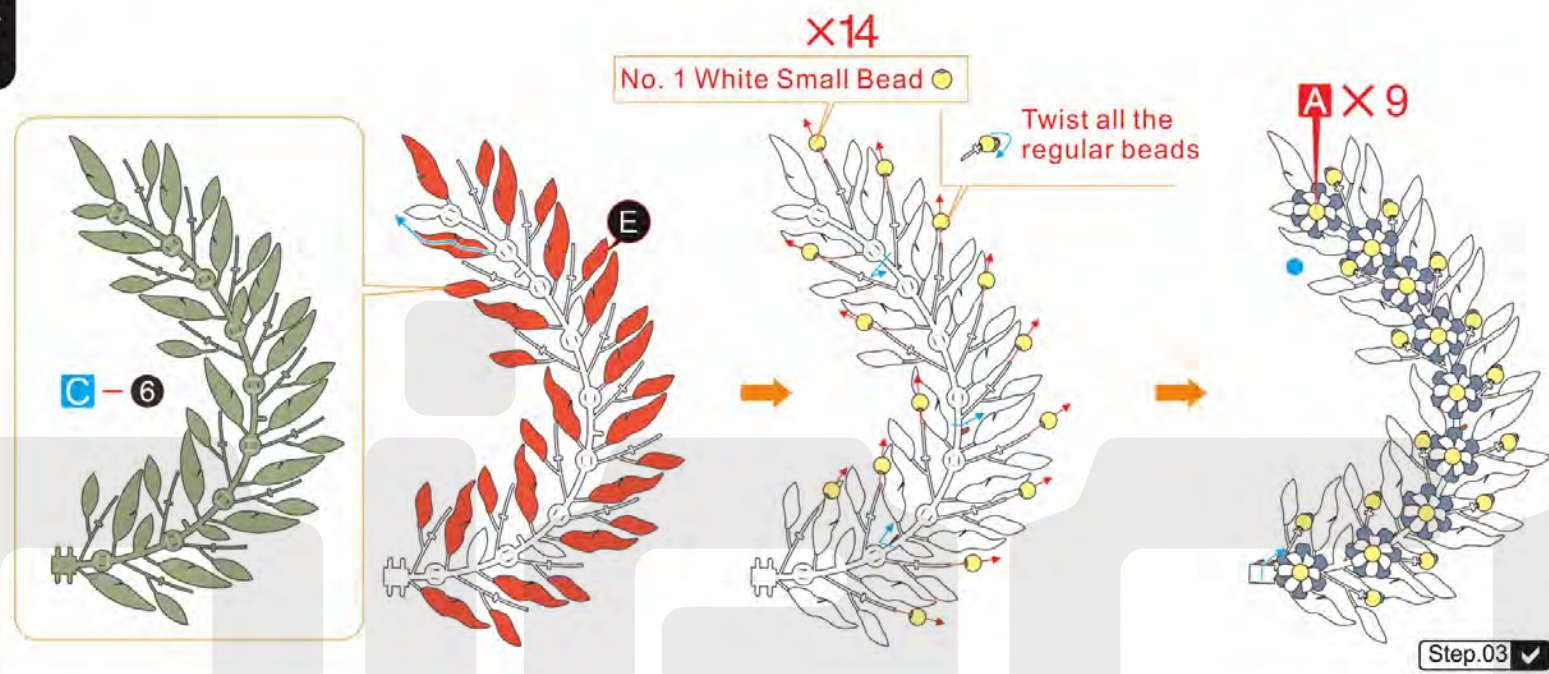
Step 01



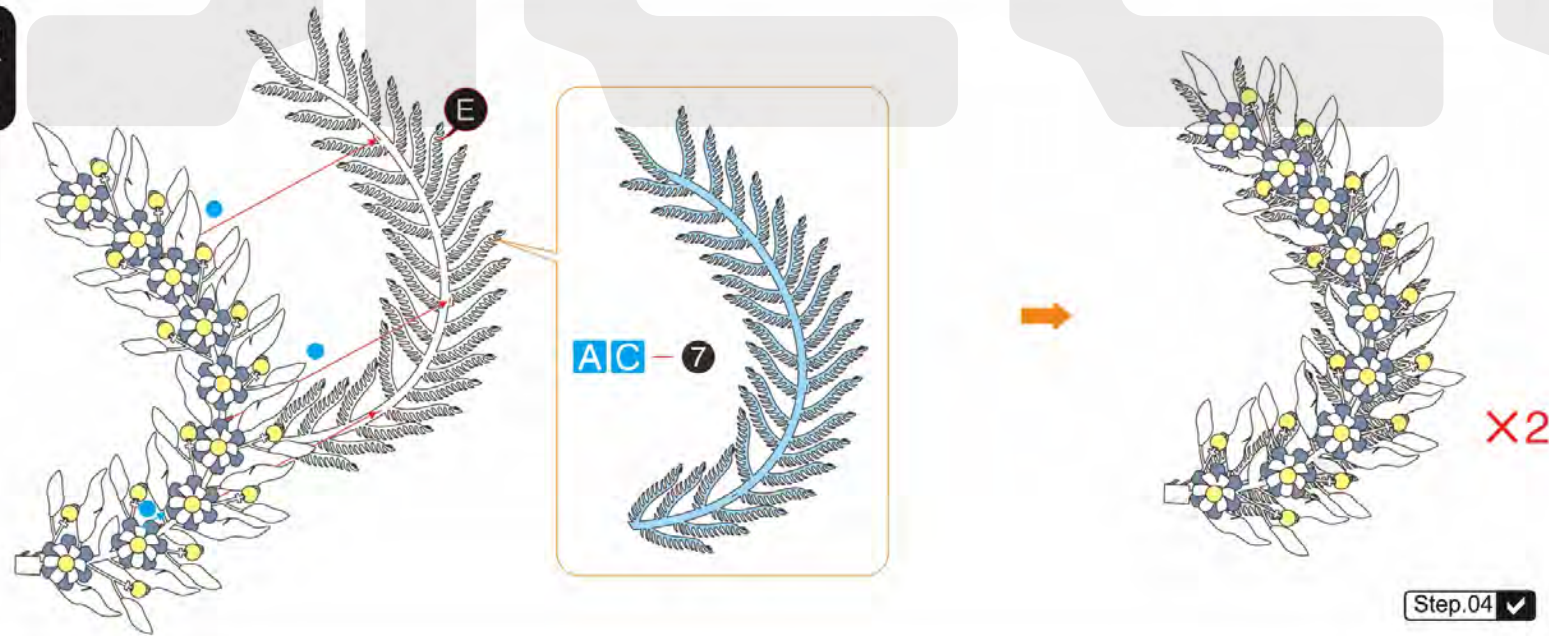
Step 02



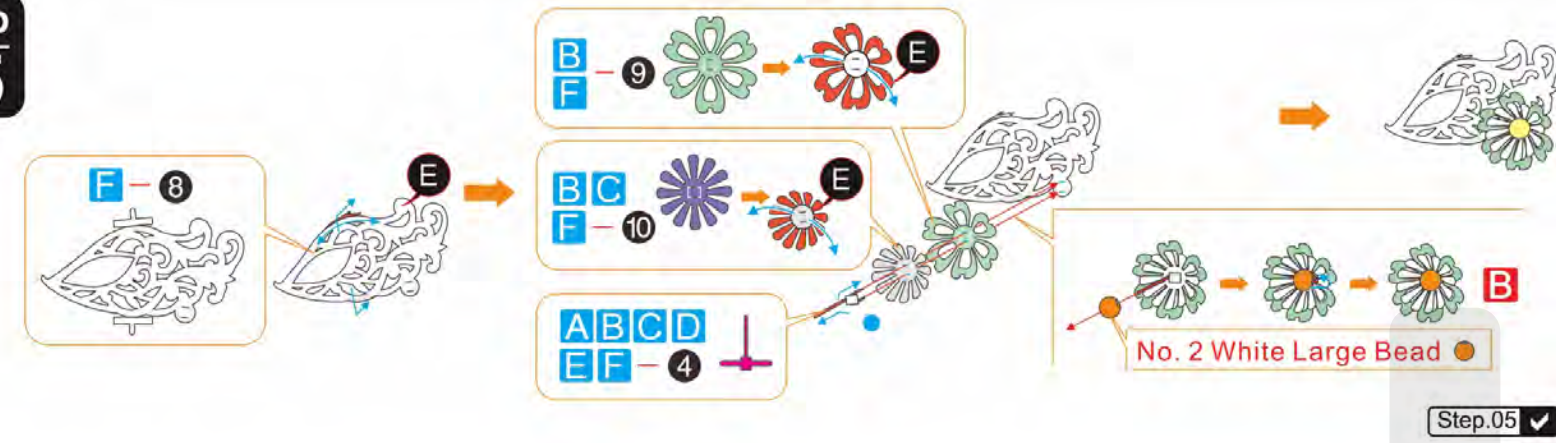
Step 03



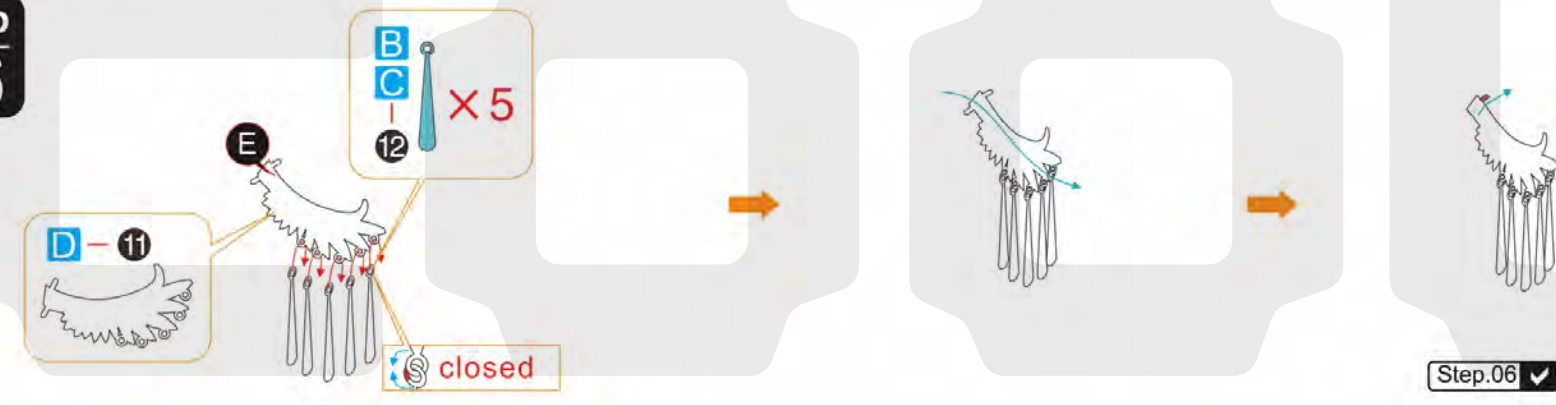
Step 04



Step 05



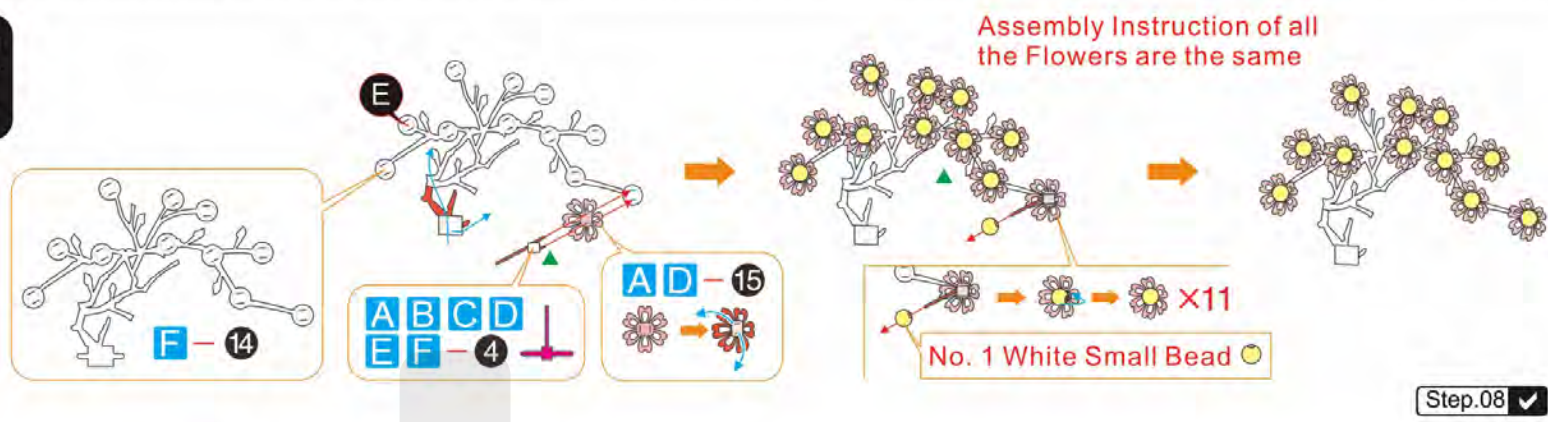
Step 06



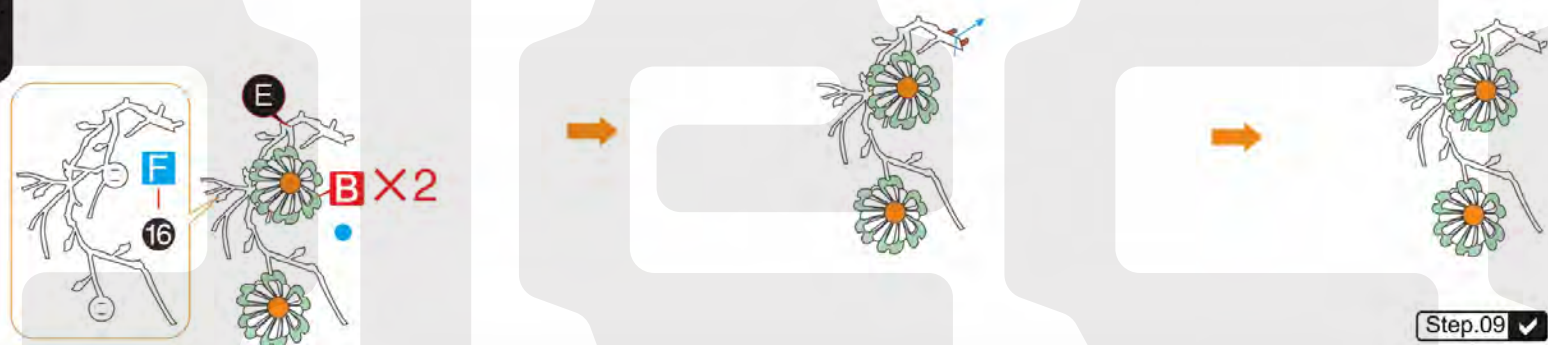
Step 07



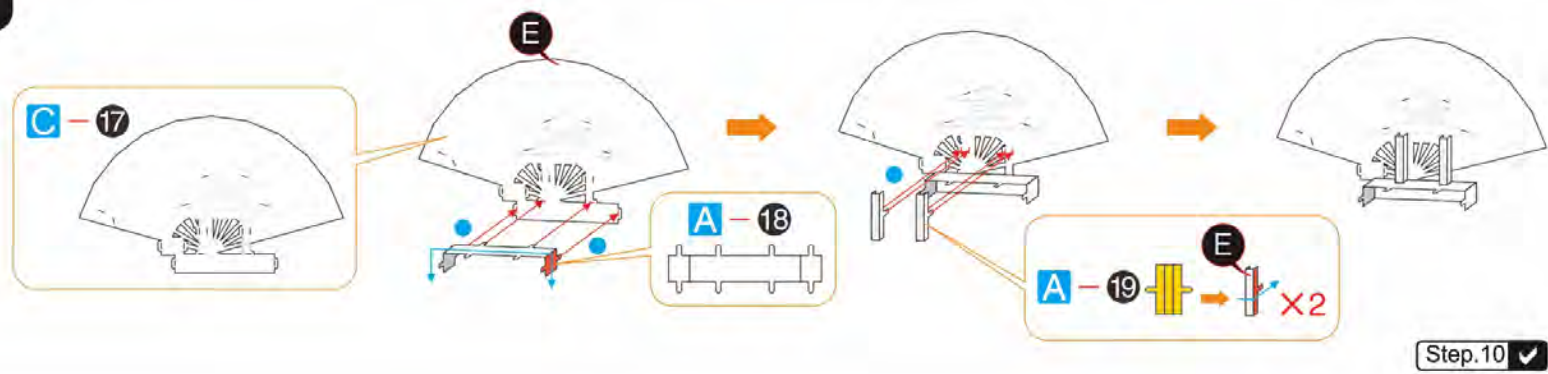
Step 08



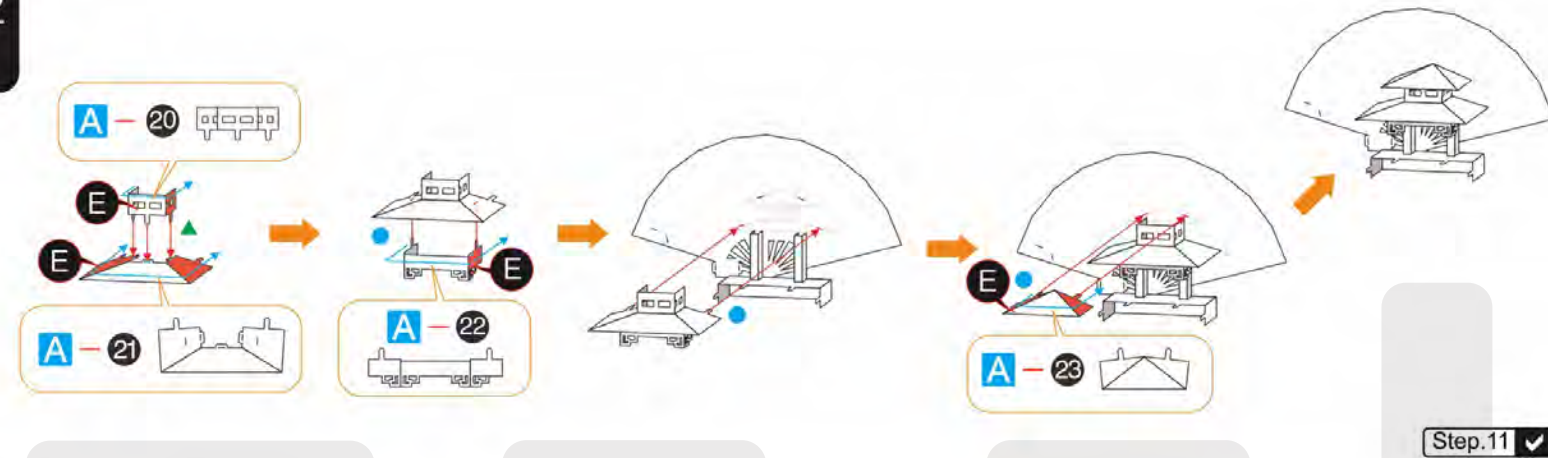
Step 09



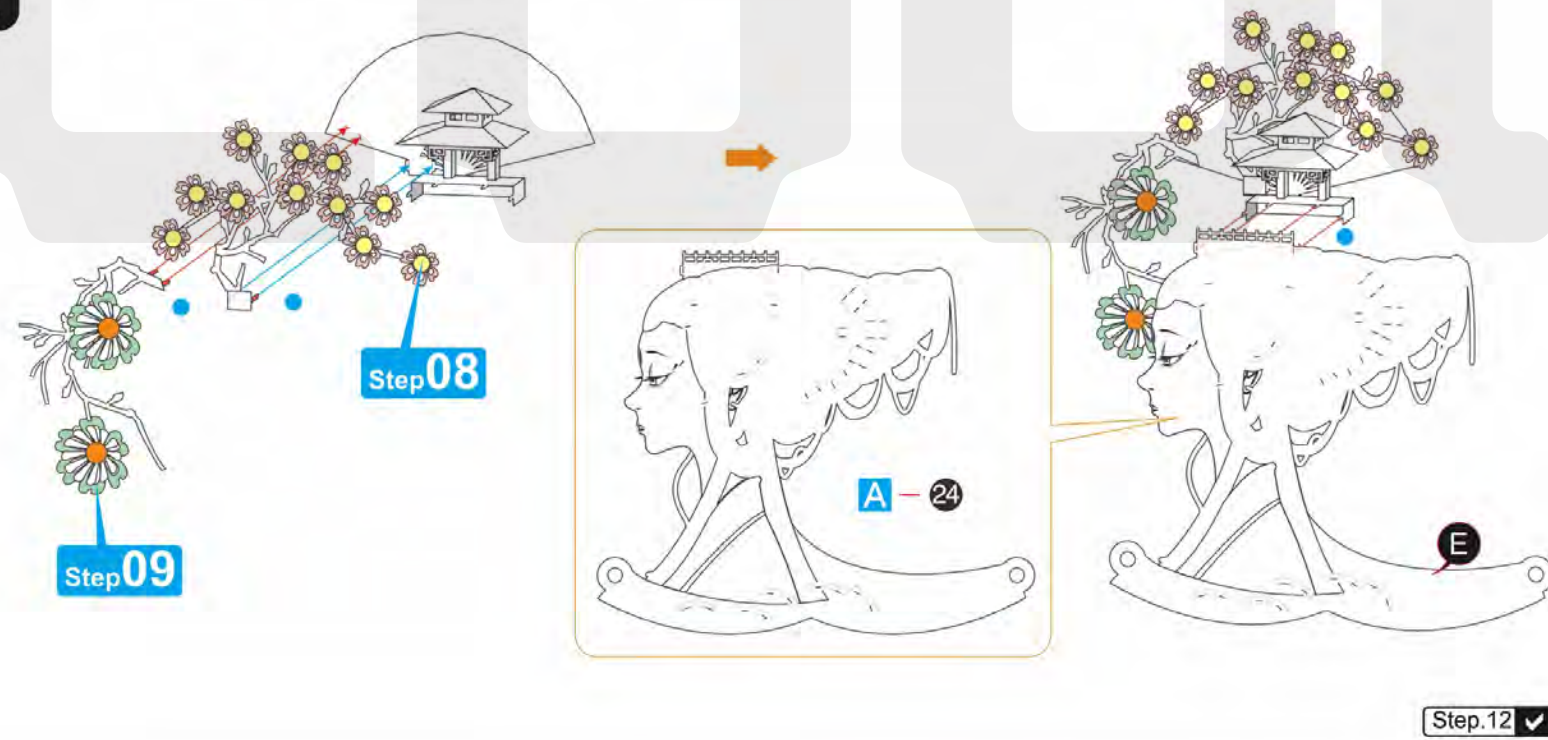
Step 10



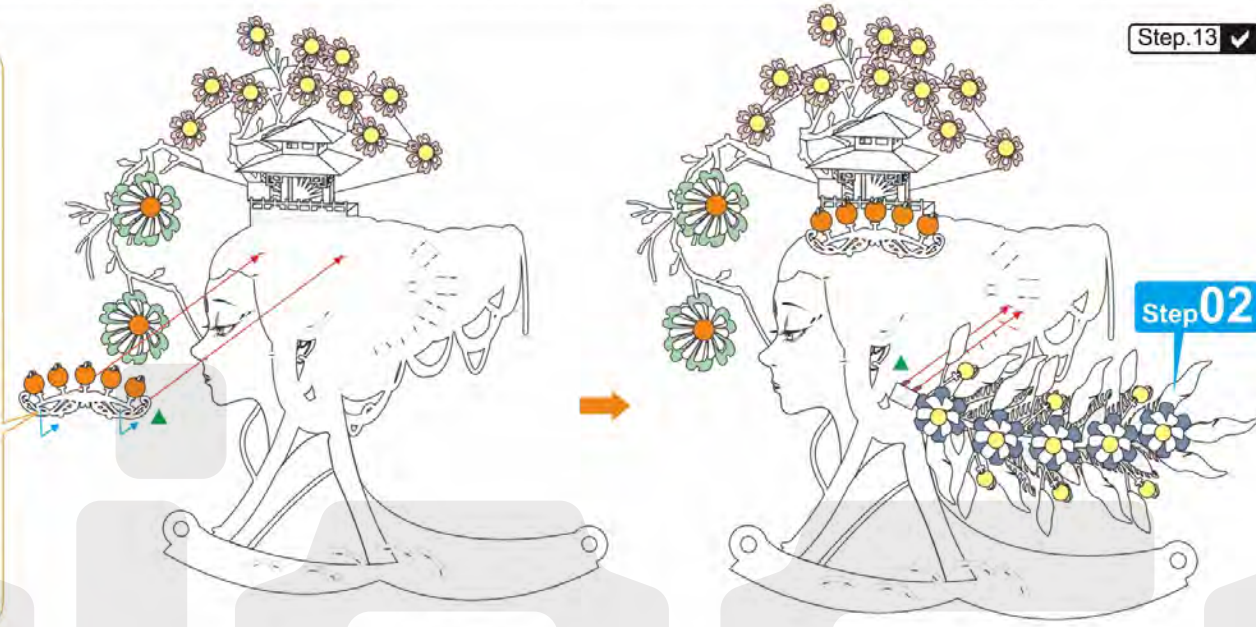
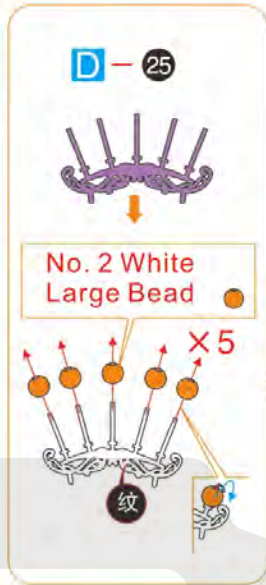
Step 11



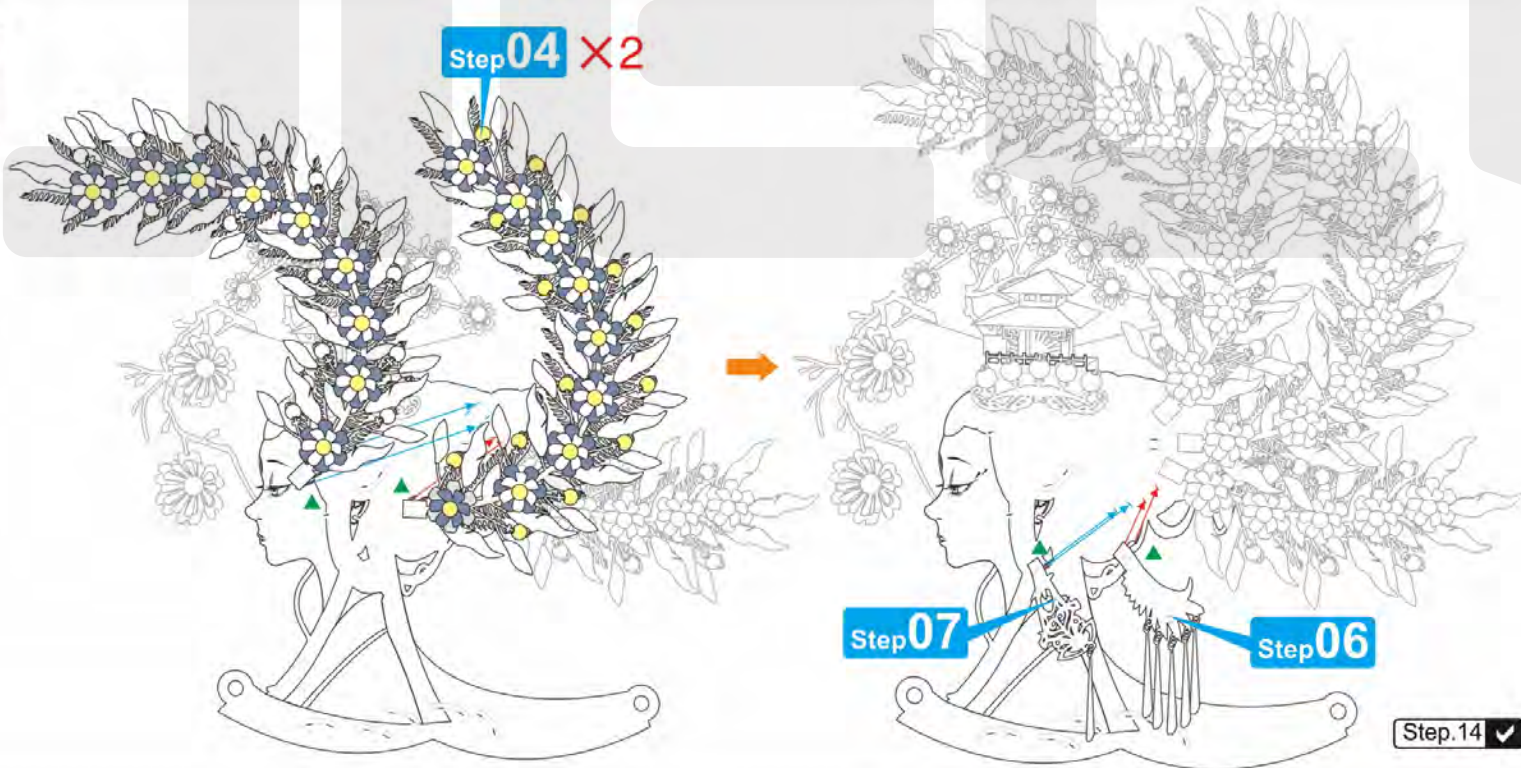
Step 12



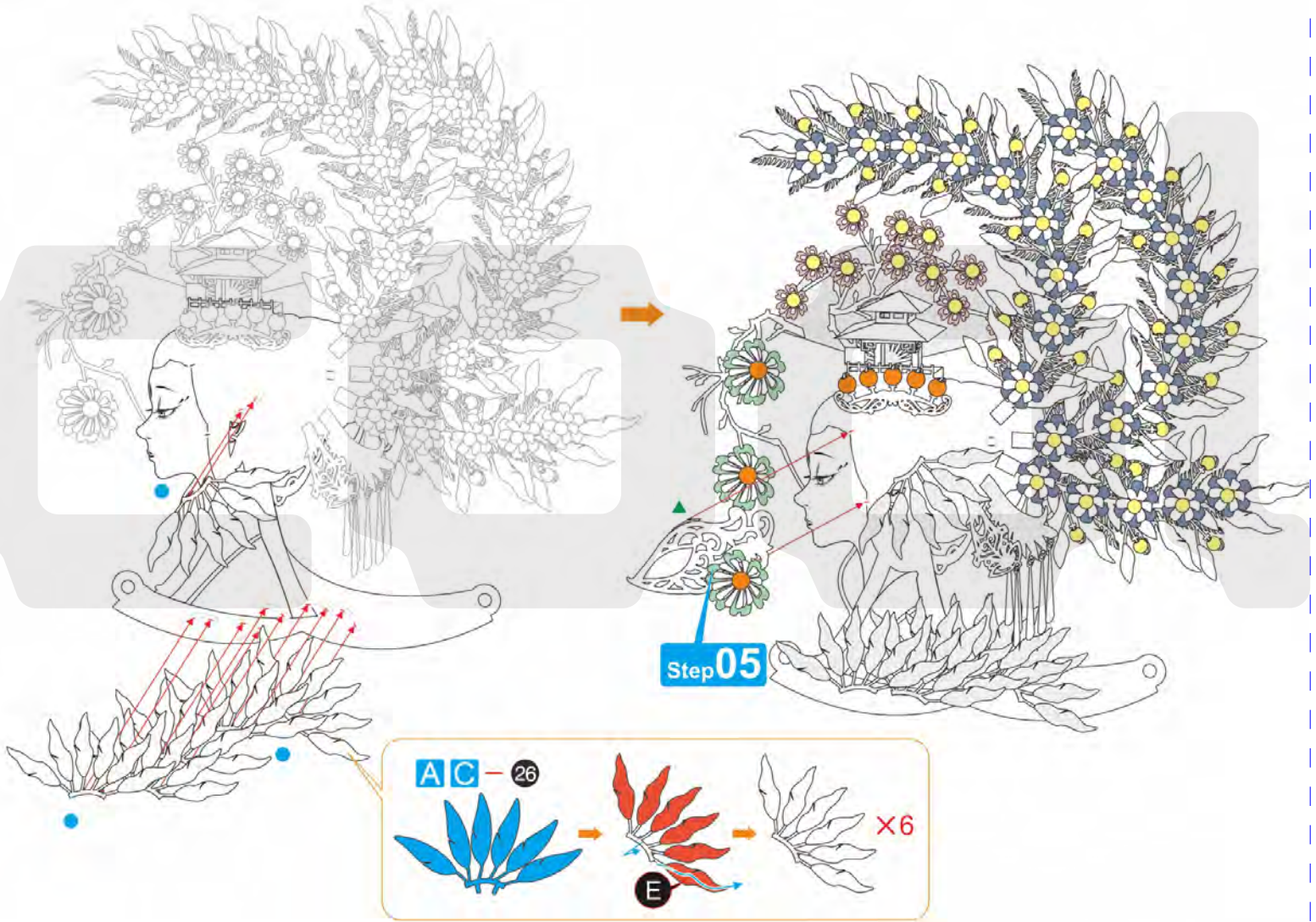
Step
13



Step
14

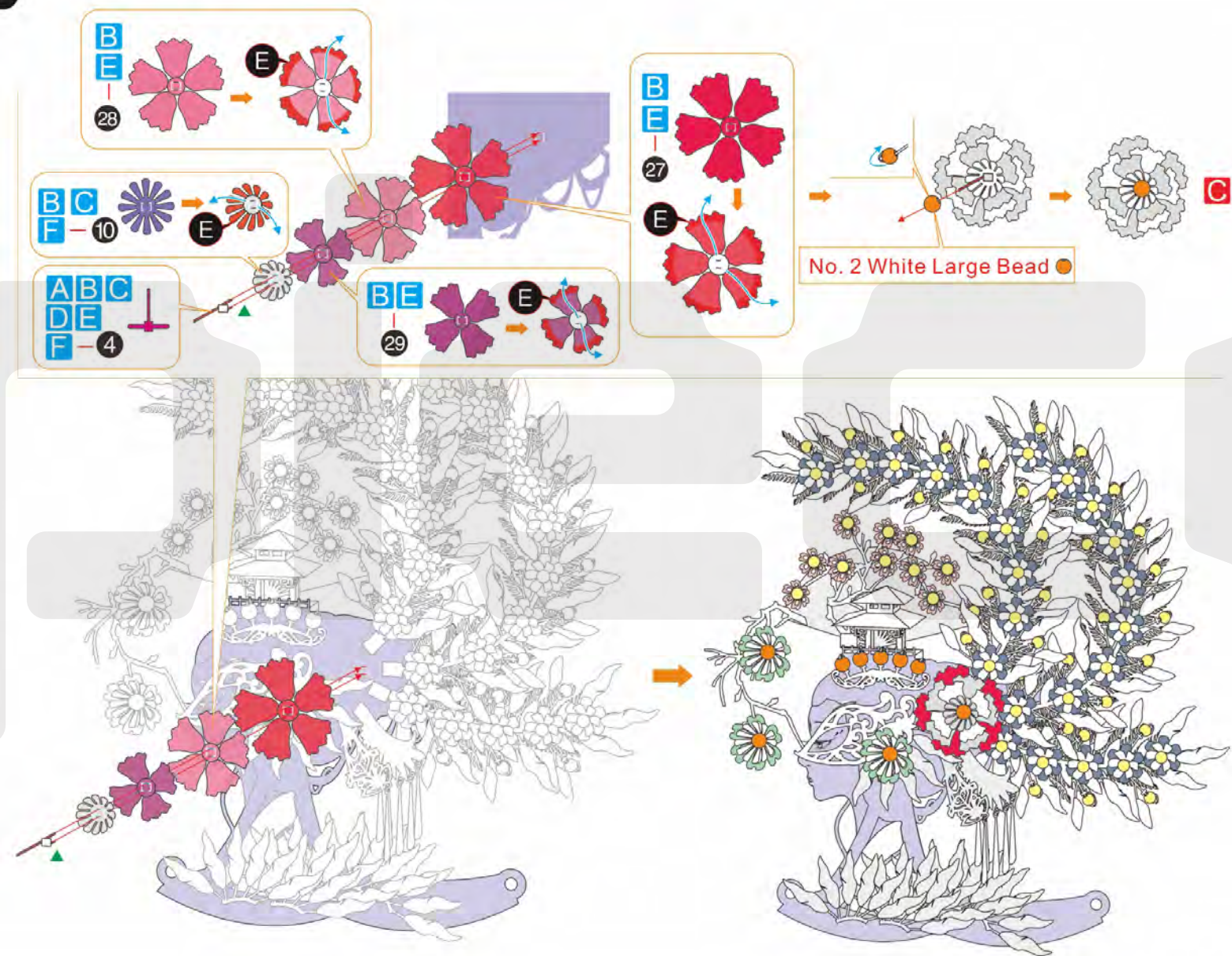


Step
15



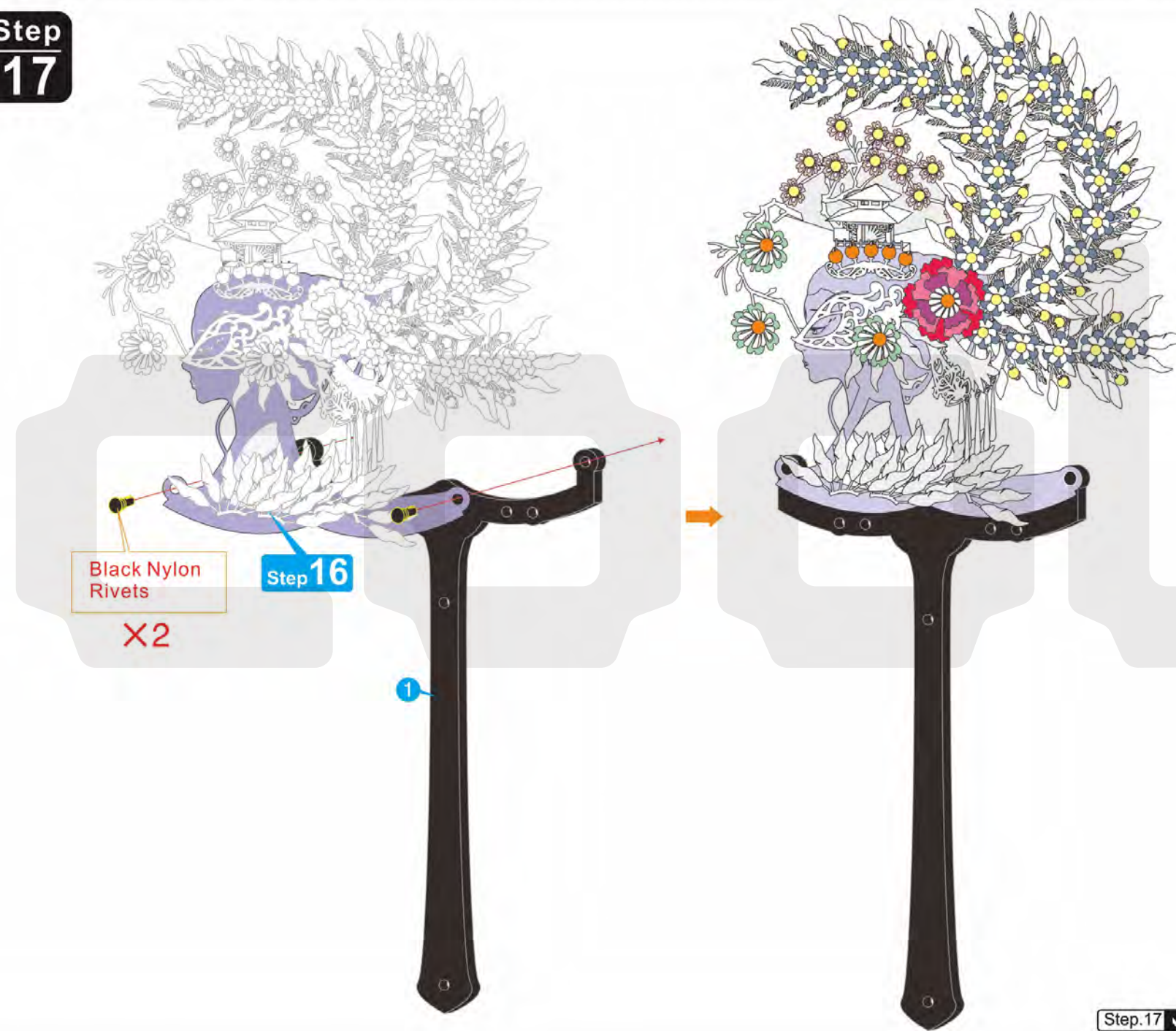
Step.15 ✓

Step 16



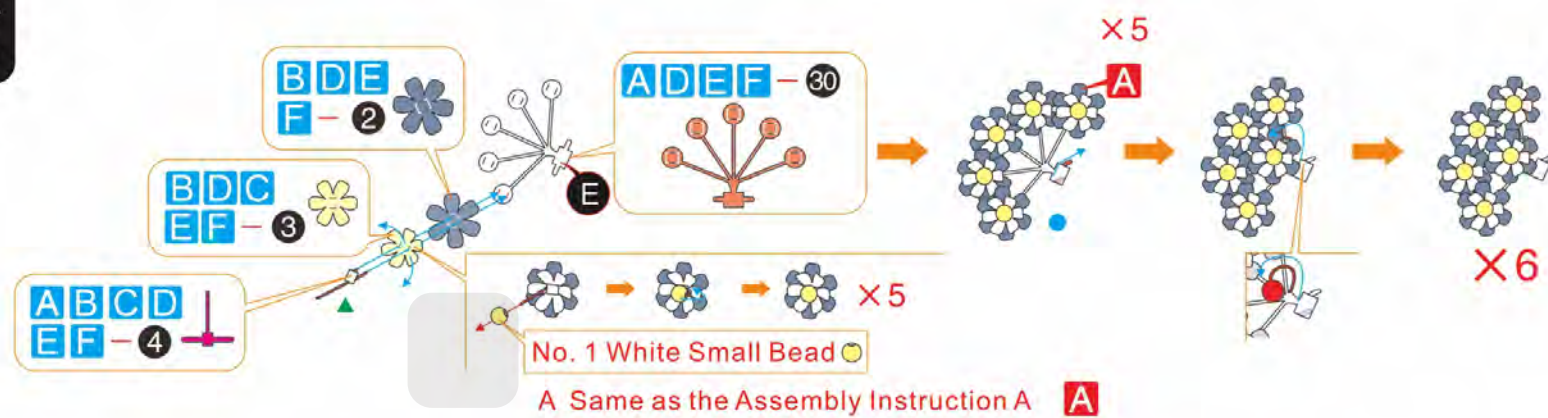
Step.16

Step 17



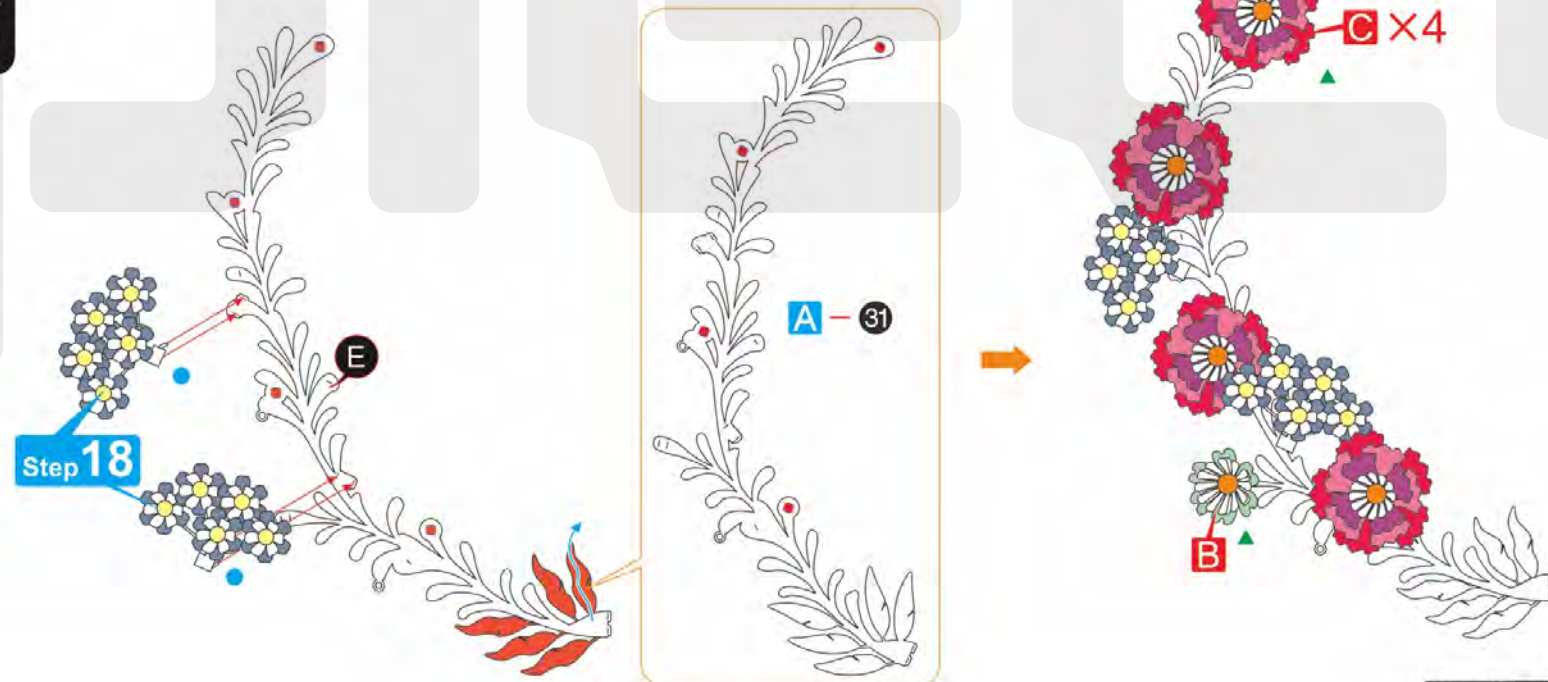
Step.17

Step 18



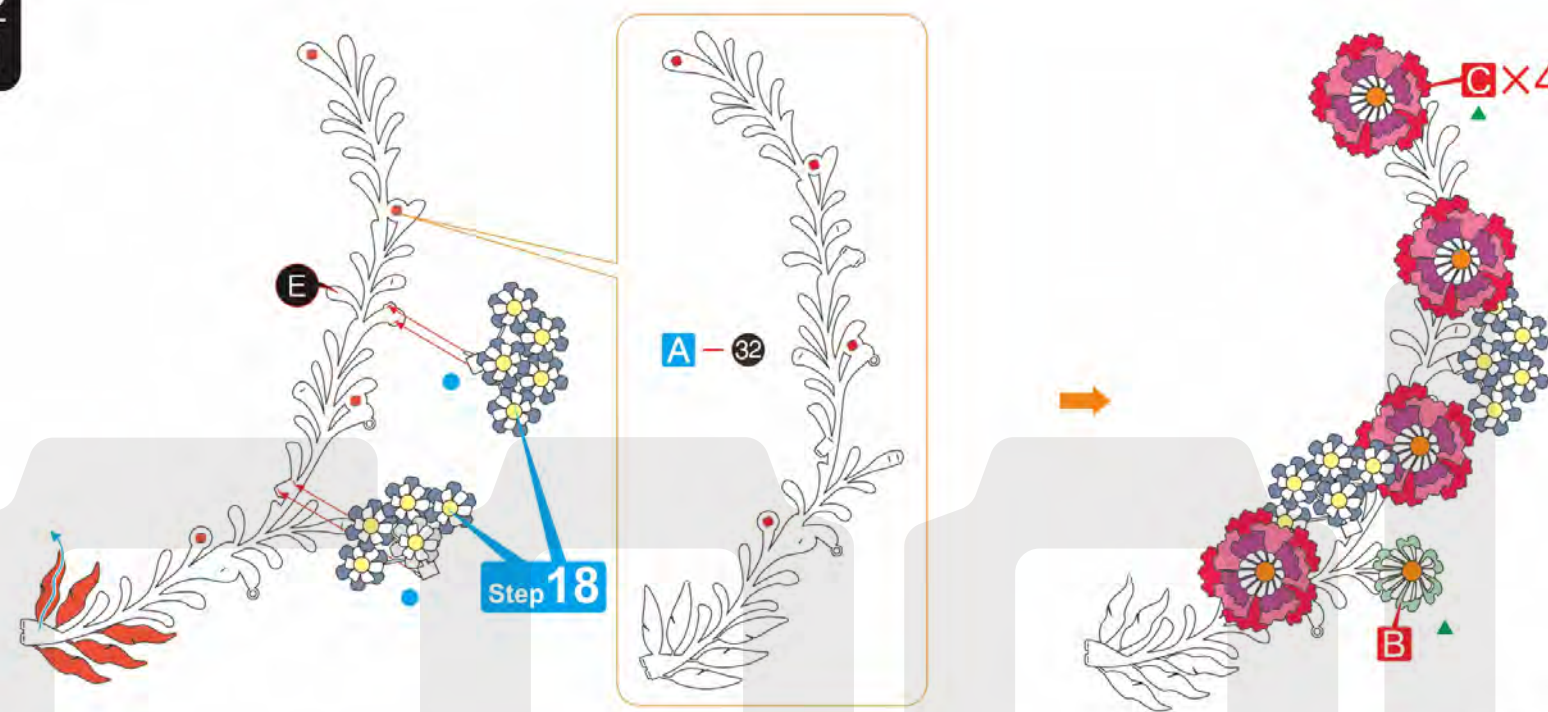
Step.18

Step 19



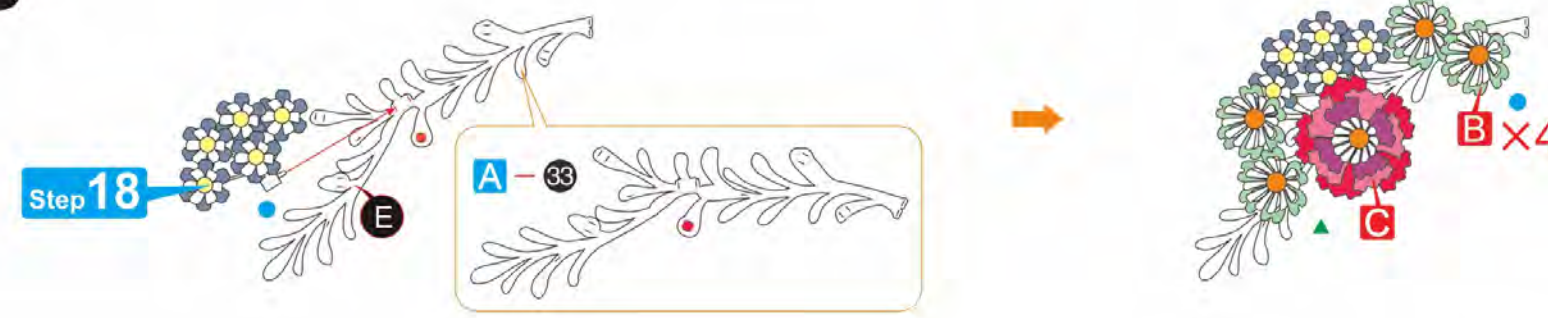
Step.19

Step 20



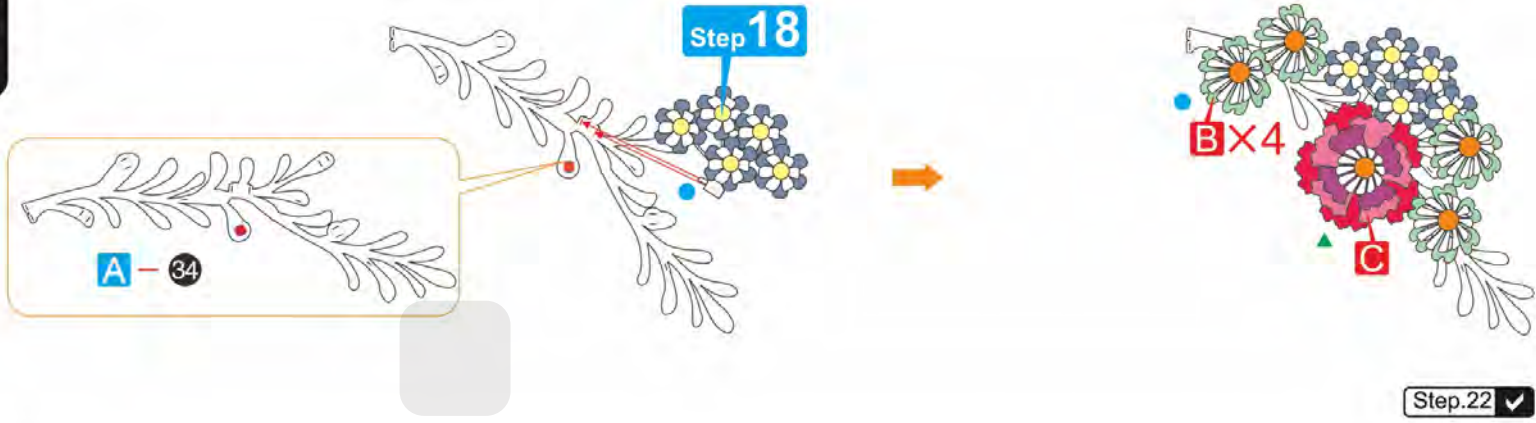
Step.20

Step 21



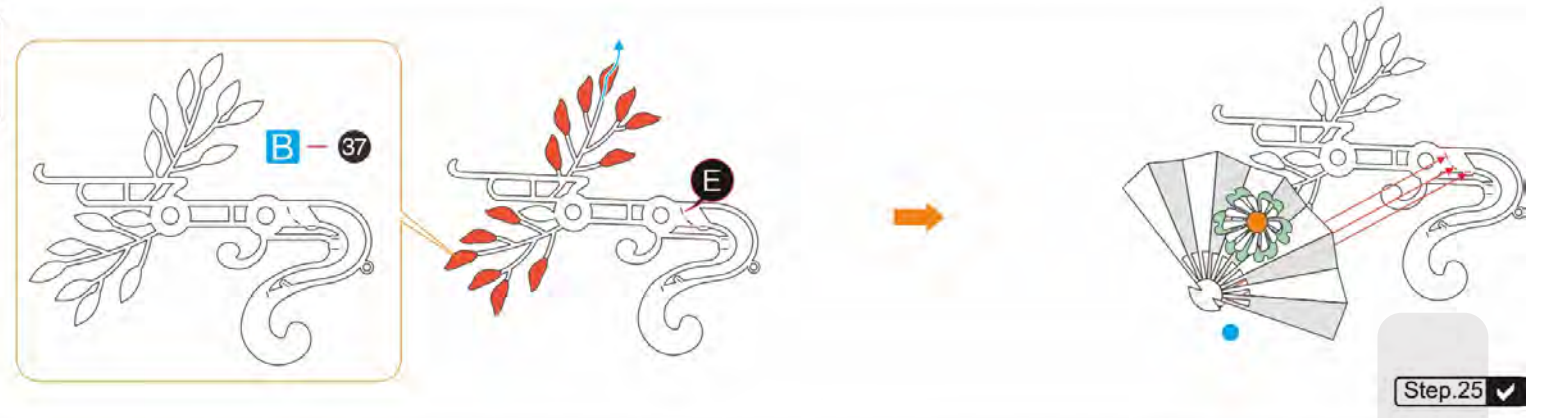
Step.21

Step
22



Step.22 ✓

Step
25



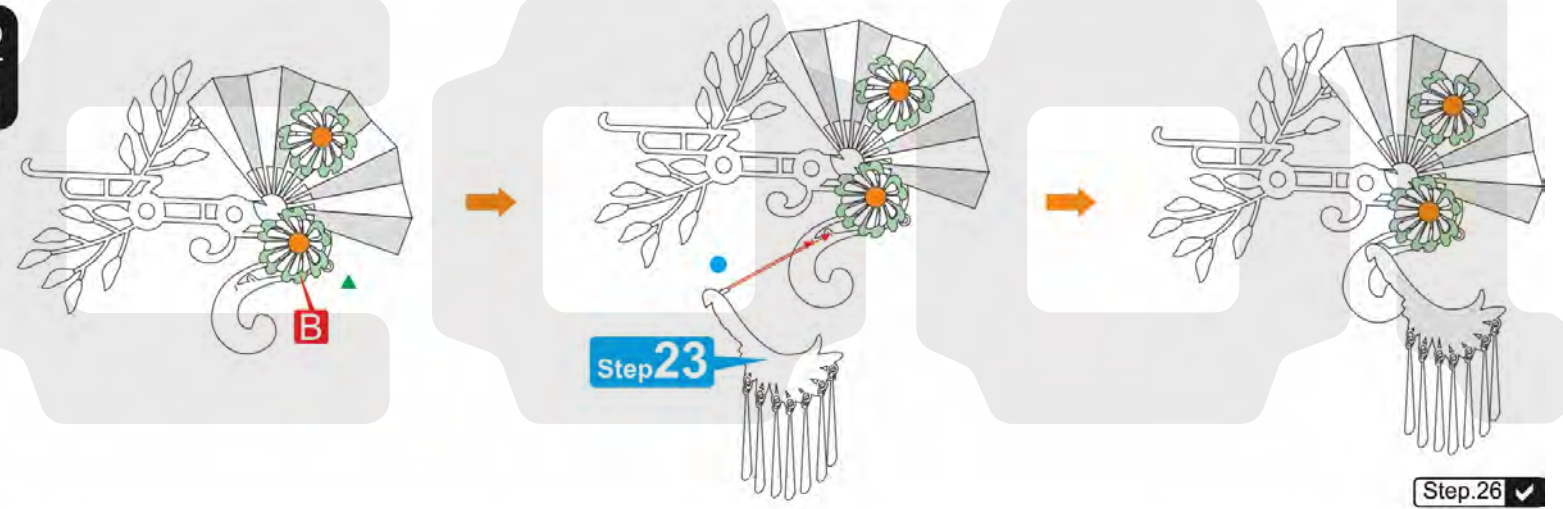
Step.25 ✓

Step
23



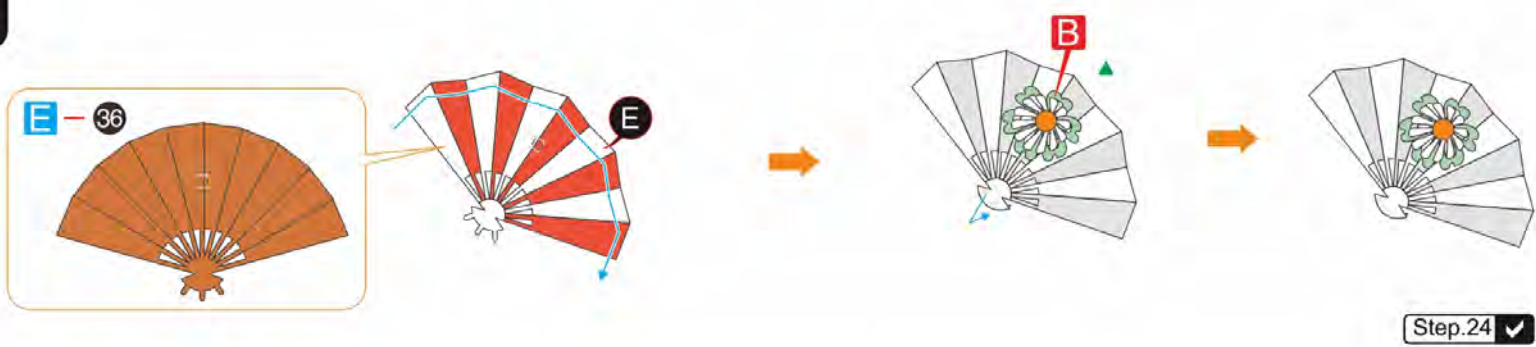
Step.23 ✓

Step
26



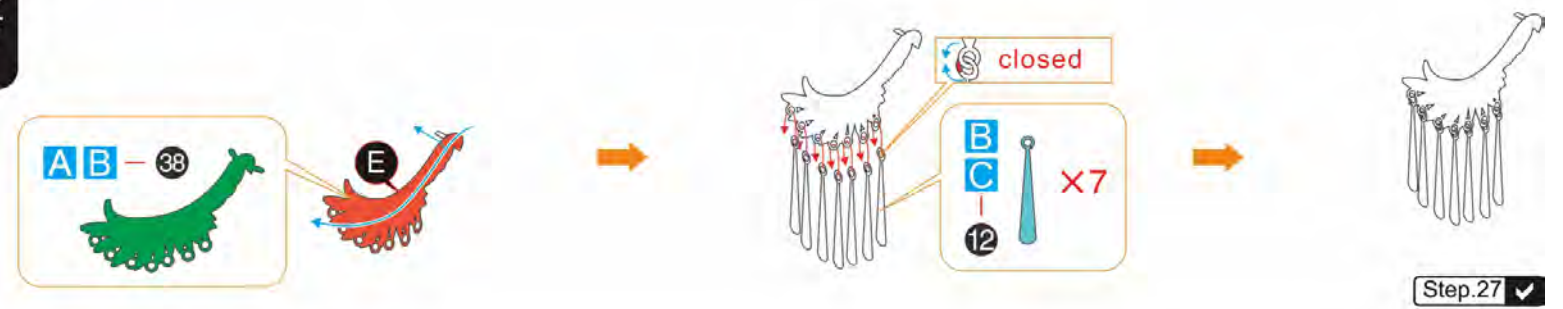
Step.26 ✓

Step
24



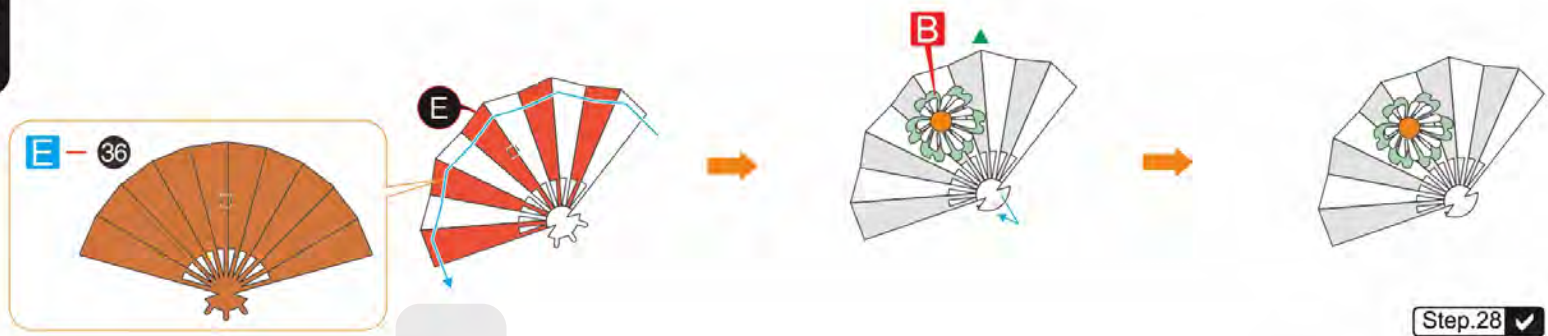
Step.24 ✓

Step
27

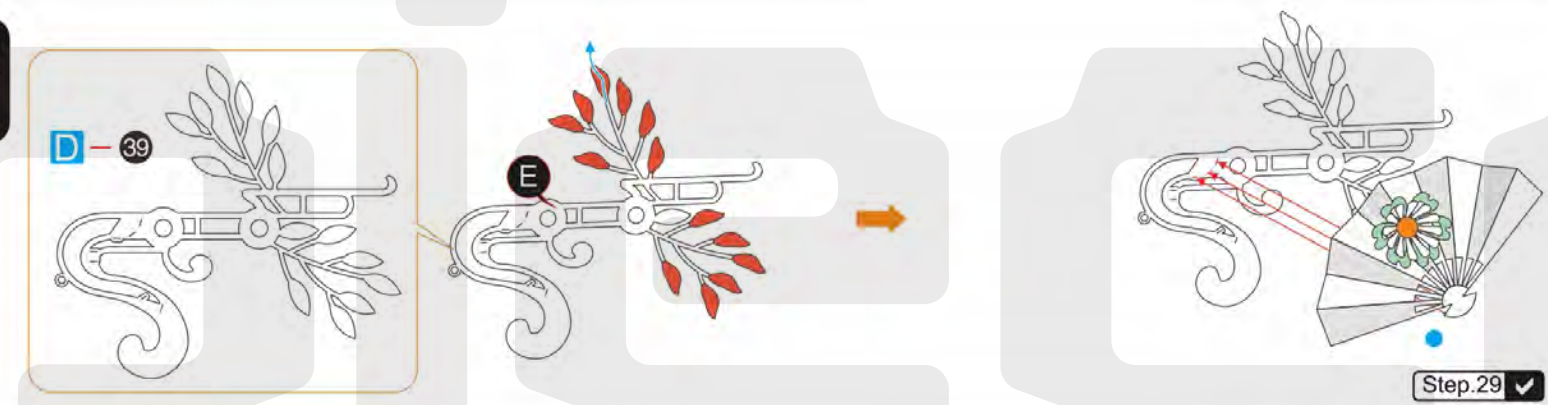


Step.27 ✓

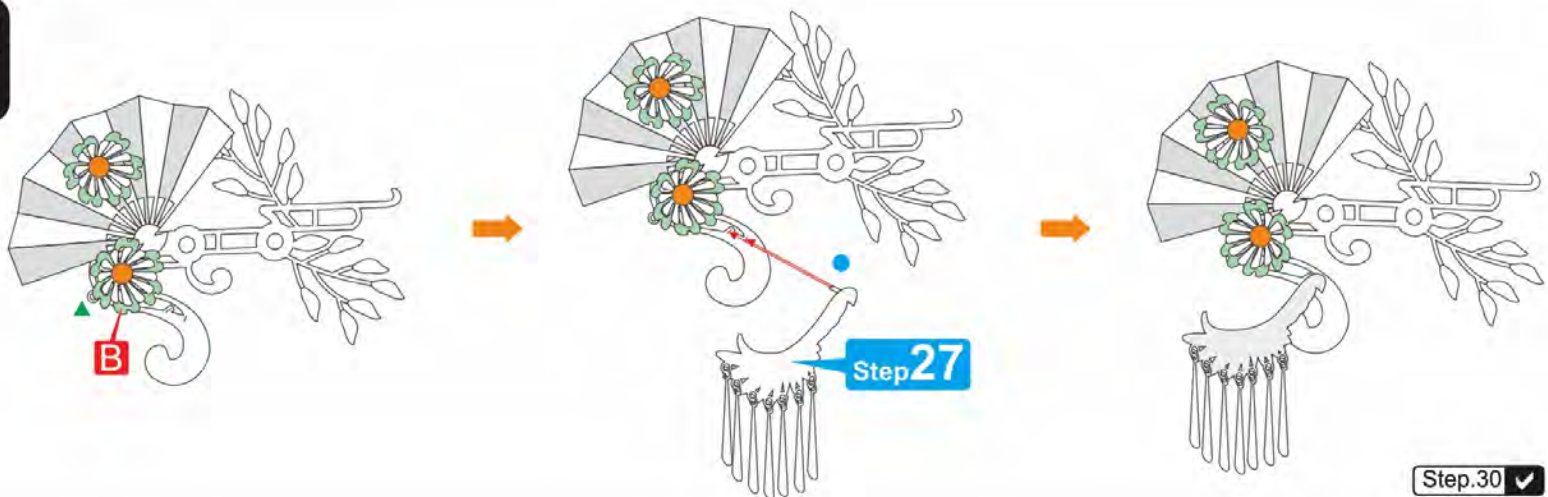
Step
28



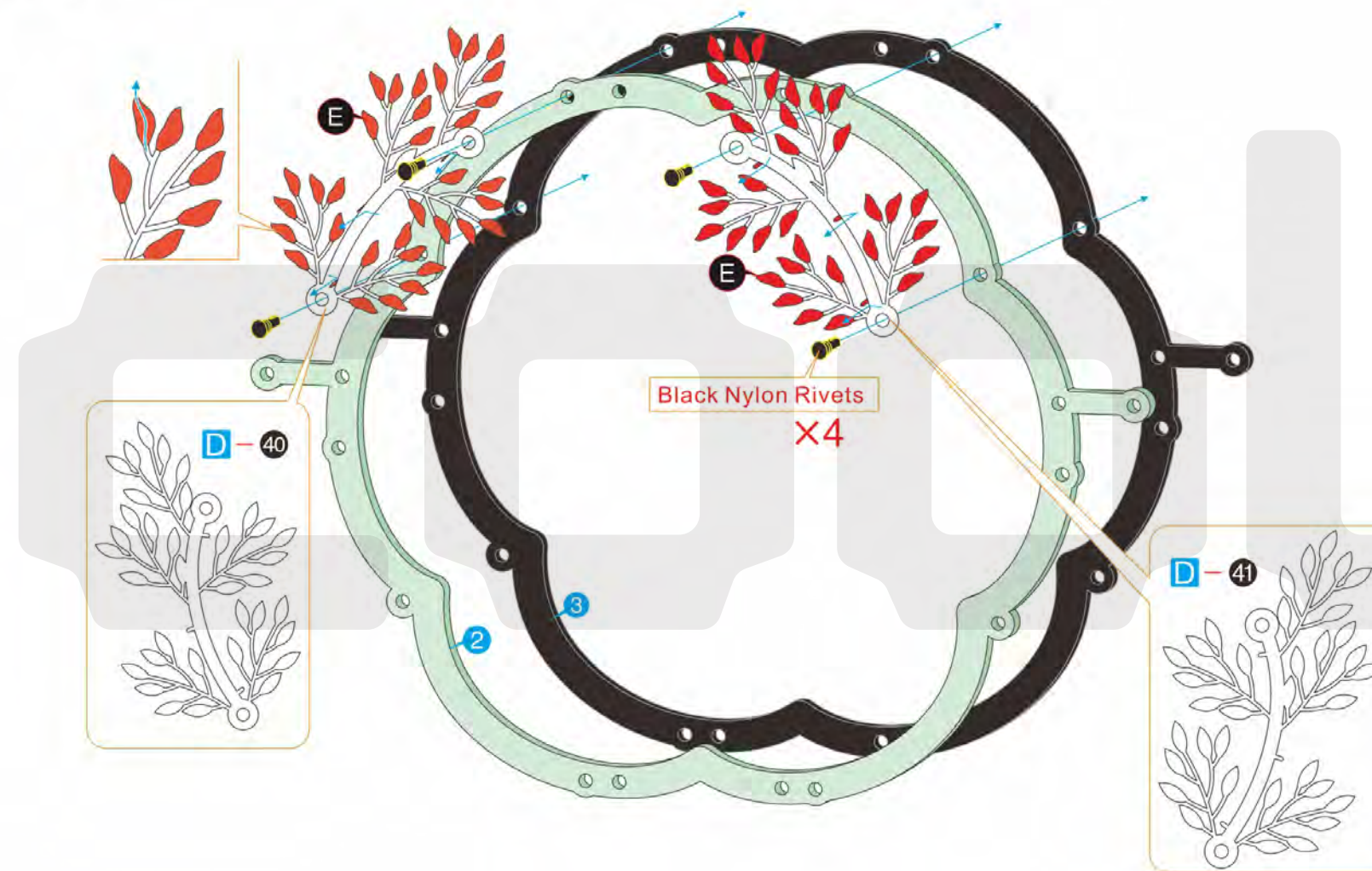
Step
29



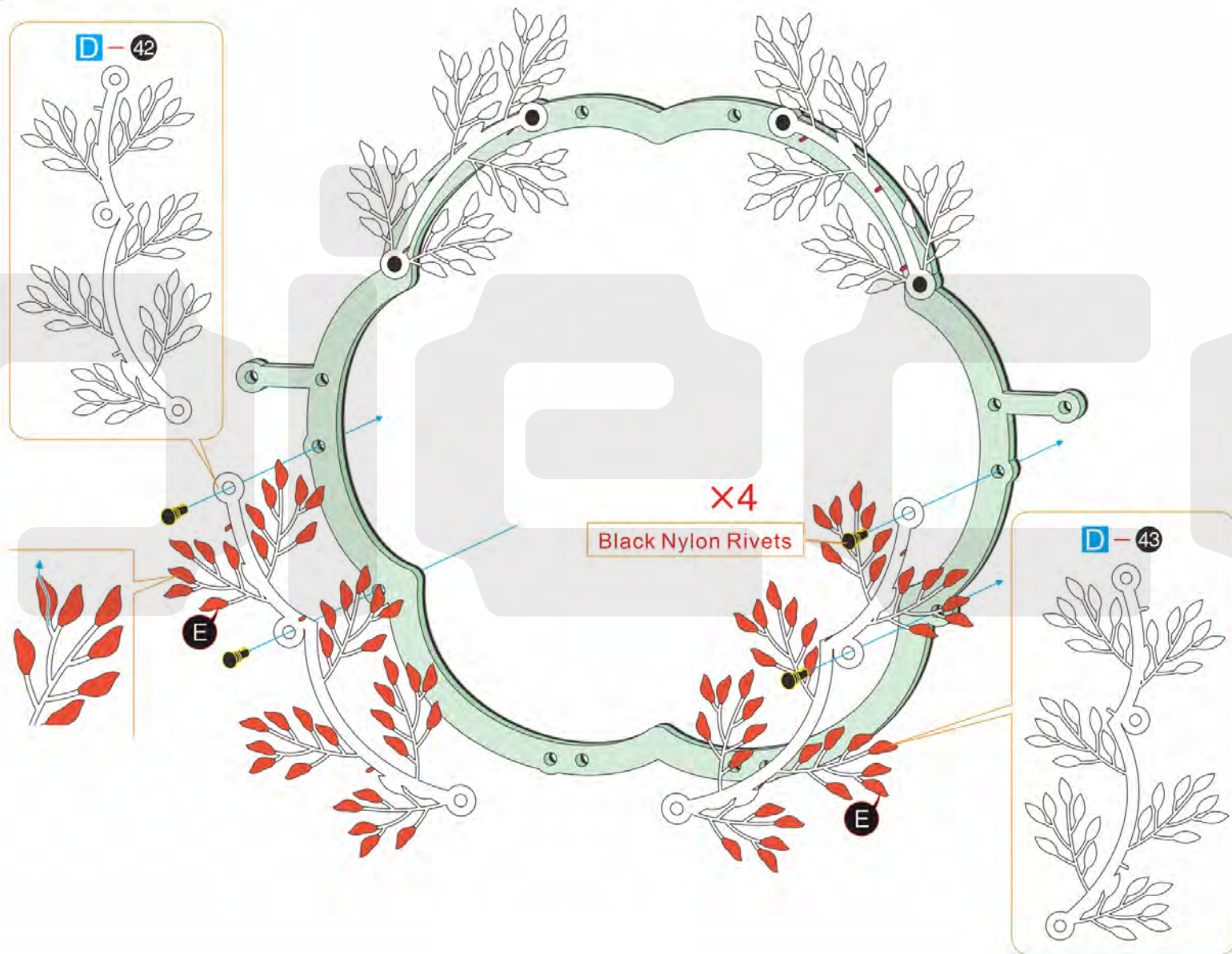
Step
30



Step
31

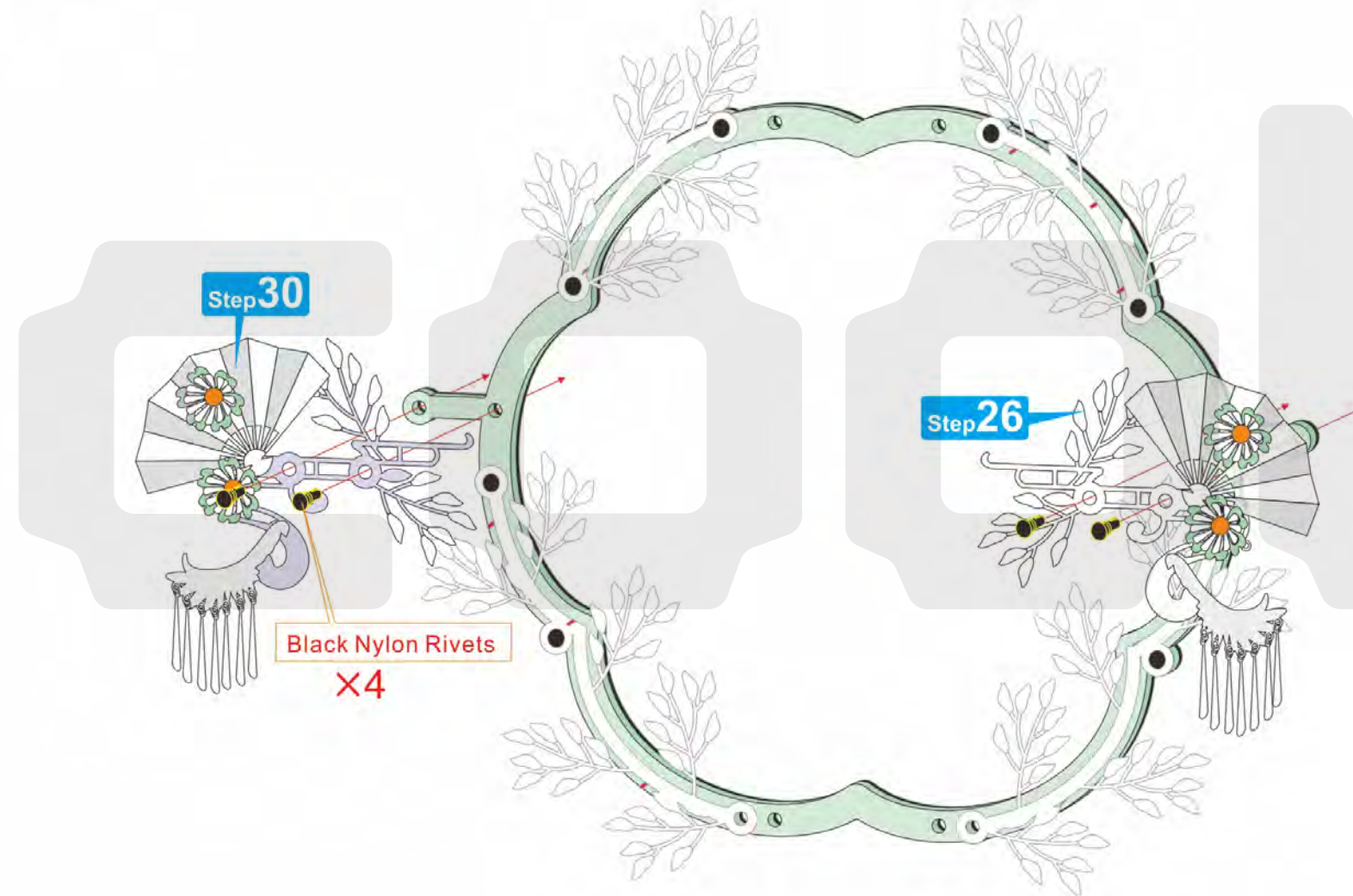


Step
32



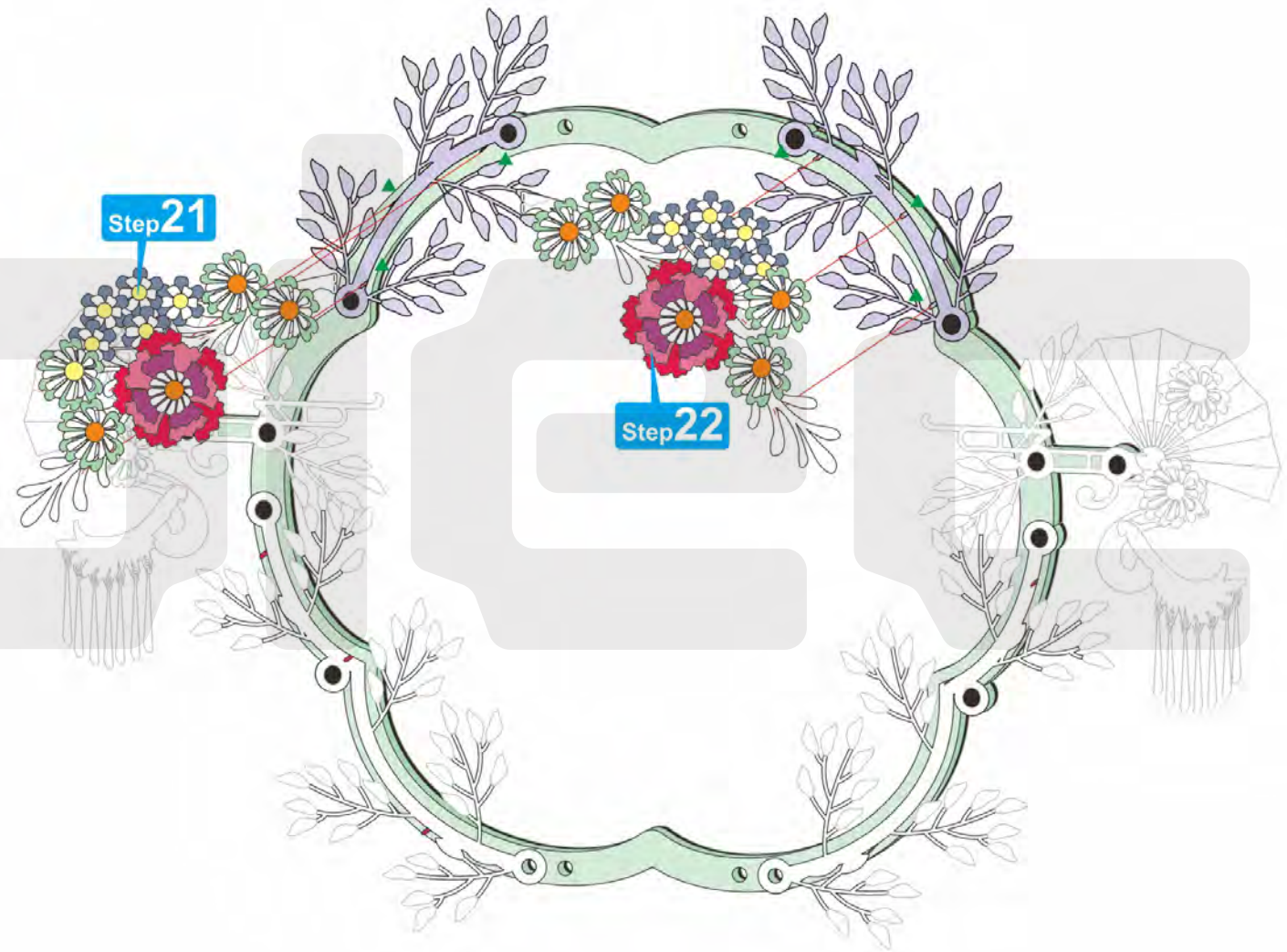
Step.32 ✓

Step
33



Step.33 ✓

Step
34



Step.34 ✓

Step
35



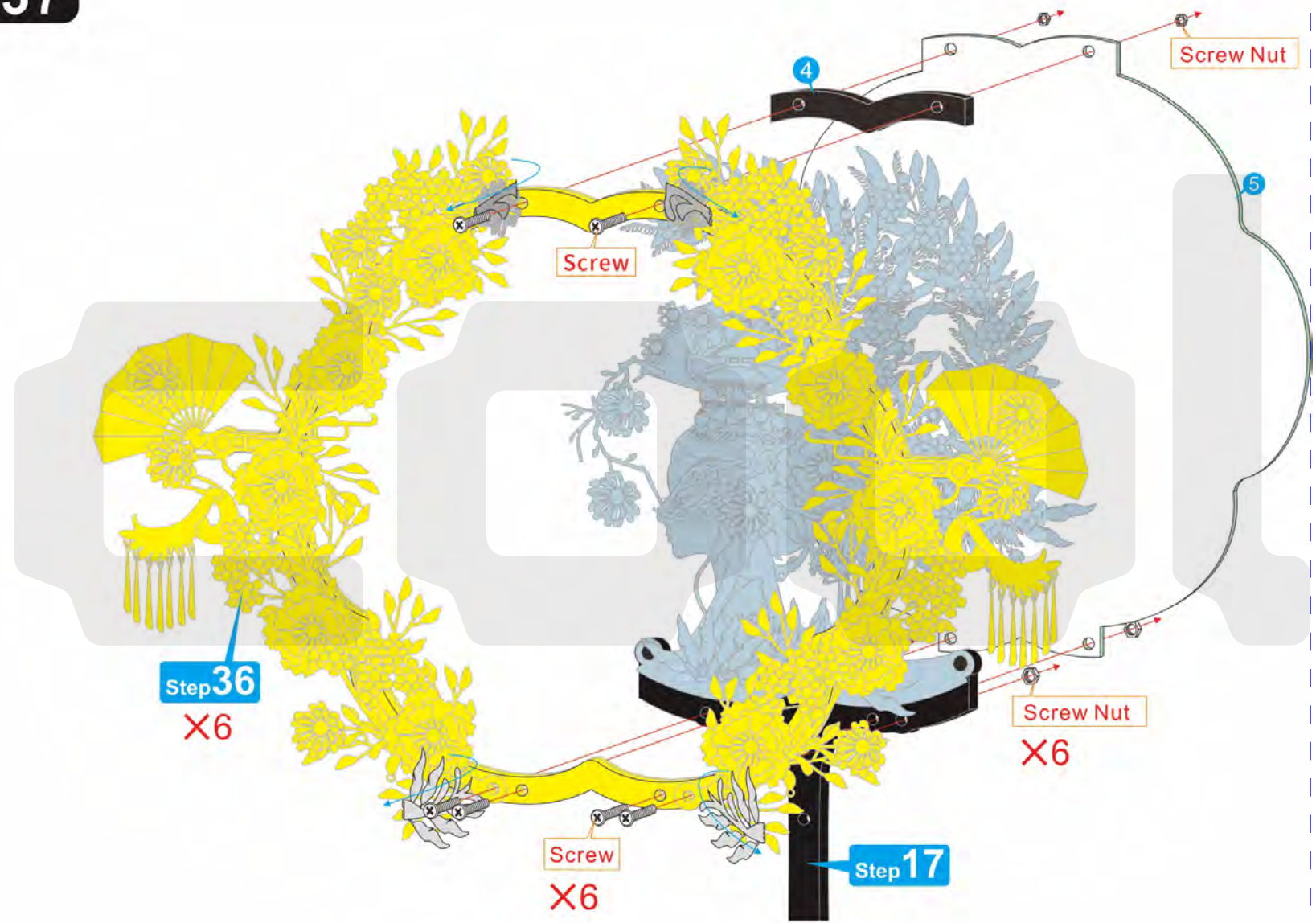
Step.35 ✓

Step
36



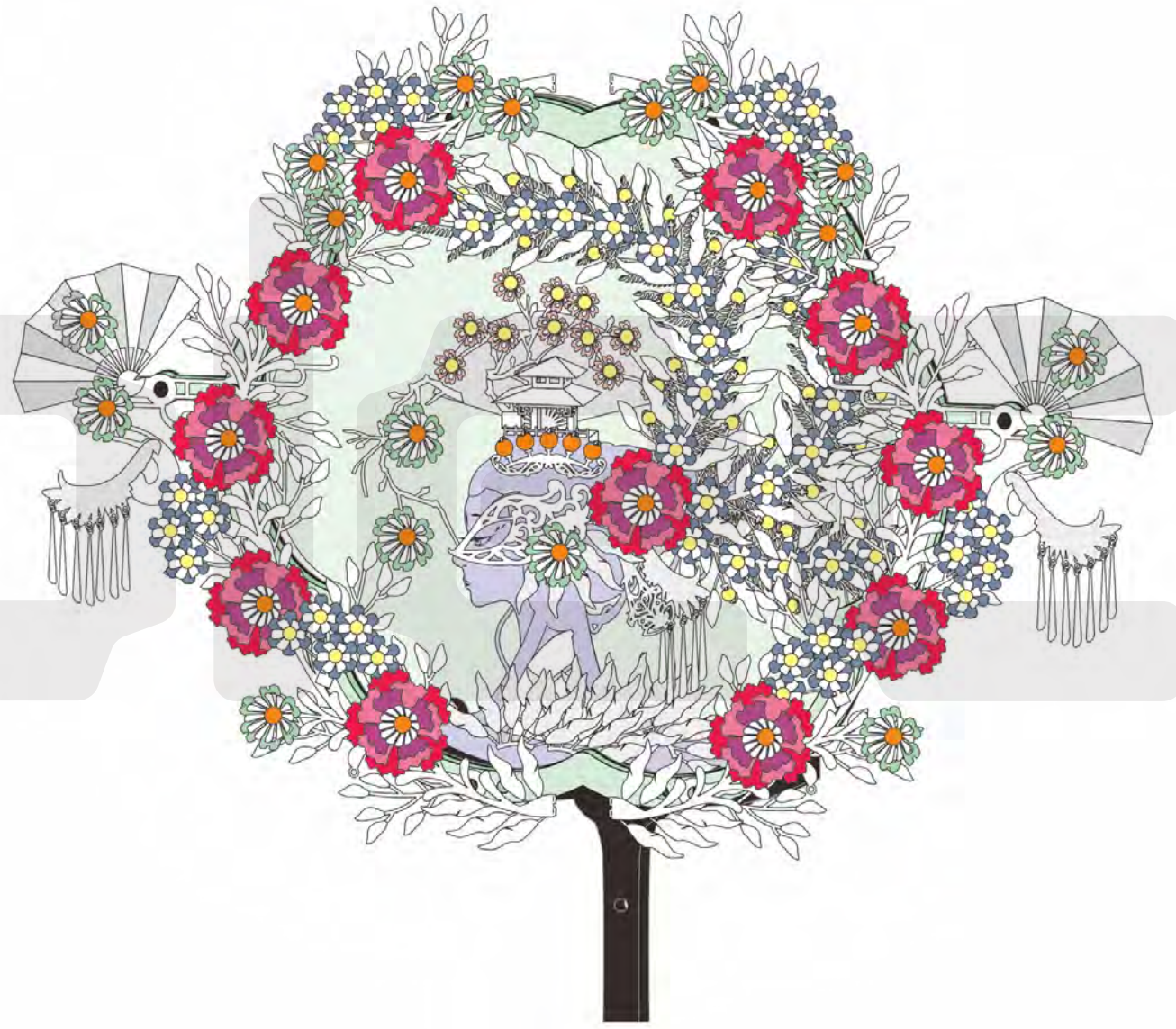
Step.36 ✓

Step
37



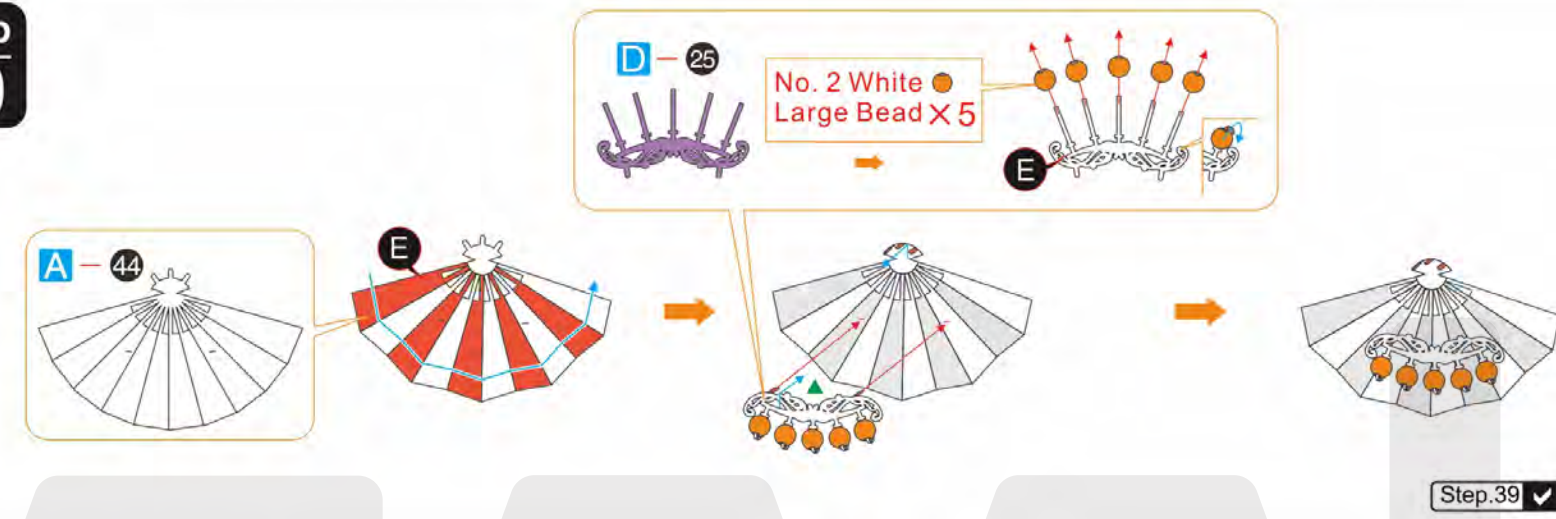
Step.37 ✓

Step 38



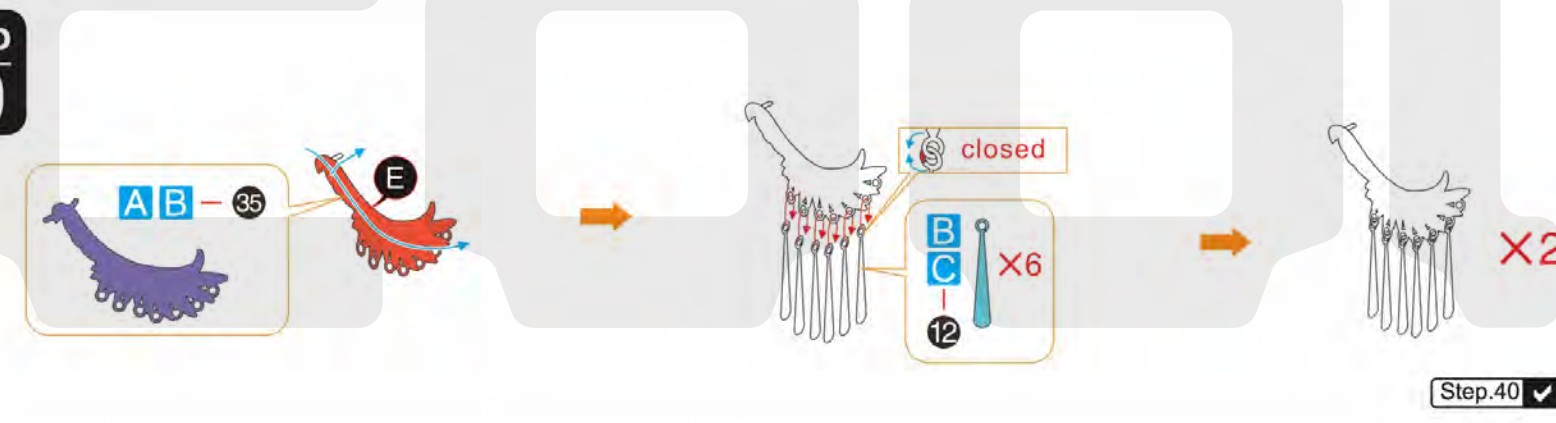
Step.38 ✓

Step 39



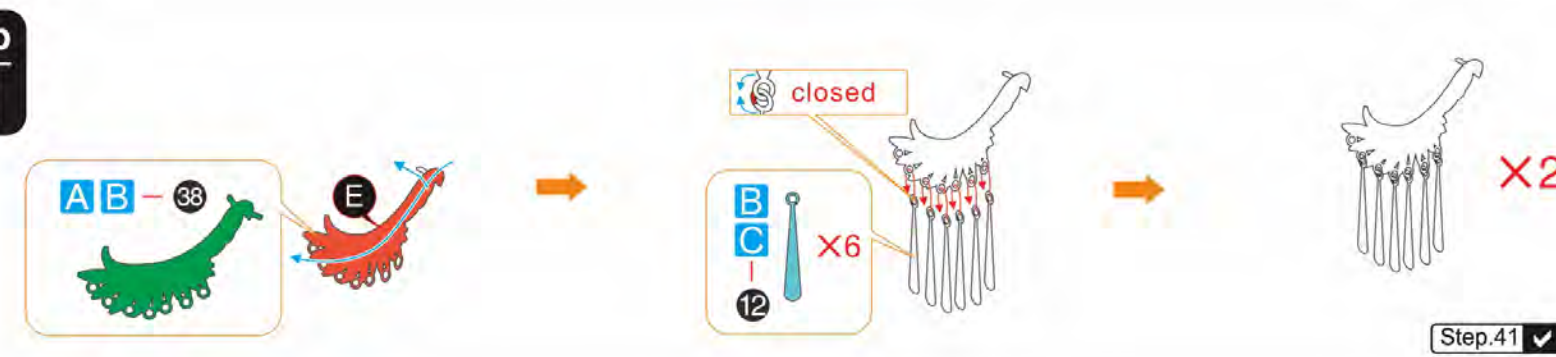
Step.39 ✓

Step 40



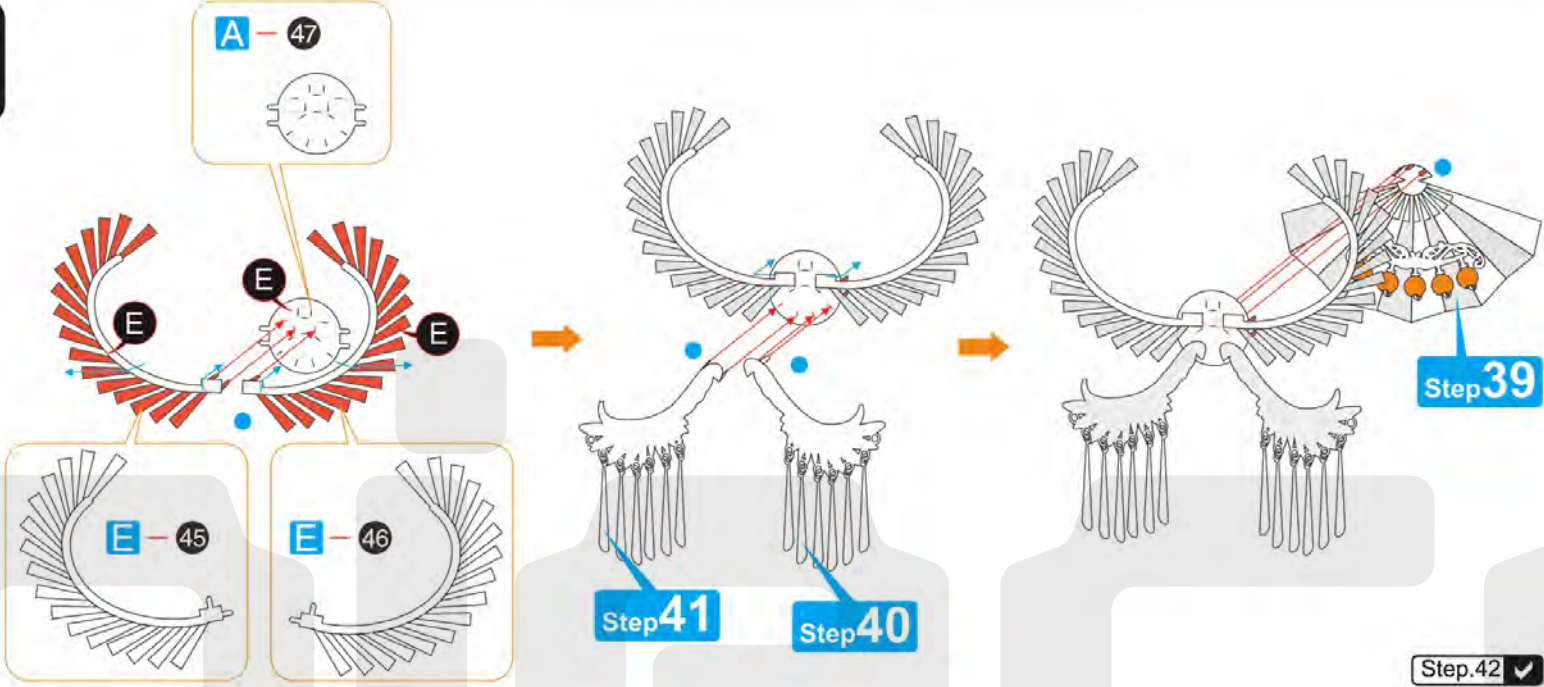
Step.40 ✓

Step 41

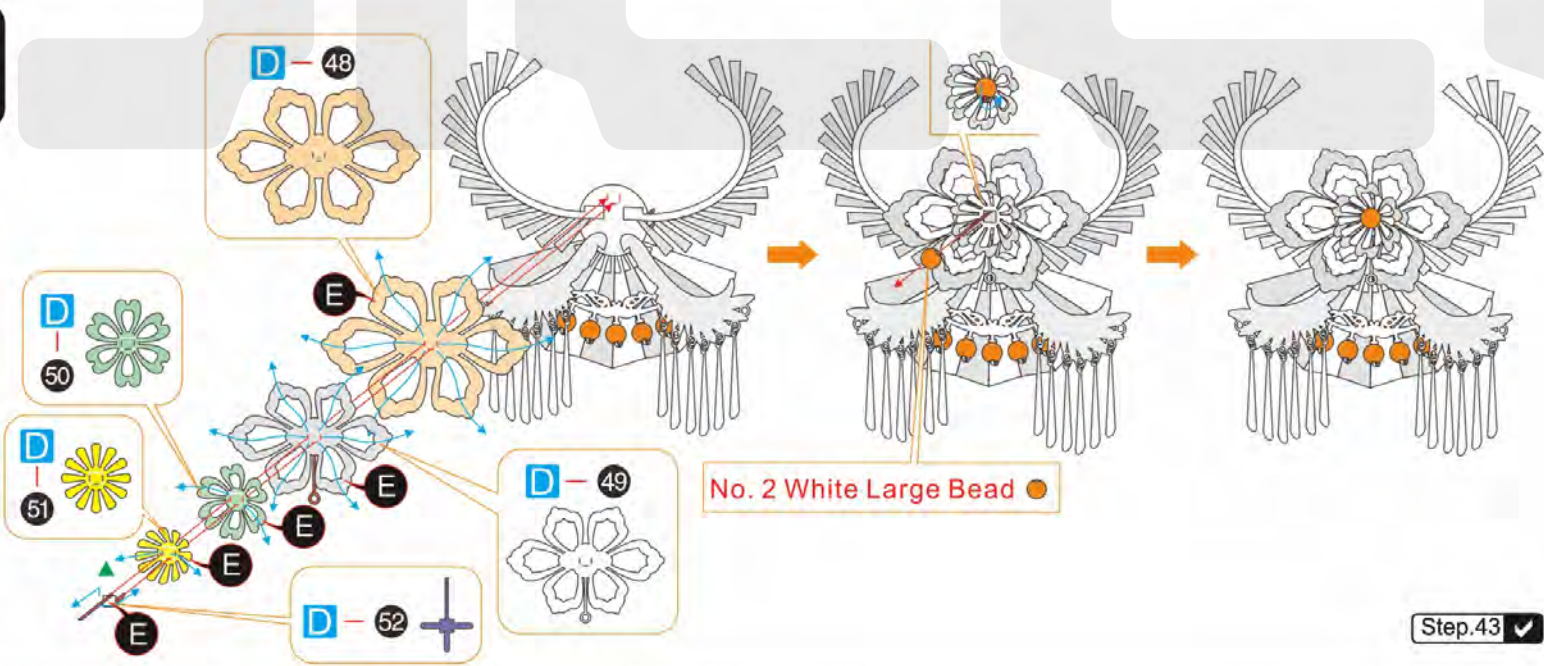


Step.41 ✓

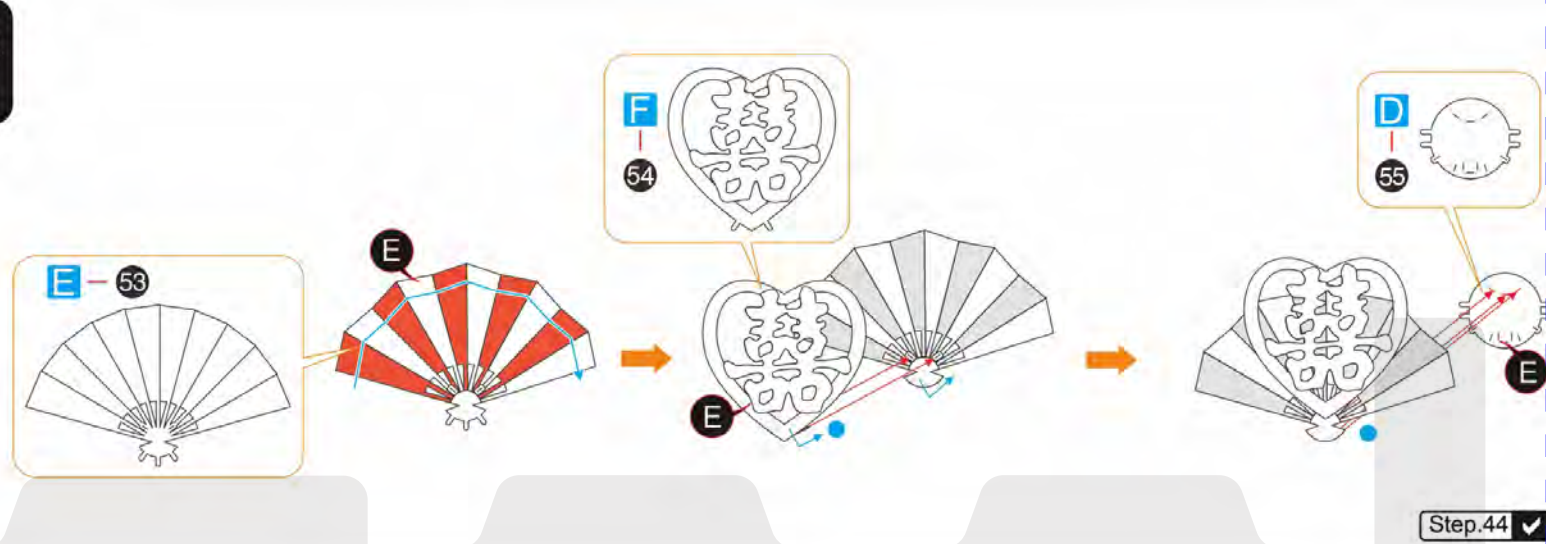
Step 42



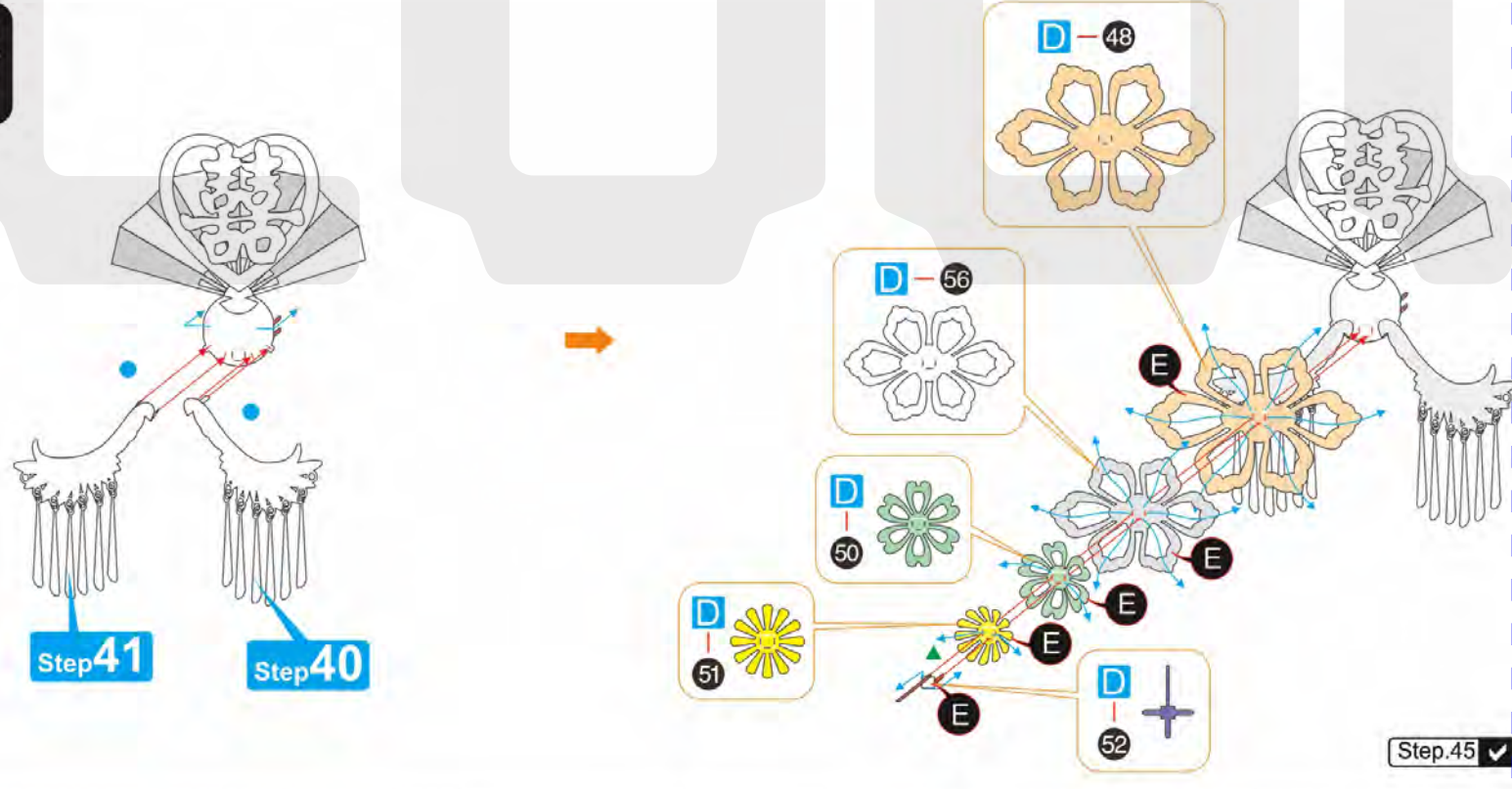
Step 43



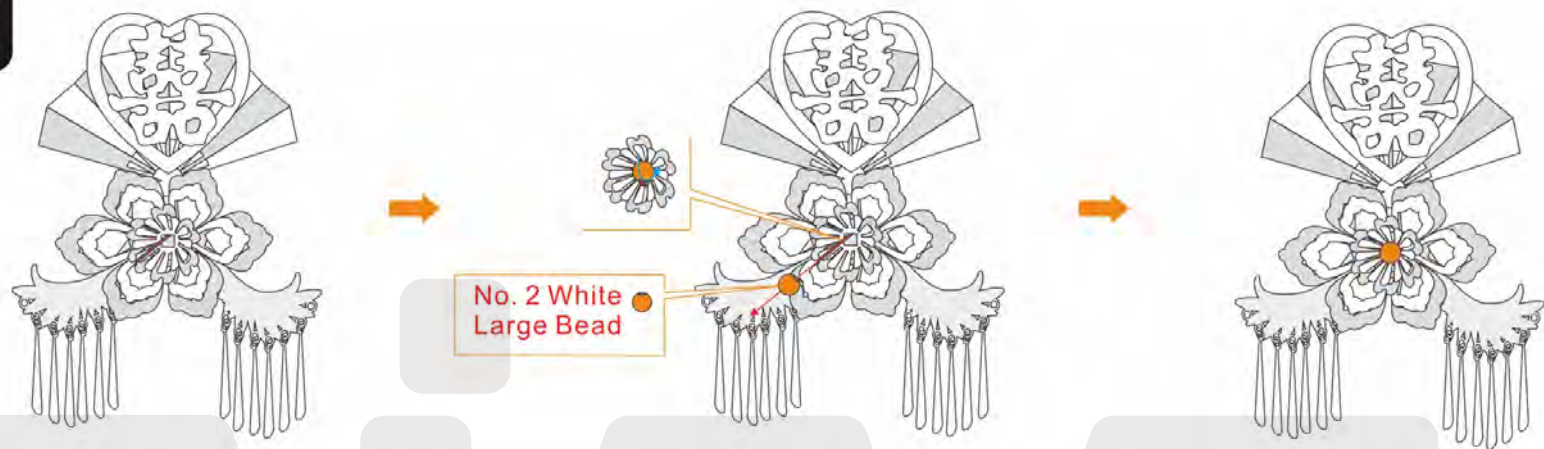
Step 44



Step 45

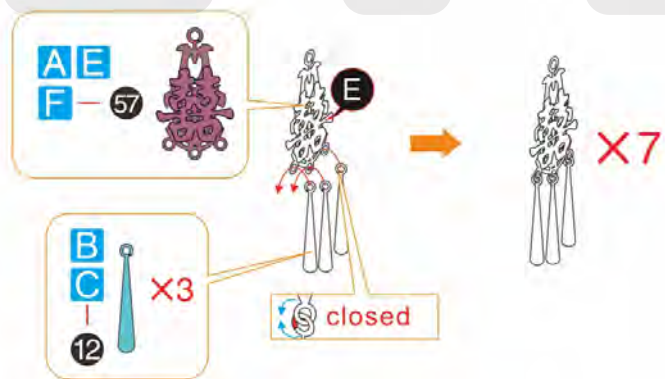


Step
46



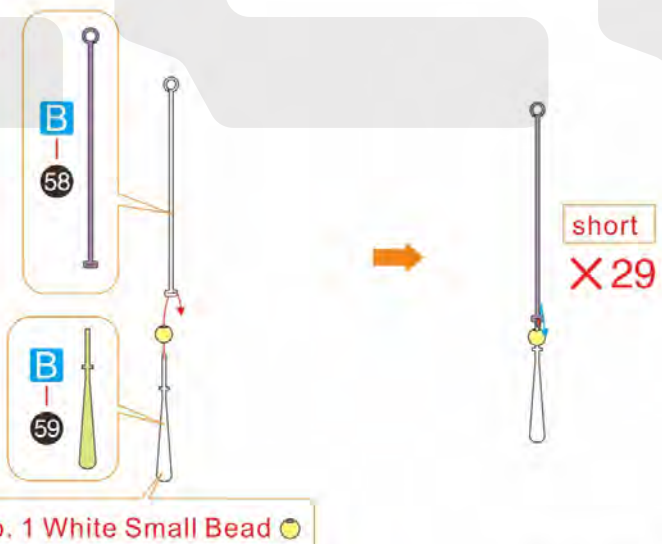
Step.46 ✓

Step
47



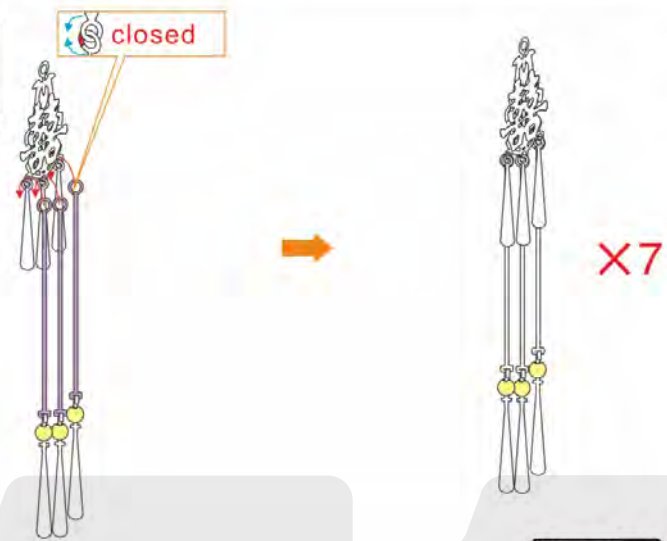
Step.47 ✓

Step
48



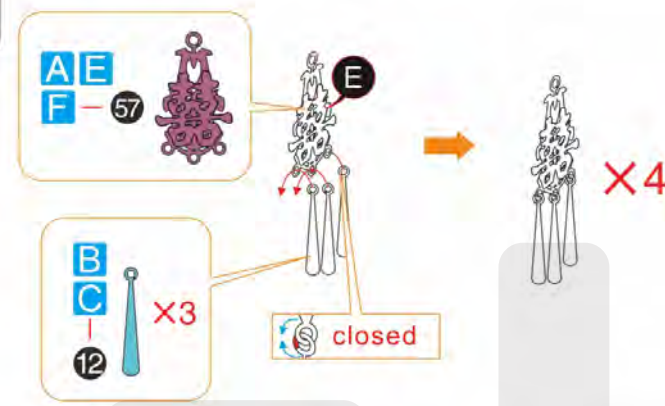
Step.48 ✓

Step
49



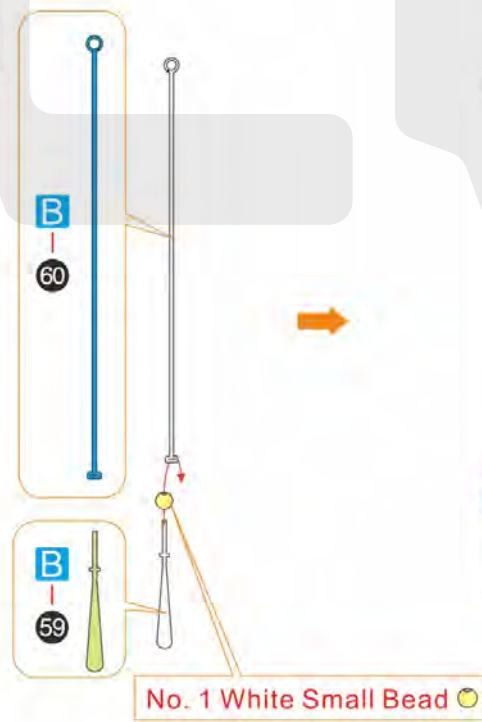
Step.49 ✓

Step
50



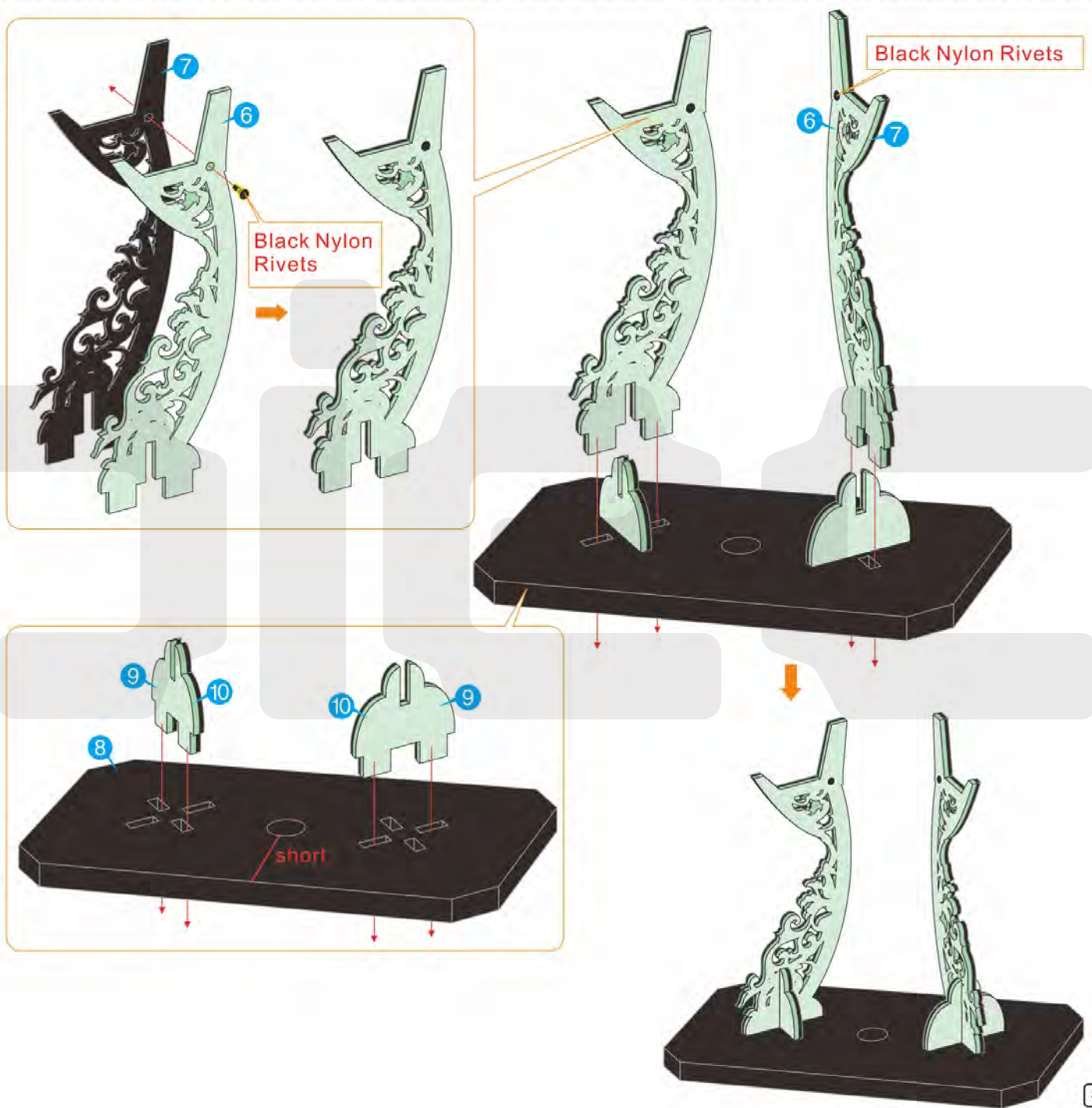
Step.50 ✓

Step
51



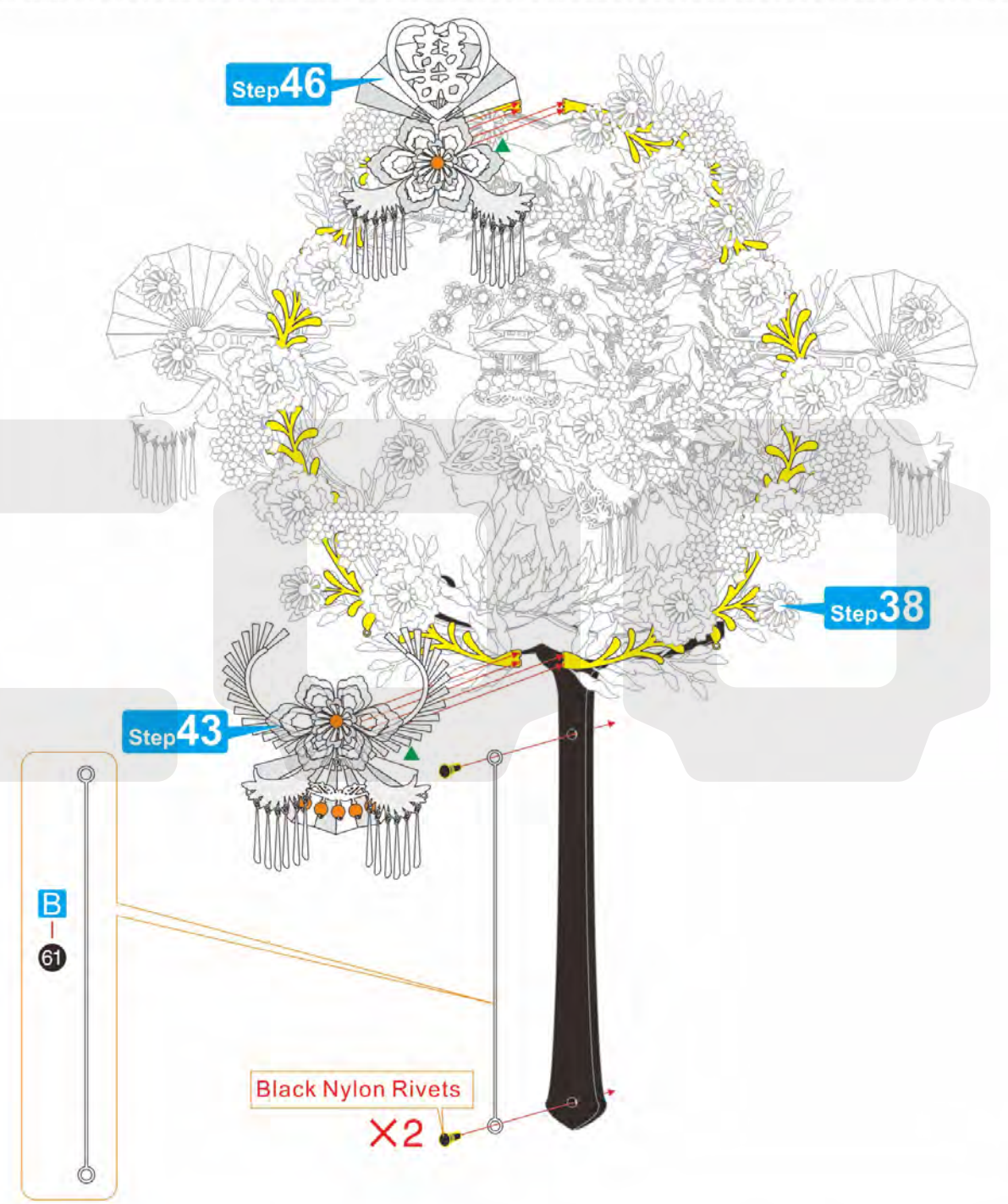
Step.51 ✓

Step 52



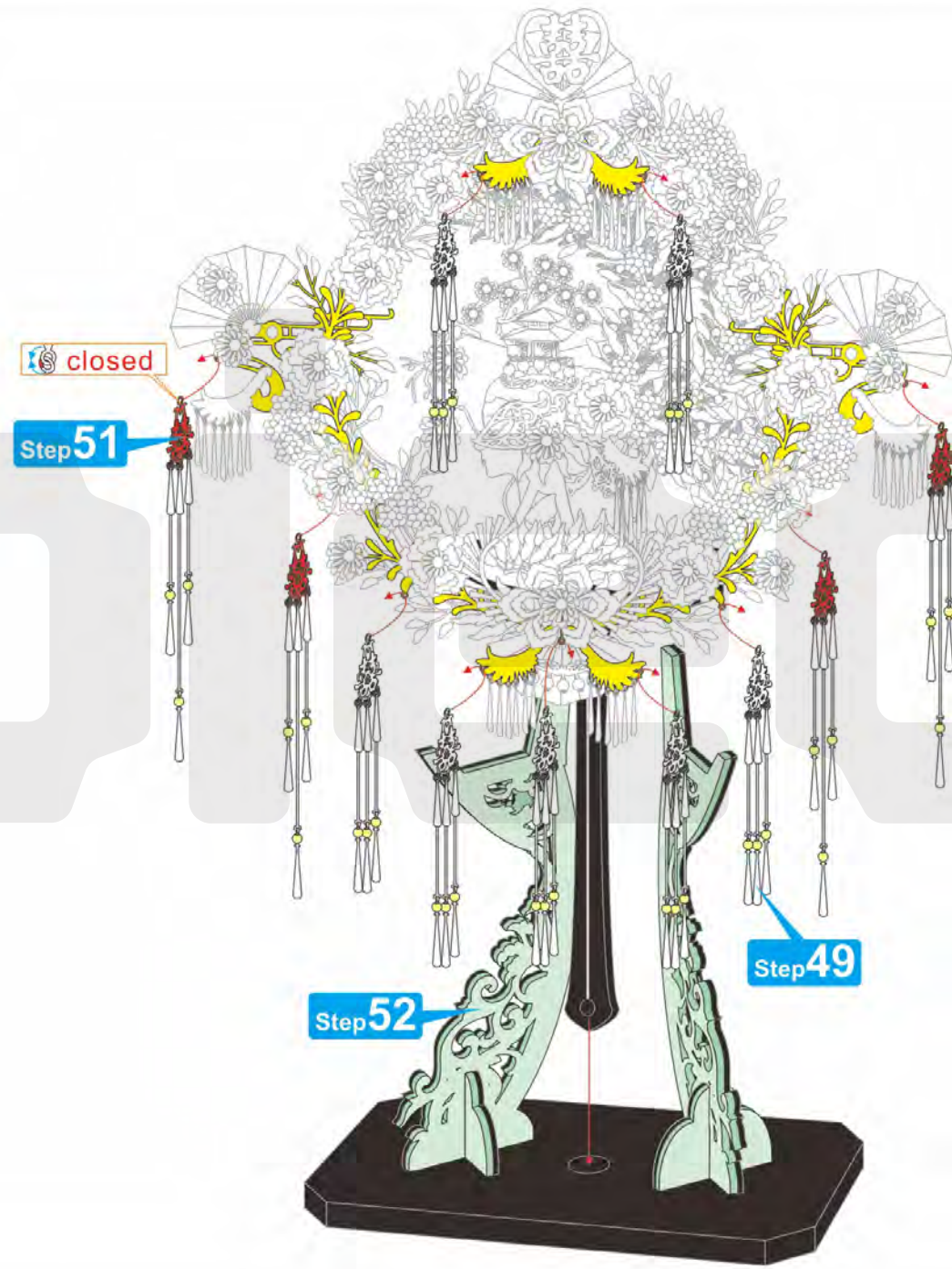
Step.52 ✓

Step 53



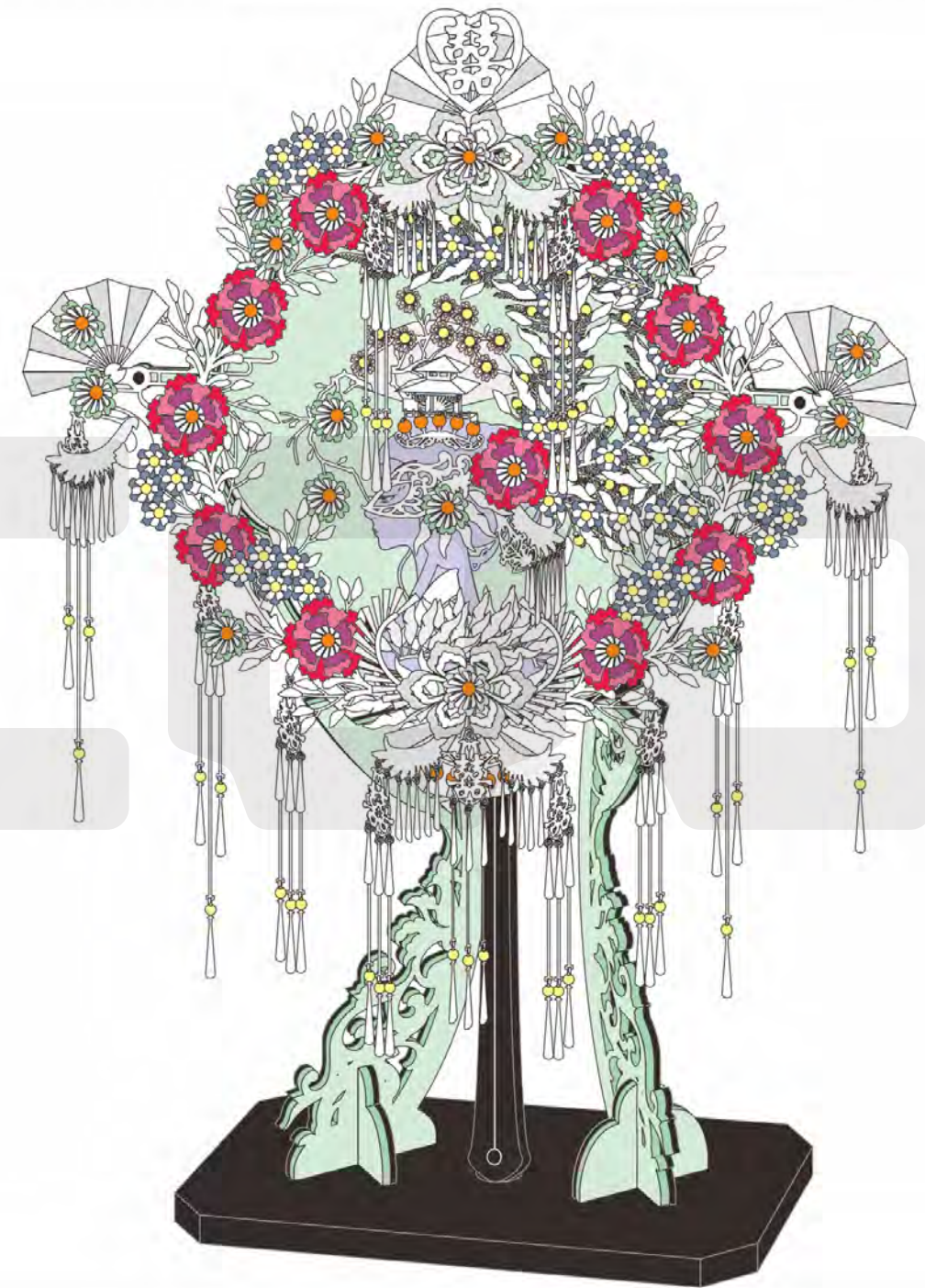
Step.53 ✓

Step 54



Step.54 ✓

Step 55



Step.55 ✓

© 2022 Wist Plastic & Metal Technology Limited.

CP-ASSY-HP196 -A1-20210727