

KMB

VOLVO B8L WRIGHT 12M

(1:87 SCALE COLLECTABLES)

Assembled model size

L13.2 × W3.5 × H4.5 cm

DESIGN
1933

piececool

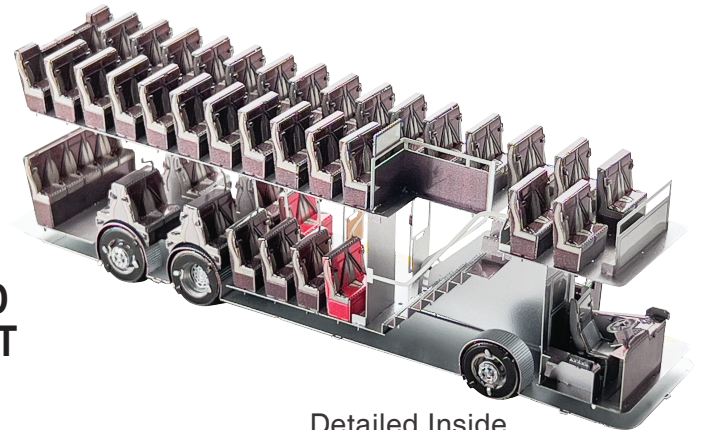
© 2022 Wist Plastic & Metal Technology Limited. All rights reserved.

富豪B8L (Volvo B8L) 為瑞典富豪車廠 (Volvo) 出產的一款低地台三軸雙層巴士底盤。2017年亮相的B8L型號，乃廣為香港各巴士公司採用的富豪B9TL之後繼車型。

九巴擁有全球首部生產的富豪B8L，該車同時是全港首部符合歐盟六型排放標準的傳統動力雙層巴士。

Regal B8L (Volvo B8L) Sweden Regal depot (Volvo) produced a low-floor three-axis double-decker bus chassis. The B8L model unveiled in 2017 is the successor model of the Regal B9TL widely adopted by various bus companies in Hong Kong.

KMB owns the world's first Volvo B8L, which is the first traditionally powered double-decker bus in Hong Kong that meets the Euro VI emission standards.



Detailed Inside

HIGHLY DETAILED METAL MODEL KIT

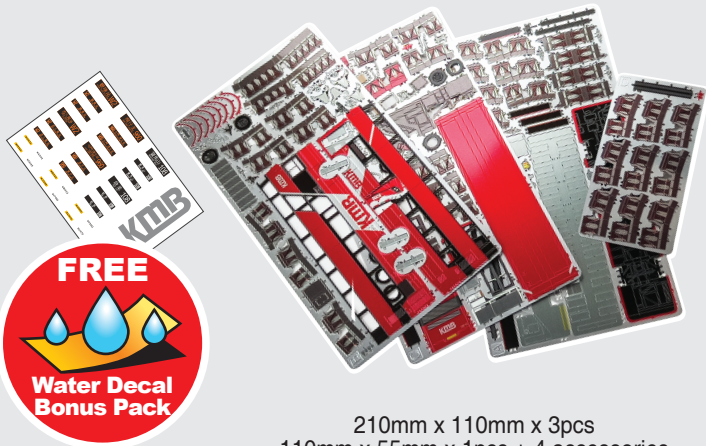
LEVEL 3 DIFFICULTY



Product Information:

Item name : VOLVO B8L WRIGHT 12M
Item number : DZ015-RS
Material : 430 Steel
Model size : L13.2cm x W3.5cm x H4.5cm
Suitable age : 14 years+
Assembly method : refer to the instructions for detail

What's included



210mm x 110mm x 3pcs
110mm x 55mm x 1pcs + 4 accessories

Assembly Tips



NO GLUE



NO SOLDER



NO PAINT

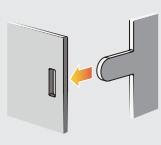


DISPLAY BOX

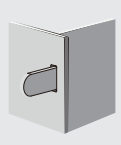
HZ-05 5#



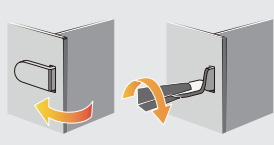
TRIM



ALIGN

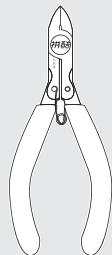


INSERT



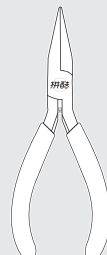
BEND / TWIST

(1) Prepare tools



Clipper

Remove parts from sheets.
水口鉗工具
修剪金屬片板件上的零件
水口位



Needle nose pliers

Fold parts to assemble the model.
尖嘴鉗工具
彎折金屬零件上的折疊線和扣點

⚠ Caution

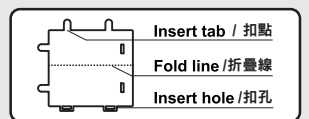
組裝時請小心處理金屬零件，以免劃傷。
Please handle metal sheets with care.
The parts may have sharp edges that could cut or scratch skin. Keep away from children.

(2) Remove the parts



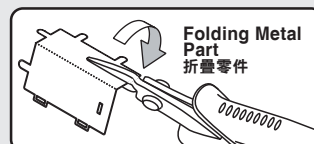
Please use the clipper to cut the nozzle position and remove the parts.
使用水口鉗剪斷金屬零件上的水口，將需要的金屬零件從金屬片板件取下

(3) Identify the parts



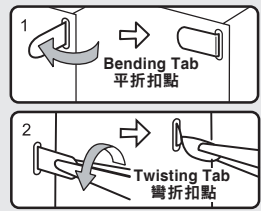
Identify the insert tab, fold line and the insert hole.
識別金屬零件上的扣點，折疊線，扣孔的樣子

(4) Folding the parts



Please use the needle nose pliers to fold the cut parts into models.
使用尖嘴鉗，參照拼裝說明書將金屬零件折成形狀

(5) Retaining the parts



Insert tab into the hole, and bend the tab to 90°
插入扣孔，平折90°

Insert tab into the hole, and gently twist the tab 90°
插入扣孔，旋轉90°

(6) Attention

- E** Engraved / Color side
顏色面 / 紋理面
- NE** Non-engraved / Plain side
非顏色面 / 非紋理面
- !** Attention Point
注意片對稱
- Keep the parts symmetrical
注意細節

When cutting metal parts, please do not cut the "insert tab" as "nozzle position". Only cut the parts of the current step when cutting the parts. Do not cut all the parts at one time to avoid loss.

When encountering the parts of the folding line, please pay attention to the front and back of the metal sheet and the direction of the folding. According to the direction indicated in the instruction, cut lightly and fold slowly. It is best to fold it once. Do not fold it repeatedly to avoid damage to the parts.

剪金屬零件時請剪零件“水口位”，請勿將“扣點”當成“水口位”剪下，每次剪零件時請僅剪當前步驟的零件，切勿一次性將所有零件剪下，避免丟失；

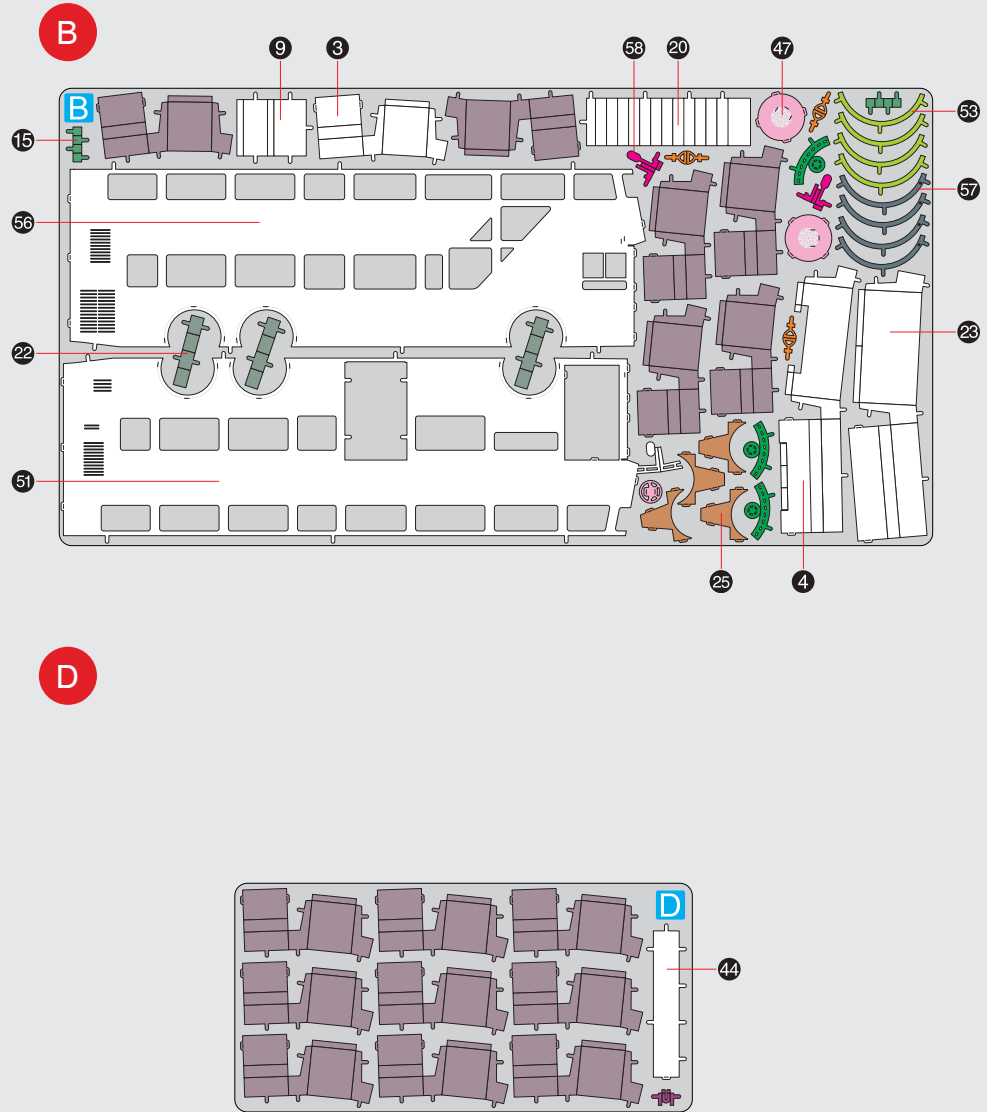
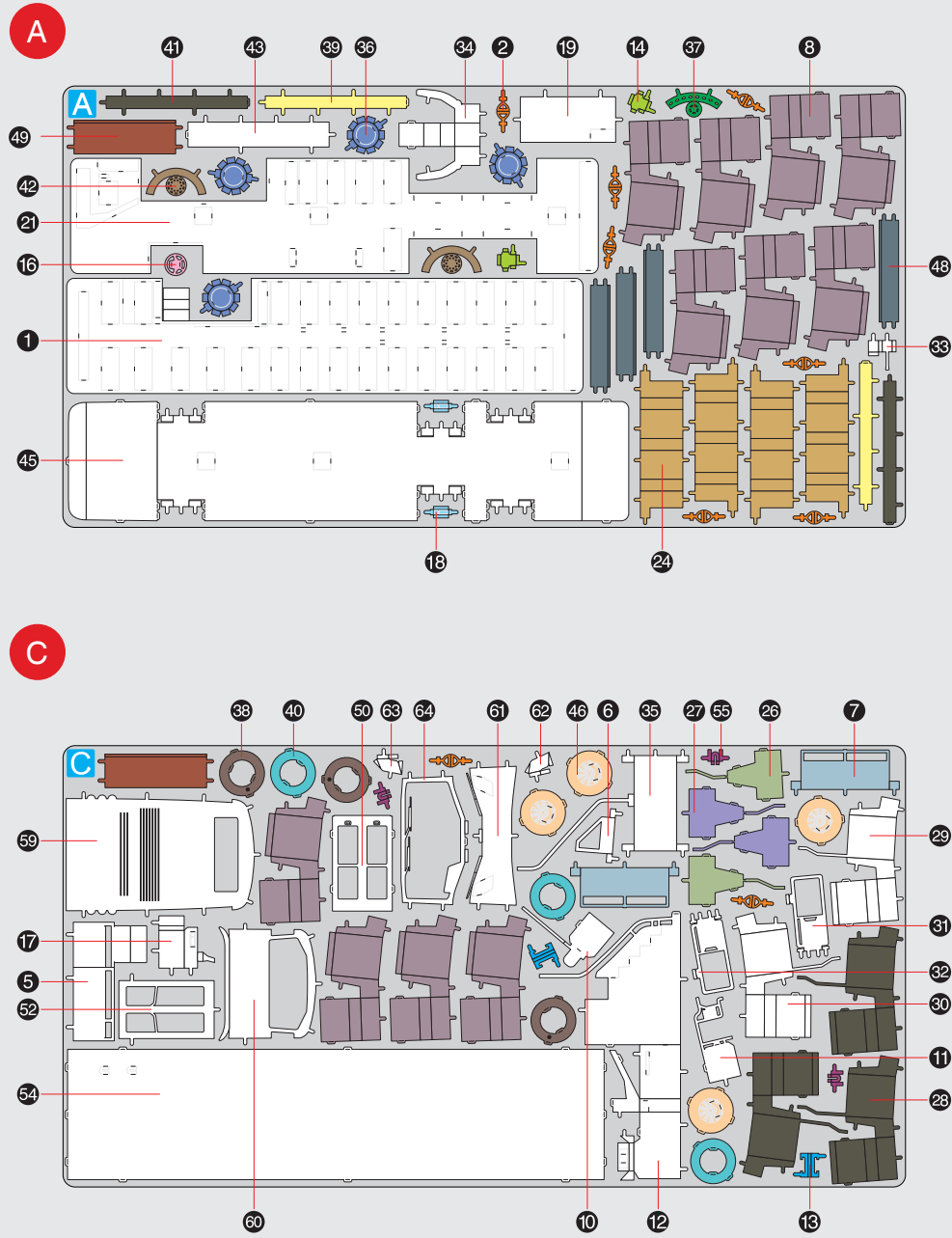
當遇到折疊線的零件，請注意金屬片的正反面及拼折方向，請按照說明書的方向，輕剪慢折，最好一次性折疊完成，請勿反覆折疊，避免零件損壞。



NO GLUE

No need to use glue. Recommend using piececool tool (cutters and needle-nose plier).
Save time and enjoy a more pleasurable assembly experience. Finished model is more refined and attractive.
不需使用膠水。建議使用拼酷正品拼裝工具(水口鉗、尖嘴鉗)，拼裝時更省力，拼裝後作品更精細、美觀！

Parts Identification

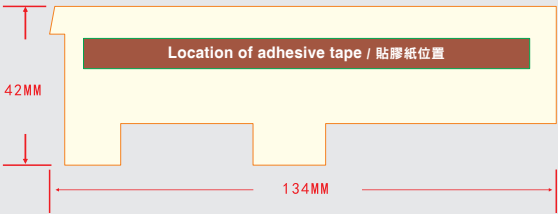


Parts Package

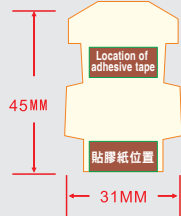
Left-sided transparent plastic sheet / 左側透明膠片
(adhesive tape length 83+11=94mm, width 8 mm /
膠紙 長83+11=94mm, 寬8mm)



Right-sided transparent plastic sheet / 右側透明膠片
(adhesive tape length 118mm, width 8mm /
膠紙 長118mm, 寬8mm)

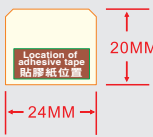


Bus Front transparent plastic sheet
/ 車頭透明膠片



(adhesive tape x2 length 18mm, width 8mm /
膠紙x2 長18mm, 寬8mm)

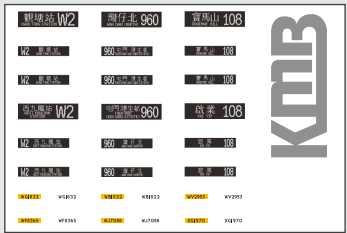
Bus Rear transparent plastic sheet
/ 車尾透明膠片



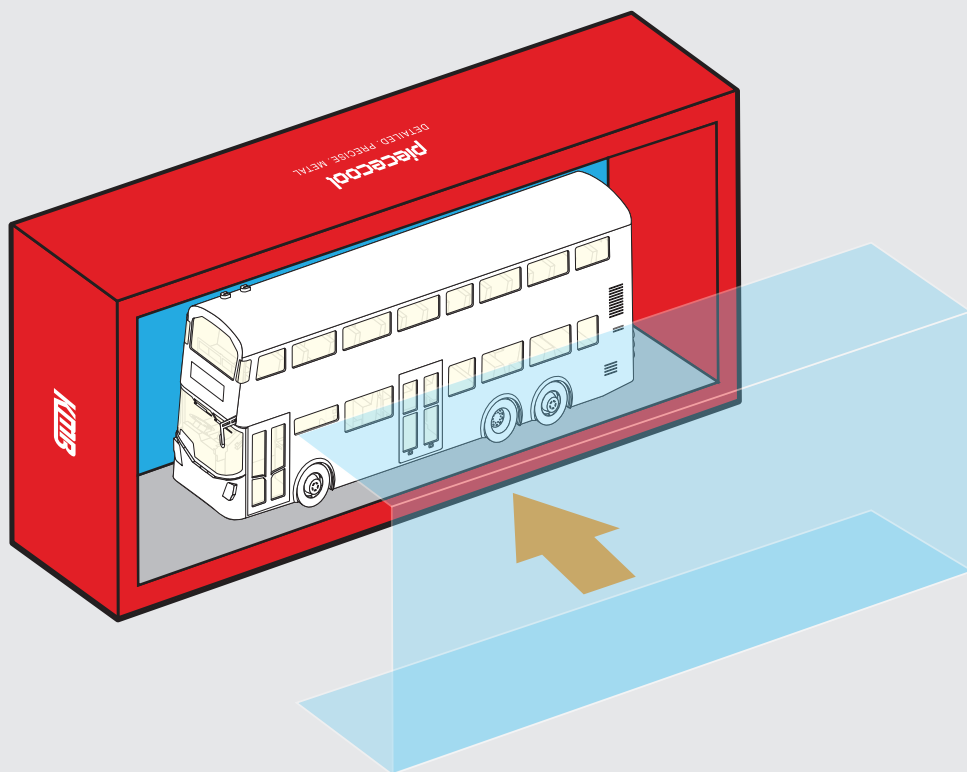
(adhesive tape length 20mm, width 8mm /
膠紙 長20mm, 寬8mm)

*Please remove the protective film during assembly.
*組裝時請撕掉保護膜。

Water Decal / 水印貼紙



Display



*The film can be removed after final assembly,
before putting the model in the display box
*最終組裝後，將模型放入展示盒之前，可以將
保護膜取下

WIST
www.wist.build

Manufacturer: Dongguan Weishi Culture Technology Co., Ltd.
Address: No.2, Cunkou street, Xiangxi Village, Liaobu Town,
Dongguan City, Guangdong province, P.R.C.
E-mail: info@piececool.world
www.piececool.world
Made in China
© 2022 Wist Plastic & Metal Technology Limited. All rights reserved.

